

Technical Datasheet

GK5707XSLF H CLIP COUPLER

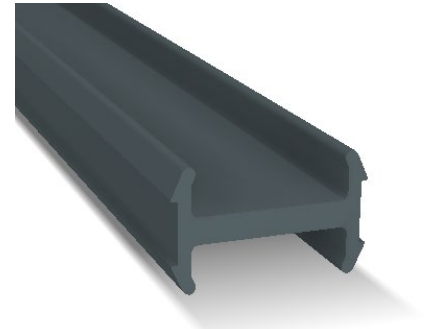
We have developed a clip in H Clip Coupler GK5707XSLF. The GK5707XSLF simplifies the coupling of profiles using a clip design that holds it in place. The PVC profile can be clipped or cut to length.

This product is compatible with 14mm fixing grooves and will supersede the CS920 inline H coupler.

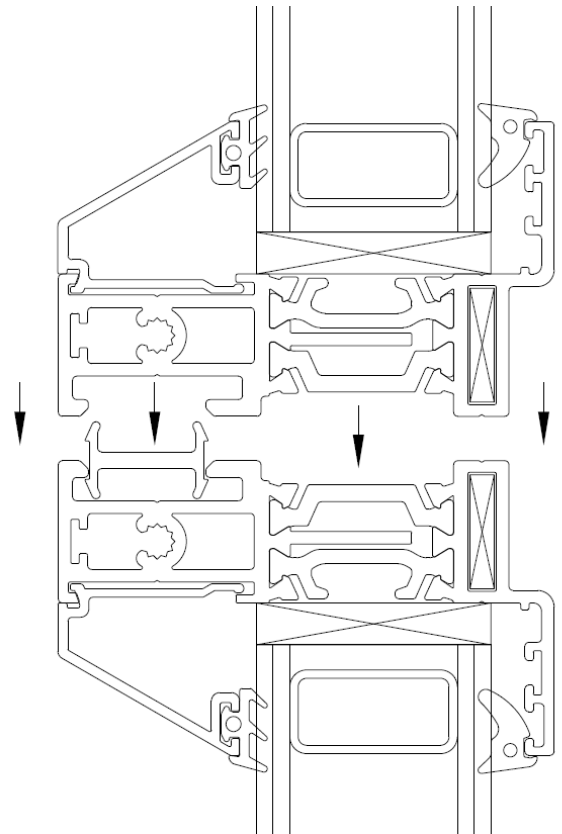
To install the GK5707XSLF H Clip Coupler ensure it is push fitted into the profile groove. Do not apply excessive force or strike with hammer or mallet. After clipping coupler into groove screw fix profiles together using suitable fasteners typically at pitches of every 400mm.

Sealant to be applied between coupled profiles, ensure drainage paths are considered.

Reference technical manuals for fixing details, locations, sealant and drainage paths.



GK5707XSLF



The following products are now obsolete:

CS920AMIL - INLINE H COUPLER

Further details available from Technical Dept.
technical@parksidegrp.co.uk

Profiles being coupled with GK5707XSLF