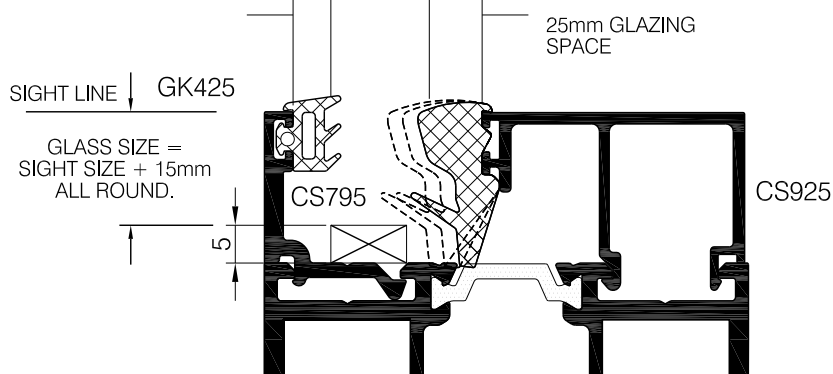


CAPTIVE GASKET ref.	GASKET VALUE M/M	MAX M/M			WEDGE VALUE M/M	WEDGE INSERT ref.
GK425	5	14	13		5 - 7	GK906
GK425	5	13	12	11	7 - 9	GK908
GK425	5	11	10	9	9 - 11	GK910
		MIN M/M				

OUTSIDE

INSIDE



DOUBLE GLAZED DOOR SYSTEM
WITH SQUARE BEAD.

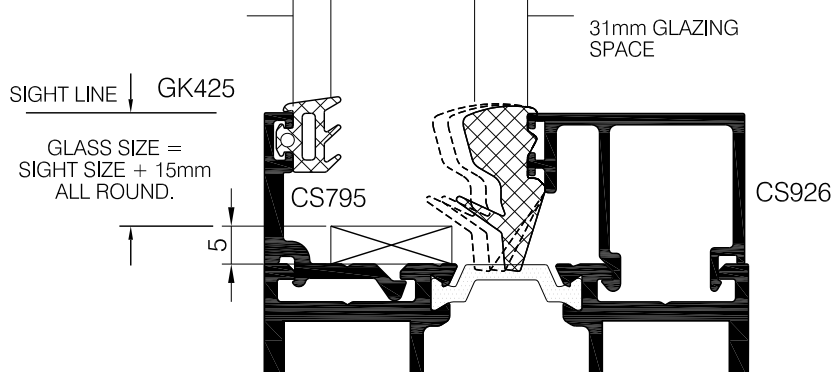
ORDER OF ASSEMBLY:-

1. BEAD CS795.
2. CAPTIVE GASKET.
3. GLASS OR PANEL.
4. CS925-926 SQUARE BEAD.
5. INSERT WEDGE GASKET.

CAPTIVE GASKET ref.	GASKET VALUE M/M	MAX M/M			WEDGE VALUE M/M	WEDGE INSERT ref.
GK425	5	20	19		5 - 7	GK906
GK425	5	19	18	17	7 - 9	GK908
GK425	5	17	16	15	9 - 11	GK910
		MIN M/M				

OUTSIDE

INSIDE



TO ENSURE SATISFACTORY
PRODUCT PERFORMANCE,
BOTTOM CORNERS AND
INTERNAL GASKET CORNER
JOINTS SHOULD BE
SILICONE SEALED.

IMPORTANT NOTE

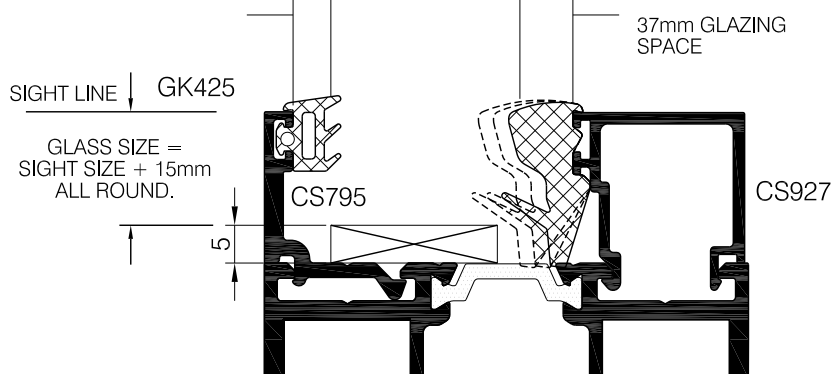
DUE TO PRODUCTION TOLERANCES IN
ALUMINIUM, PAINTING/ANODISING,
GLASS AND GASKETS, CHECK AND
TRIAL ABOVE FORMULAE BEFORE
PROCEEDING WITH BULK PRODUCTION.



CAPTIVE GASKET ref.	GASKET VALUE M/M	MAX M/M			WEDGE VALUE M/M	WEDGE INSERT ref.
GK425	5	26	25		5 - 7	GK906
GK425	5	25	24	23	7 - 9	GK908
GK425	5	23	22	21	9 - 11	GK910
		MIN M/M				

OUTSIDE

INSIDE



DOUBLE GLAZED DOOR SYSTEM
 WITH SQUARE BEAD.

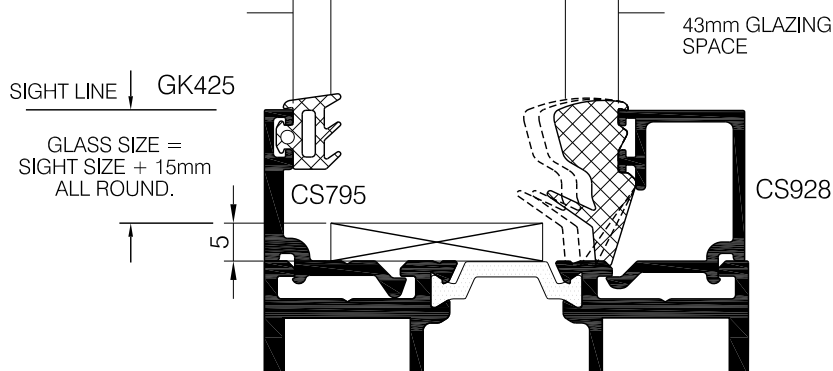
ORDER OF ASSEMBLY:-

1. BEAD CS795.
2. CAPTIVE GASKET.
3. GLASS OR PANEL.
4. CS927-928 SQUARE BEAD.
5. INSERT WEDGE GASKET.

CAPTIVE GASKET ref.	GASKET VALUE M/M	MAX M/M			WEDGE VALUE M/M	WEDGE INSERT ref.
GK425	5	32	31		5 - 7	GK906
GK425	5	31	30	29	7 - 9	GK908
GK425	5	29	28	27	9 - 11	GK910
		MIN M/M				

OUTSIDE

INSIDE



TO ENSURE SATISFACTORY
 PRODUCT PERFORMANCE,
 BOTTOM CORNERS AND
 INTERNAL GASKET CORNER
 JOINTS SHOULD BE
 SILICONE SEALED.

IMPORTANT NOTE

DUE TO PRODUCTION TOLERANCES IN
 ALUMINIUM, PAINTING/ANODISING,
 GLASS AND GASKETS, CHECK AND
 TRIAL ABOVE FORMULAE BEFORE
 PROCEEDING WITH BULK PRODUCTION.



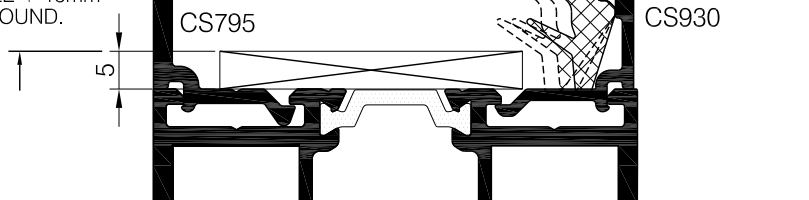
CAPTIVE GASKET ref.	GASKET VALUE M/M	MAX M/M			WEDGE VALUE M/M	WEDGE INSERT ref.
GK425	5	45	44	43	5 - 7	GK906
GK425	5	43	42	41	7 - 9	GK908
GK425	5	41	40	39	9 - 11	GK910
		MIN M/M				

OUTSIDE

INSIDE

SIGHT LINE ↓ GK425

GLASS SIZE =
SIGHT SIZE + 15mm
ALL ROUND.



DOUBLE GLAZED DOOR SYSTEM
WITH SQUARE BEAD.

ORDER OF ASSEMBLY:-

1. BEAD CS795.
2. CAPTIVE GASKET.
3. GLASS OR PANEL.
4. CS929-930 SQUARE BEAD.
5. INSERT WEDGE GASKET.

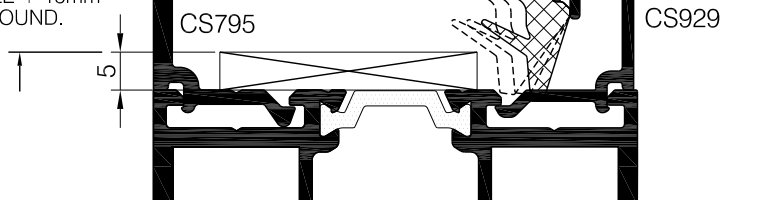
CAPTIVE GASKET ref.	GASKET VALUE M/M	MAX M/M			WEDGE VALUE M/M	WEDGE INSERT ref.
GK425	5	38	37		5 - 7	GK906
GK425	5	37	36	35	7 - 9	GK908
GK425	5	35	34	33	9 - 11	GK910
		MIN M/M				

OUTSIDE

INSIDE

SIGHT LINE ↓ GK425

GLASS SIZE =
SIGHT SIZE + 15mm
ALL ROUND.



TO ENSURE SATISFACTORY
PRODUCT PERFORMANCE,
BOTTOM CORNERS AND
INTERNAL GASKET CORNER
JOINTS SHOULD BE
SILICONE SEALED.

IMPORTANT NOTE

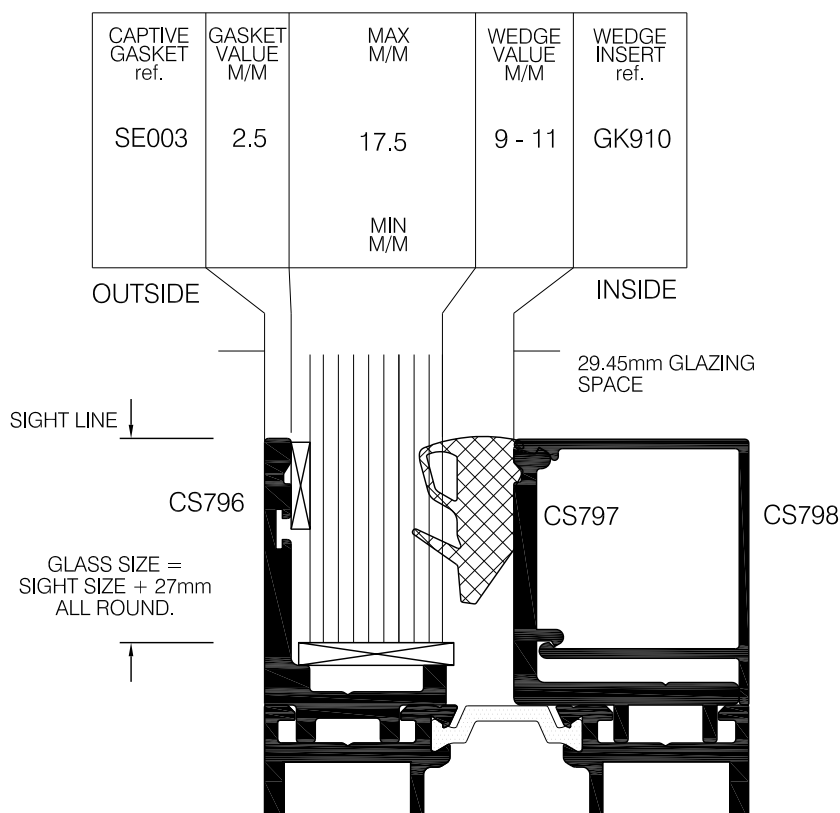
DUE TO PRODUCTION TOLERANCES IN
ALUMINIUM, PAINTING/ANODISING,
GLASS AND GASKETS, CHECK AND
TRIAL ABOVE FORMULAE BEFORE
PROCEEDING WITH BULK PRODUCTION.



SECURELY GLAZED DOOR SYSTEM
WITH SQUARE BEAD.

ORDER OF ASSEMBLY:-

1. FIX & SECURE CS796 OUTSIDE BEAD USING PRESCRIBED SCREW.
2. FIT SECURITY TAPE SE003 TO CS796.
3. FIT GLASS & PRESS AGAINST PROFILE.
4. FIT CS797 & PRESS HARD & SECURE USING PRESCRIBED SCREWS.
5. INSERT CAPTIVE GASKET.
6. FIT CS798 SECURITY BEAD COVER IN PLACE.



TO ENSURE SATISFACTORY
PRODUCT PERFORMANCE,
BOTTOM CORNERS AND
INTERNAL GASKET CORNER
JOINTS SHOULD BE
SILICONE SEALED.

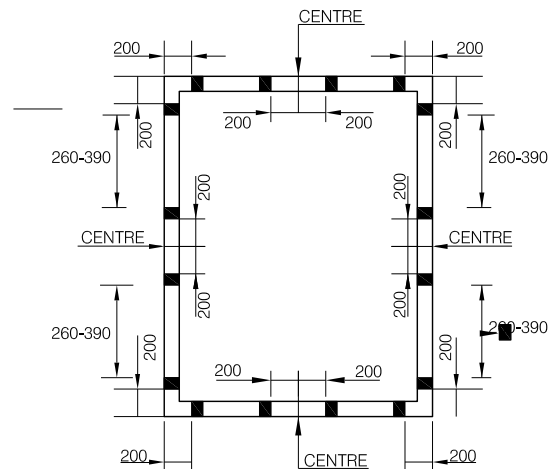
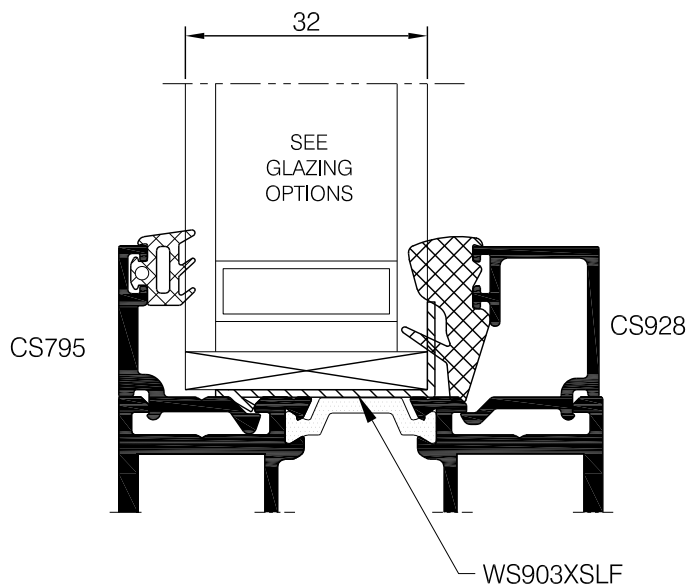
IMPORTANT NOTE

DUE TO PRODUCTION TOLERANCES IN
ALUMINIUM, PAINTING/ANODISING,
GLASS AND GASKETS, CHECK AND
TRIAL ABOVE FORMULAE BEFORE
PROCEEDING WITH BULK PRODUCTION.



IMPORTANT NOTE

DUE TO PRODUCTION TOLERANCES IN ALUMINIUM, PAINTING/ANODISING, GLASS AND GASKETS, CHECK AND TRIAL ABOVE FORMULAE BEFORE PROCEEDING WITH BULK PRODUCTION.



TO ENSURE SATISFACTORY PRODUCT PERFORMANCE, BOTTOM CORNERS AND INTERNAL GASKET CORNER JOINTS SHOULD BE SILICONE SEALED.

SECURITY GLAZING CLIP INSERTION.**ORDER OF ASSEMBLY:-**

1. ENSURE YOU HAVE THE CORRECT CLIP FOR THE GLASS THICKNESS AND BEAD ARRANGEMENT.
2. HANDLE THE CLIPS WITH CARE AS THEY MAY HAVE SHARP EDGES.
3. SECURE EXTERNAL BEADS-100MM CENTRES AND FIT CORRECT CAPTIVE GASKET. SEAL THE CORNERS.
4. AFFIX CLIPS IN BOTTOM RAIL WITH GLUE. SECURE GLAZING PACKERS WITH GLUE SECURITY CLIPS SHOULD BE 200MM FROM CORNERS AND MAXIMUM 390MM APART CENTRE TO CENTRE.
5. STAND GLASS ONTO THE CLIP AND GLASS PACKER.
6. USE SHORT PIECES OF GLAZING BEAD TO TEMPORARILY SECURE THE GLASS UNIT.
7. TOE AND HEEL THE UNIT, ENSURING THE DOOR CAN OPERATE CORRECTLY.
8. USE WEDGE GASKET AND SHORT BEAD PIECES LOCALLY TO THE POSITION OF THE CLIP VERTICALLY AT CENTRES.
9. FIT THE CLIPS VERTICALLY ONCE THE WEDGE HAS APPLIED COMPRESSION TO THE GASKET. USE GLUE TO SECURE. ONCE IN PLACE SLIDE GLASS PACKERS INTO POSITION BETWEEN UNIT AND CLIP. SECURE WITH GLUE. DO NOT FORCE IN AS THIS WILL DISTURB THE TOE AND HEEL SET UP ALREADY COMPLETED.
10. MOVE THE BEAD/GASKET PIECES TO EACH POSITION AND REPEAT. THERE IS NO REQUIREMENT TO FIT CLIPS IN THE HEAD.
11. INSERT BEADS AND APPLY WEDGE GASKET. THE WEDGE GASKET WILL RIDE OVER THE EXPOSED CLIP EDGE WITHOUT CUTTING.

