

Uniclass	EPIC
L411:P43	D11:X421
CI/SfB	
(31-5) Xh4	



comar
ARCHITECTURAL ALUMINIUM SYSTEMS

comar7P.i HSD

Horizontal Sliding Door System

The Parkside Group Ltd

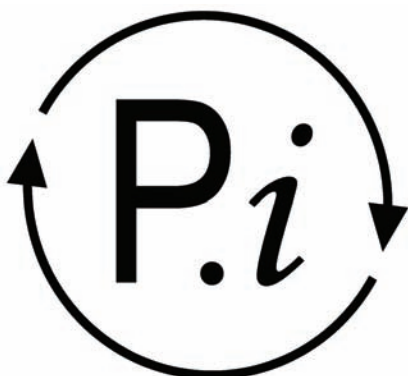
Unit 5, The Willow Centre
17 Willow Lane, Mitcham
Surrey CR4 4NX

Tel: +44(0) 20 8685 9685

Fax: +44(0) 20 8646 5096

Email: sales@parksidegrp.co.uk

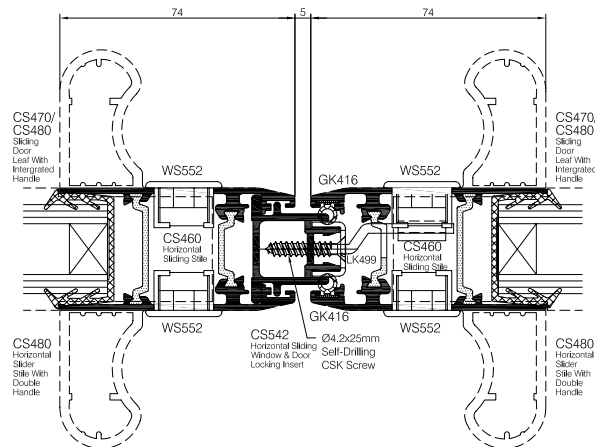
Web: www.comar-alu.co.uk



complementing architecture

design

Comar 7P.i HSD Central Meeting Stile



Comar 7P.i Horizontal Sliding Door

The Comar 7P.i HSD is the latest addition to the innovative Comar 7P.i door suite. With ever increasing demands for energy efficient building materials, Comar 7P.i HSD incorporates the trademarked Pi thermal efficiency providing low U-values with an aesthetically pleasing finish. Pi is a 20mm – 35mm polyamide strip manufactured from reinforced glass fibre, which separates the inner and outer profiles creating an extremely effective thermal break.

Comar 7P.i HSD has been developed for applications where high specification and elegant solutions are a key design factor, such as offices, apartments, hospitals and schools. It provides a unique solution where other door types would cause an obstruction internally or externally.

Function is achieved by designing into this elegant profile suite the very latest components. A polyamide track, with reinforced nylon tandem rollers, has a precision adjustment mechanism which means that the same components can be used on all sizes of doors. This also

serves to ensure long-term ease of maintenance as well as allowing for fabrication, profile and track tolerances. This is borne out by the testing in wet and sandy conditions of over 200,000 open/close cycles. The strength of the system is proven through the capability to carry 180kg of weight per roller. The tandem rollers and polyamide track can be replaced as part of general maintenance without the need to disassemble the door.

For applications where safety is a concern, door restrictors can be fitted to the door at increments to suit the application.

Form is met through the use of 38.5mm curved jambs and reinforced stiles incorporating full height handles. Exceptional weather performance is created by woolpile that has an integral plastic fin and bubble gaskets at the interlock.

For prestigious projects, the frames can be dual colour with different colours to the interior and exterior profiles.

perform

Combinations & Integration

The door system can be manufactured in the following combinations:

- 2 part sliding (2 track)
- 3 part sliding (3 track)
- 4 part sliding with fixed panes (2 track)
- 6 part sliding with fixed panes (3 track)

The inherent integration that is a cornerstone of all Comar products forms a natural element of the Comar 7P.i HSD. It can be integrated into Comar 2 window walling, Comar 6 curtain walling and can also be coupled directly to Comar 7P.i rebated doors.

Locking Options

Locking options are achieved through a single action key that throws multi-point bolts to comply with the recommendations laid down by the Master Locksmith Association.

Ventilation

In keeping with the latest building regulations, we would recommend the use of Comar-DUCO flat in-glaze ventilation which can provide air-flow up to 15,000mm².

Glazing Options

Panels and glass can be incorporated into Comar 7P.i HSD with options for 10-12mm or 23-29mm widths.

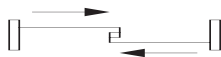
Thermal Performance of Door Sets

	Centre Pane Value (W/m ² K)		
	1.5	1.2	1.1
2 pane	2.06	1.81	1.73
3 pane	2.06	1.81	1.72
4 pane	2.04	1.79	1.70

Size Limitations

	Width	Height
2 pane	3000mm	2500mm
3 pane	4500mm	2500mm
4 pane	6000mm	2500mm
6 pane	6000mm	2500mm

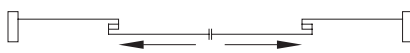
2 leaf 2 slide



3 leaf 3 track



4 leaf 2 track



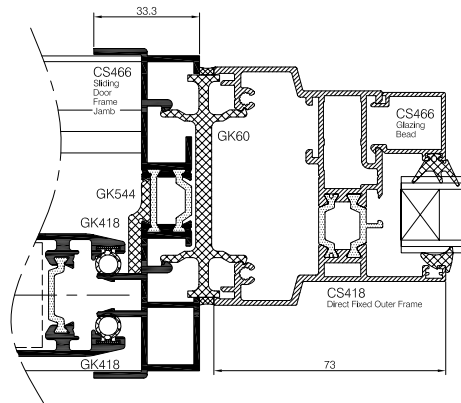
6 leaf 3 track



COMAR7P.i HSD

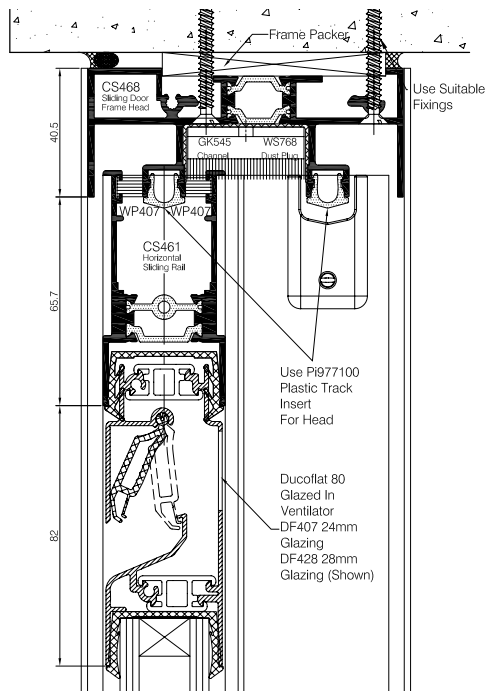
Coupling Detail

General arrangement showing coupling detail of Comar 7P.i HSD into Comar 5P.i Window System



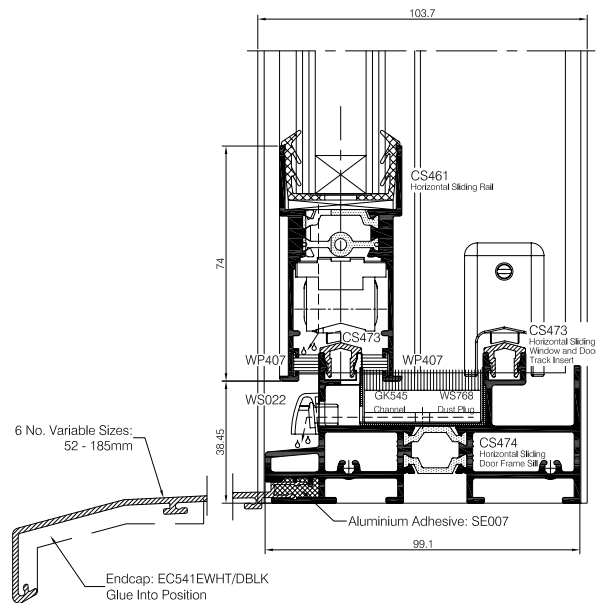
In-frame Window Ventilator

General arrangement showing glazed in Comar-DUCO Ventilator



Sill Detail

General arrangement showing Comar 7P.i HSD Sill Detail



Technical Back-Up

An experienced Sales Team covers the UK while the Technical Department offers an unsurpassed design and installation advice service to designers, specifiers and fabricators; simply call: +44(0) 20 8685 9685

For More Information

To find out more about this or any other Comar Architectural Aluminium System, or to obtain your personal copies of the COMAR TECHNICAL MANUALS, call: +44(0) 20 8685 9685 or fax on: +44(0) 20 8646 5096