

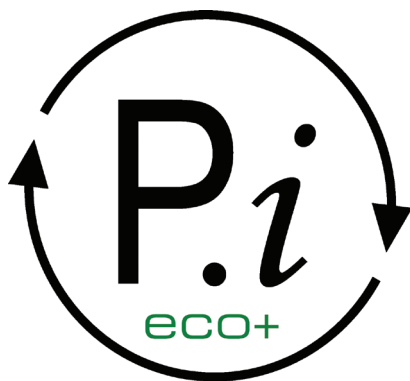
Uniclass	EPIC
L413:P43	D13:X421
CI/SfB	
(31.4)	Xh4



**comar**  
ARCHITECTURAL ALUMINIUM SYSTEMS

## comar5P.i ECO+

Thermally efficient Polyamide Insulation (P.i) casement window system,  
designed for aesthetics, security and performance.



complementing architecture

# comar

Comar Architectural Aluminium Systems constantly look for ways to exceed what the market demands. Current trends are for window and door systems to provide aesthetics as well as achieve environmental, security, thermal efficiency and life cycle targets. Therefore, Comar are pleased to launch their latest development: the Comar 5P:i ECO+ range.

Comar 5P:i ECO+ has been designed to perform, whilst backed by Comar's market leading delivery. Comar 5P:i ECO+ offers additional thermal performance to the Comar ECO product range: by extending the polyamide strips and inserting thermal foam, this product range will provide a future-proof solution for casement windows meeting U-values up to 2016.

With more and more onus on the environment, window and door systems must be sustainable. Using aluminium the Comar 5P:i ECO+ system is 100% recyclable. Aluminium can be recycled an infinite number of times with no loss to its capability. Comar operates an Environmental Management System certified to ISO 14001.

Due to its slim profiles, the Comar 5P:i ECO+ range weighs less than 0.79Kg per linear metre and therefore achieves a Green Guide A+ rating, which can help specifiers achieve the highest BREEAM levels.

For added reassurance and Comar Architectural Aluminium Systems holds both a Kitemark and Secured by Design licence for its ECO product range.



# perform

## Comar 5P.i ECO+

Comar 5P.i ECO+ has been designed and priced to appeal to the demands of today's market. Curve and feature accentuate the slim aluminium profiles, maximising glazed area with the capacity to glaze units up to 40mm.

Comar 5P.i ECO+ has a dual colour option: the internal and external faces of the profiles can be polyester powder coated or anodised in a multitude of colours and finishes.

Thermal efficiency concerns are alleviated with Comar 5P.i ECO+ window, achieving a Grade "A" Window Energy Rating (WER). This is backed up by Comar's Technical Department offering project-by-project U-values as well as structural calculations.

Comar 5P.i ECO+ window has shoot bolt option, which conforms to PAS24:2012. Comar is a Secured by Design licence holder.

Tooling is available ensuring that punches and preparations are accurate and reduce wastage. In order to appeal to the very latest production preferences, two methods of manufacture are available: spring-loaded cleats or crimping.

## Weather Performance

Air tightness	600Pa
Water tightness	600Pa
Wind resistance	2400Pa

## Size Limitations

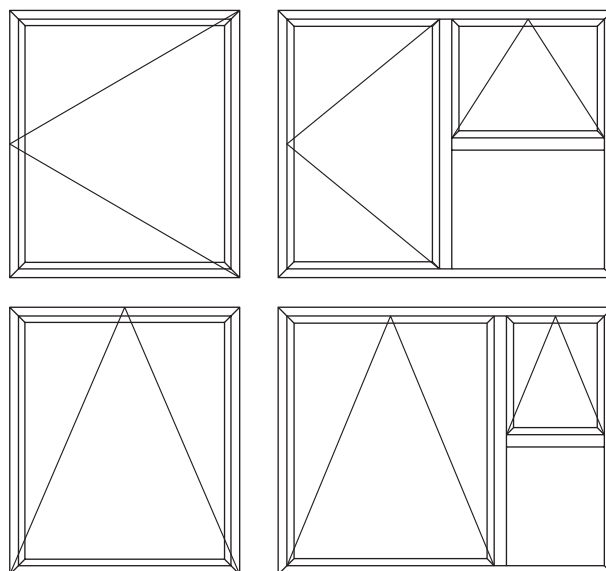
	Height	Width
Side-hung/projected	1300	700
Top-hung/projected	1200	1200

## Combinations

The Comar 5P.i ECO+ can be manufactured in all casement configurations, side and top-hung and projected, with cockspur or shoot-bolt locking. Comar 5P.i ECO+ system can integrate directly with Comar 7P.i ECO to create seamless window and door composites.

## Specification

Comar 5P.i ECO+ can be specified in NBS Clause L10.

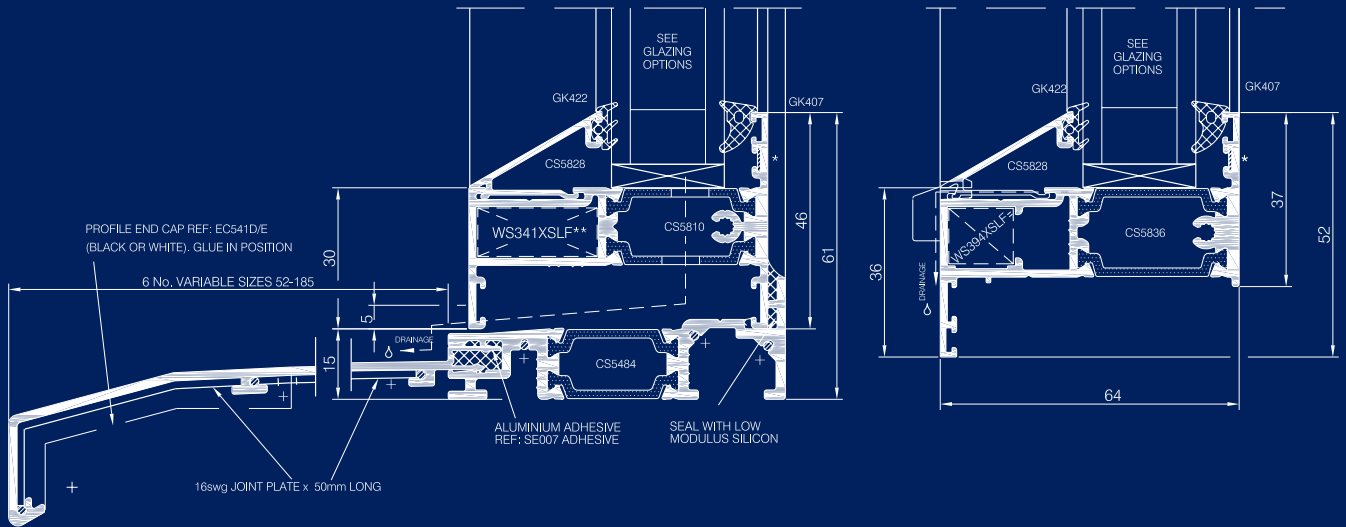


## Thermal Performance

	Calculated to CEN Sizes 1.0 Centre Pane U-value	Calculated to CEN Sizes 0.5 Centre Pane U-value
Comar 5P.i ECO+	1.33	0.89

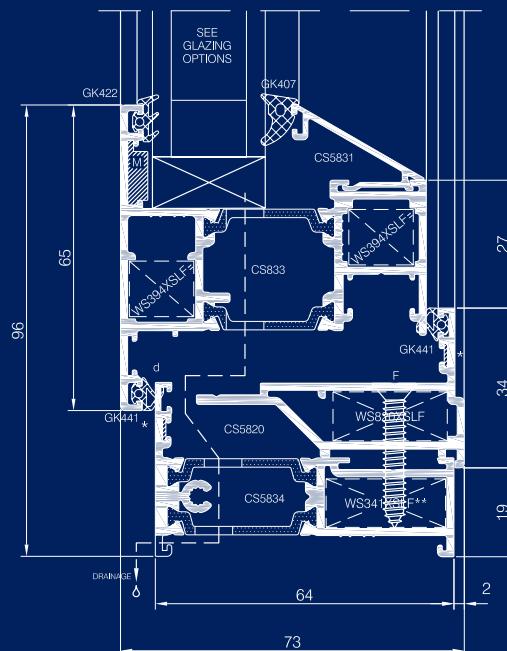
# perform

## Comar 5P.i ECO+ Externally Beaded



General arrangement showing Comar 5P.i ECO+ window outer frame sill details, fixed light, externally beaded.

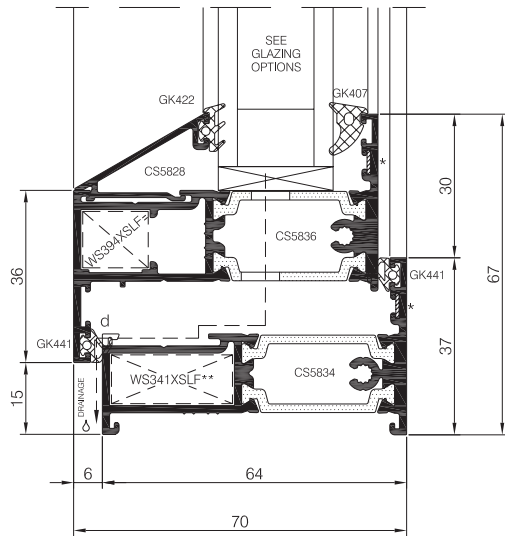
## Comar 5P.i ECO+ Internally Beaded



General arrangement showing Comar 5P.i ECO+ window outer frame, open out sill detail, internally beaded vent with transfer profile.

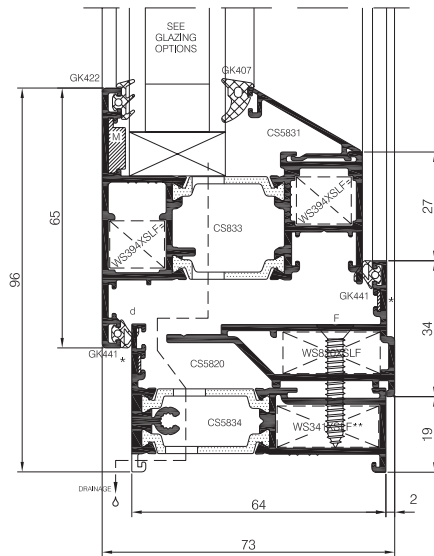
# on-time

## Comar 5P.i ECO+ Opening Vent With Cockspur Locking



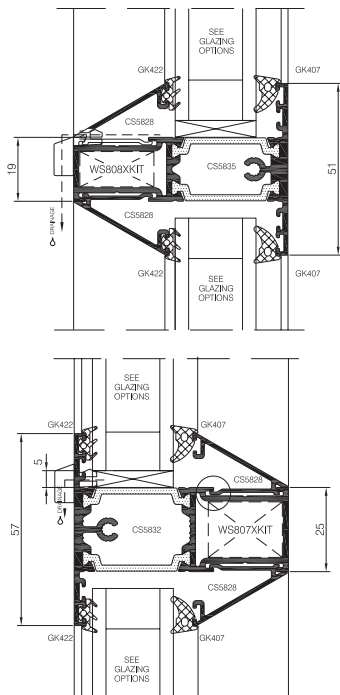
General arrangement showing the outer frame, open out sill detail, externally beaded vent.

## Comar 5P.i ECO+ Opening Vent With Shoot-bolt Locking



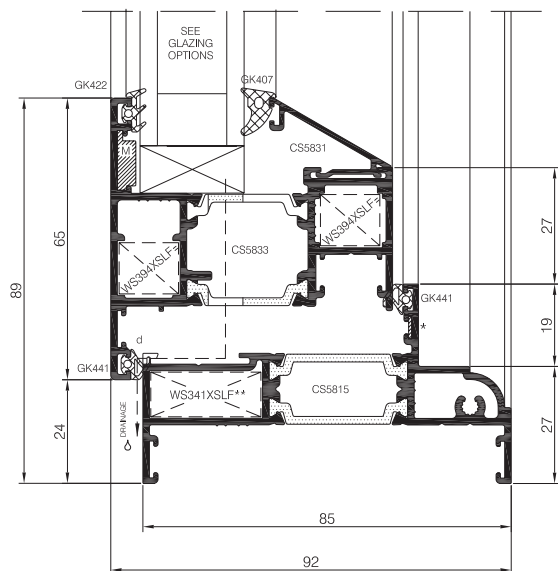
General arrangement showing the outer frame, open out sill detail internally beaded.

## Comar 5P.i ECO+ Mullion/Transom Detail



General arrangement showing mullion/transom details, externally/ internally beaded section.

## Comar 5P.i ECO+ Sill Detail



General arrangement showing window wide outer frame, open out sill detail internally beaded.

**The Parkside Group Ltd**

Unit 5, The Willow Centre  
17 Willow Lane, Mitcham  
Surrey CR4 4NX

Tel: +44(0) 20 8685 9685

Fax: +44(0) 20 8646 5096

Email: [projects@parksidegroup.co.uk](mailto:projects@parksidegroup.co.uk)

Web: [www.comar-alu.co.uk](http://www.comar-alu.co.uk)



**Technical Back-Up**

An experienced Sales Team covers the UK while the Technical Department offers an unsurpassed design and installation advice service to designers, specifiers and fabricators; Simply call: +44(0) 20 8685 9685

**For More Information**

To find out more about this or any other Comar Architectural Aluminium System, or to obtain your personal copies of the Comar Technical Manuals call: +44(0) 20 8685 9685 or fax on: +44(0) 20 8646 5096