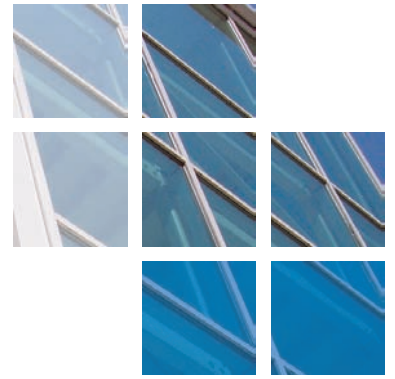




comar

ARCHITECTURAL ALUMINIUM SYSTEMS



Enfield Lock School - Essex



Enfield Lock School was a new build project and was completed in July 2003 by Comar Architectural Aluminium Systems and one of their Approved Fabricators, Magnum.

The design concept was to create a school that would create a pleasant and colourful environment for the attending children. The integrated systems of the Comar range meant that the whole envelope could be completed from a single source. Comar offer polyester powder coating as part of their service. LBOS Enfield could rely on Comar's aluminium arriving on time and polyester powder coated to the specified yellow and light blue/grey RAL colour. Comar use Qualicoat license holders for powder coating; this means that the quality of the powder coating is guaranteed for 25 years.

Magnum obtained calculations from Comar's Technical Department in the early design stage of this project for both u-Value and wind loading calculations. This meant that when Magnum were consulted in the design phase of the project, Magnum's expertise was utilised to over-come any issues from taking the design to fabrication and installation.

Comar 2 window walling, the cost effective alternative to curtain walling, was used on this project. Comar 2 is a versatile system and is ideal for single to medium storey applications as both opening vents and doors can be directly integrated into the façade.

Comar 2's flexibility was used to create the faceted bay windows. Specialist corner profiles are available within the Comar 2 range which can be used to create 90° to 135° returns. This ensured that the ground floor framing and the faceted bays kept the same 35mm or 45mm sight-lines.

Comar 7 swing doors were used for entrances and incorporated Comar's anti-finger traps and Comar 5 50mm windows available in top hung, side hung, bottom hung, tilt & turn, pivot configurations integrated into Comar 2.

Comar 5 was also used to create the top hung over fixed frame windows. The project ran smoothly over a 12 week period, resulting in a successfully completed project and a school that will stand the test of time.

PROJECT DETAILS

Architects
LBOS Enfield.

Fabricator
Magnum.

Main Contractor
Jerome Falkus Ltd

Project Value
£250,000.

Systems Used
Comar 2, 5 & 7.

Location
Enfield, Essex.

Enfield Lock School - Essex

Comar, the leading British Aluminium Systems House, designs and extrudes over 700 aluminium profile sections. A team of specification consultants provide project-by-project design, calculations and NBS specification advice to architects. Comar distributes profiles to a nationwide network of fabricators for manufacture and installation.

Retail Aluminium Architecture

Inherent strength and slim sight-lines make Comar aluminium the specification product of choice for all retail outlets. Comar offers extensive systems which integrate to provide aesthetic appeal to potential retail customers.

Step through Comar 7, an extensive range of sliding, automatic, folding or swing doors. Overhead Comar 6 creates sloped, pitched or barrel vaults which cast light throughout the retail complex or outlet. Comar 1,3,4 & 8 integrate with Comar 7 to provide shop-fronts with various angle returns and height capability. Comar 6 curtain walling houses the envelope with a variety of cover caps which complement panels and glazing.

Commercial Aluminium Architecture

Statement of function is the key element of commercial building design. From designing industrial units to corporate headquarters the flexibility of Comar Aluminium Systems can integrate with panel systems and provide curtain wall with opening vents and windows in a variety of configurations. Comar can

powder coat the aluminium system to your RAL, BS or Syntha Pulvin colour to complement the façade.

Education & Public Building Aluminium Architecture

Comar have worked in conjunction with Local Authorities to design specific products for use in the education and public building sector. The nature of public building construction demands cost effective, robust solutions. Comar 2 is a cost saving alternative to curtain walling, creating glazed façades for medium rise buildings, stairwells and entrances. Comar 2 integrates with Comar 5 and 5LT windows with espagnolette locking handles to provide security and Comar 7 Doors with anti-finger traps to provide safety. Comar's integrated systems ensure a cost effective, aesthetic façade with security and safety as standard.

RIBA CPD Provider

Comar provides RIBA assessed CPD Seminars to architects and specifiers throughout the UK. There are two seminars available; please complete the faxback for further details.

**Comar Architectural Aluminium Systems,
Unit 5, The Willow Centre,
17 Willow Lane, Mitcham,
Surrey. CR4 4NX.**

| tel: 020 8685 9685 |
| fax: 020 8646 5096 |
| email: info@parksidegrp.co.uk |



GROUND FLOOR TREATMENT	
COMAR 1	Single Glazed GFT
COMAR 2	Double Glazed GFT
COMAR 4	Single Glazed GFT
COMAR 8	Fin/Bead GFT
CURTAIN WALLING	
COMAR 6	Curtain Walling, Stick Build & Ladder Frame, Square Cut & Step Cut.
DOORS	
COMAR 7	Doors, Folding, Sliding, Swing & Polyamide Rebated.
WINDOWS	
COMAR 5	Windows, 45mm, 50mm & 60mm Polyamide.
WINDOW WALLING	
COMAR 2	Feature Wall T.B. Window Walling, Thermally Broken.

fax-back fax-back fax-back fax-back

NAME:

ADDRESS:

.....

COMPANY:

TEL:

FAX:

EMAIL:

I would like to hear more about Comar Architectural Aluminium Systems (Please tick):

Ground Floor Treatment Curtains Walling
Windows Doors

or I would like to be contacted by my local Comar project consultant.

Please fax this form back to 020 8646 0777

