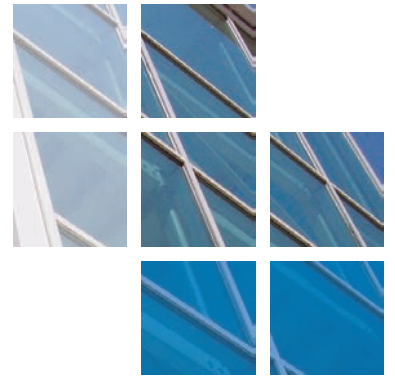




comar

ARCHITECTURAL ALUMINIUM SYSTEMS



Yaffle Care Home, Dorset.



Comar Architectural Aluminium Systems; with their approved fabricator RTJ Solutions recently completed a new build residential care and nursing home in Dorset. The home offers 24 hour nursing care and its key features are the spacious rooms with balconies, communal spaces, dining rooms, hair salon, music hall, pub and library. Naturally in a care home environment comfort and warmth are of paramount importance making Comar systems a natural choice as they have excellent air-tightness and thermal performance.

The project was completed using Comar 5P.i tilt & turn and 5P.i ECO casement windows. The Comar 5P.i window system uses trademarked Polyamide Insulated (P.i) that provides exceptional thermal performance in a market where energy efficient designs and meeting the demands of the latest building regulations are paramount. All configurations, such as casement, top swing reversible, pivot, tilt and turn and sliding can be manufactured. These windows offer outstanding weather performance and reduce heat loss through the trademark P.i thermal break ensuring low U-values so energy bills are minimised. Comar 5P.i ECO is a casement window system which includes a 55mm and 75mm option.

In a busy social care environment, Comar 7P.i Commercial Door sets are a natural choice. Not only are they available in swing, pivot, sliding, auto-sliding and sliding folding, they have been designed specifically for public applications where high traffic solutions are required. In the rooms with balconies Comar 7P.i ECO doors were selected and the Comar 7P.i CD Auto Sliding doors were installed in the high traffic communal areas. These entrance doors were also required to comply with the Disability & Equality Act 2010.

All Comar approved fabricators are required to have the technical expertise to attend pre-site meetings and provide detailing. RTJ Solutions Ltd liaised closely with the specifiers to provide design advice and detailing which ensured the project ran smoothly and met site deadlines.

PROJECT DETAILS

Architects: QP Architecture

Fabricator: RTJ Solutions Ltd

Main Contractor:
Acheson Construction Ltd

Project Value: £124,300

System Used: Comar
5P.i ECO Casement & 5P.i T&T
7P.i CD Auto Sliding & 7P.i ECO

Location: Broadstone, Dorset



Yaffle Care Home, Dorset.

The Parkside Group incorporates Comar Architectural Aluminium Systems, Alu-Timber, an aluminium/timber composite system of windows, doors and framing, Axim Architectural Hardware and Duco ventilation and sun control.

This provides a unique opportunity for specifiers and fabricators to rely on a single source for building envelope and integrated systems.

Comar
Comar Architectural Aluminium Systems is the largest British, privately owned aluminium systems company in Europe. Comar designs, extrudes and distributes over 700 integrated profiles to a nationwide approved fabricator network for use in aluminium ground floor treatment, window, door and curtain walling applications. Comar has built its reputation on delivery; over £5M of mill, white polyester powder coating, silver, bronze and anodised profiles are kept in stock. This means that 99% of orders are fulfilled by our customers' weekly delivery.

Alu-Timber - Merging Material Solutions. Creating sustainable, energy efficient buildings is a cornerstone of design.

Alu-Timber, a range of aluminium/timber windows, doors and framing, that combines sustainably grown FSC or PEFC timbers with 100% recyclable aluminium. Alu-Timber gives the specifier benefits: low U-values to achieve current legislation as well as reassurance for the client that the facade will last, with minimal maintenance.

Comar Duco
Comar-Duco produce market leading ventilation and sun control products that continually evolve to meet the latest demands that building regulations command. This comprehensive solution to provide single source aluminium facades, with ventilation and solar shading, incorporates Window Ventilation, including acoustic ventilation, Architectural Louvres, Continuous Louvre Walls and Solar Shading.

Axim
As part of the The Parkside Group, Axim supply a full range of architectural aluminium door hardware including: concealed transom closers, floor springs, surface mounted closers, flush bolts, panic exit devices, handles, letter plates and other ancillary items.

RIBA CPD Provider
The Parkside Group provides RIBA assessed CPD seminars to architects and specifiers throughout the UK. Please contact us for further details.

Nationwide Architectural Specification Team
Comar Architectural Aluminium Systems have a nationwide team of architectural advisors who specialise in providing architects and specifiers with project support and NBS specifications. Fabricators and installers are supported by a team of Territory Managers.



GROUND FLOOR TREATMENT	
COMAR 1	Single Glazed GFT
COMAR 3	Double Glazed GFT
COMAR 4	Single Glazed GFT
COMAR 8	Fin/Bead GFT
CURTAIN WALLING	
COMAR 6	Curtain Walling, Stick Build & Ladder Frame, Square Cut & Step Cut.
COMAR 6	EFT Structural Glazing 2 & 4 sided
DOORS	
COMAR 7	Doors, Folding, Sliding, Swing & Polyamide Rebated.
WINDOWS	
COMAR 5P.i	Windows, 55mm, 60mm & 75mm Polyamide insulation.
WINDOW WALLING	
COMAR 9P.i	High Performance Window, Doors & Framing.



The Parkside Group Ltd.,
Unit 5, The Willow Centre,
17 Willow Lane, Mitcham, Surrey,
CR4 4NX.

Tel: 0208 685 9685
Fax: 0208 685 9696
Email: projects@parksidegroup.co.uk
www.parksidegroup.co.uk

