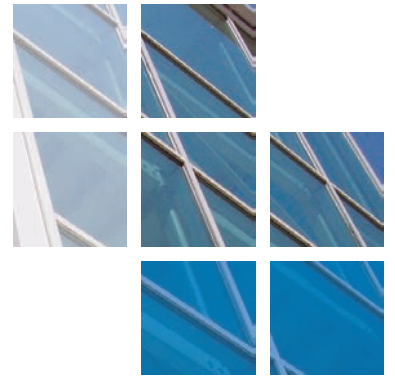




comar

ARCHITECTURAL ALUMINIUM SYSTEMS



TK Maxx, Woolwich Triangle, London.



Comar Architectural Aluminium Systems, with their approved fabricator APIC completed a new TK Maxx flagship store in Woolwich, London. The store is situated in the area known as the 'White Hart Triangle', Royal Greenwich's biggest industrial development which has attracted both LDA and Royal Borough Funding in the region of £19.5 million. The site which was previously derelict land between Thamesmead and Woolwich is now home to various types of businesses.

For this facade, the design of Comar 6 made it an ideal choice for this complex faceted curtain wall. Comar 6 was selected due to its slim 50mm profiles which maximised the glazed area for natural day lighting and its special faceted profiles which created the curved facade. To provide opening vents to the curtain walling Comar 5P.i windows were selected. Polyamide Insulated (P.i) window and door systems provide exceptional thermal performance in a market where energy efficient designs and meeting the demands of the latest building regulations are paramount.

In a busy retail environment, Comar 7P.i Commercial Door sets are a natural choice. They have been designed specifically for applications where high traffic solutions are required. For safety, Comar 7P.i doors were fitted with rounded Anti-finger trap stiles, Axim soft touch Panic Exit Devices and Axim Concealed Transom Closers. The doors were hung directly from the Comar 6 curtain wall, reducing metal content and complying with the Disability & Equality Act 2010.

All Comar approved fabricators are required to have the technical expertise to attend pre-site meetings and provide detailing. APIC liaised closely with the specifiers to provide design advice and detailing which ensured the project ran smoothly and met site deadlines.

PROJECT DETAILS

Architects: Douglas Moat

Contractor: Anglo Holt

Fabricator: APIC (UK) Ltd

Project Value: £80,000

System Used:
Comar 5P.i, 6 Stick & 7P.i CD

Location:
Woolwich Triangle, London



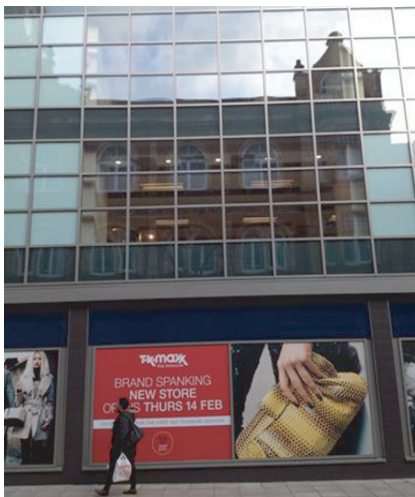
TK Maxx Store, Woolwich Triangle, London.

The Parkside Group incorporates Comar Architectural Aluminium Systems, Alu-Timber, an aluminium/timber composite system of windows, doors and framing, Axim Architectural Hardware and Duco ventilation and sun control.

This provides a unique opportunity for specifiers and fabricators to rely on a single source for building envelope and integrated systems.

Comar
Comar Architectural Aluminium Systems is the largest British, privately owned aluminium systems company in Europe. Comar designs, extrudes and distributes over 700 integrated profiles to a nationwide approved fabricator network for use in aluminium ground floor treatment, window, door and curtain walling applications. Comar has built its reputation on delivery; over £5M of mill, white polyester powder coating, silver, bronze and anodised profiles are kept in stock. This means that 99% of orders are fulfilled by our customers' weekly delivery.

Alu-Timber - Merging Material Solutions. Creating sustainable, energy efficient buildings is a cornerstone of design.



Alu-Timber, a range of aluminium/timber windows, doors and framing, that combines sustainably grown FSC or PEFC timbers with 100% recyclable aluminium. Alu-Timber gives the specifier benefits: low U-values to achieve current legislation as well as reassurance for the client that the facade will last, with minimal maintenance.

Comar Duco
Comar-Duco produce market leading ventilation and sun control products that continually evolve to meet the latest demands that building regulations command. This comprehensive solution to provide single source aluminium facades, with ventilation and solar shading, incorporates Window Ventilation, including acoustic ventilation, Architectural Louvres, Continuous Louvre Walls and Solar Shading.

Axim
As part of the The Parkside Group, Axim supply a full range of architectural aluminium door hardware including: concealed transom closers, floor springs, surface mounted closers, flush bolts, panic exit devices, handles, letter plates and other ancillary items.

RIBA CPD Provider
The Parkside Group provides RIBA assessed CPD seminars to architects and specifiers throughout the UK. Please contact us for further details.

Nationwide Architectural Specification Team
Comar Architectural Aluminium Systems have a nationwide team of architectural advisors who specialise in providing architects and specifiers with project support and NBS specifications. Fabricators and installers are supported by a team of Territory Managers.



GROUND FLOOR TREATMENT

- COMAR 1** Single Glazed GFT
- COMAR 3** Double Glazed GFT
- COMAR 4** Single Glazed GFT
- COMAR 8** Fin/Bead GFT

CURTAIN WALLING

- COMAR 6** Curtain Walling, Stick Build & Ladder Frame, Square Cut & Step Cut.
- COMAR 6** EFT Structural Glazing 2 & 4 sided

DOORS

- COMAR 7** Doors, Folding, Sliding, Swing & Polyamide Rebated.

WINDOWS

- COMAR 5P.i** Windows, 55mm, 60mm & 75mm Polyamide insulation.

WINDOW WALLING

- COMAR 9P.i** High Performance Window, Doors & Framing.

The Parkside Group Ltd.,
Unit 5, The Willow Centre,
17 Willow Lane, Mitcham, Surrey,
CR4 4NX.

Tel: 0208 685 9685
Fax: 0208 685 9696

Email: projects@parksidegroup.co.uk
www.parksidegroup.co.uk

