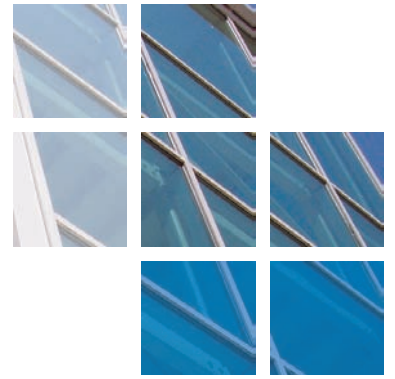




comar

ARCHITECTURAL ALUMINIUM SYSTEMS



Saville House, Sheffield.



Comar Architectural Aluminium Systems and their approved fabricator, APIC (U.K.) Ltd., was specified by Archial Architects to undertake the multi-cladded office development, Saville House in Sheffield, using aluminium glazed facades solutions from Comar and Eurobond cladding panels.

This 1960's warehouse was transformed into 100,000 sq foot of Grade A office accommodation. The interior was totally stripped out and refurbished, while the exterior of the nine-story brick and concrete structure has been re-clad using Europanel Extra panels with Comar 6EFT curtain walling and Comar 5Pi windows.

Comar and Europanel have collaborated to develop the Comar Cladding Interfaces range. These interfaces mimic the edge of Europanel's 86mm or 125mm panels. Comar 5Pi windows are manufactured with the interface around the outer-frames. This means that the Comar window can seamlessly be slotted into the facade as if it was part of the proprietary cladding system.

The architect, therefore, had an elegant solution which could incorporate structural glazing and capped curtain walling with punched windows into the cladding with the peace of mind that interfacing was catered for. The claddings were finished in silver metallic and grey aluminium, and were combined with horizontal bands of integral solar reflective glazing. The glass and blue panels were glazed into a variety of Comar 6EFT 4-sided SG and Comar 6EFT capped curtain walling - all the aluminium was polyester powder coated in a light grey RAL. The combination of tinted and sleek structural glazing meant that the glazed facade provided an eye-catching focal point to the building.

The architects and the cladding contractors worked closely together to create detailed design and interface details which meant the project ran smoothly and met site deadlines.

PROJECT DETAILS

Architects
Archial Architects Ltd. (Leeds)

Fabricator
APIC (U.K.) Ltd.

Main Contractor
Tolent Construction

Project Value
£500,000

System Used
Comar 6EFT

Location
Sheffield



Saville House, Sheffield.

The Parkside Group incorporates Comar Architectural Aluminium Systems, Alu-Timber, an aluminium/timber composite system of windows, doors and framing, Axim Architectural Hardware and Duco ventilation and sun control.

This provides a unique opportunity for specifiers and fabricators to rely on a single source for building envelope and integrated systems.

Comar
Comar Architectural Aluminium Systems is the largest British, privately owned aluminium systems company in Europe. Comar designs, extrudes and distributes over 700 integrated profiles to a nationwide approved fabricator network for use in aluminium ground floor treatment, window, door and curtain walling applications. Comar has built its reputation on delivery; over £5M of mill, white polyester powder coating, silver, bronze and anodised profiles are kept in stock. This means that 99% of orders are fulfilled by our customers' weekly delivery.

Alu-Timber - Merging Material Solutions. Creating sustainable, energy efficient buildings is a cornerstone of design.



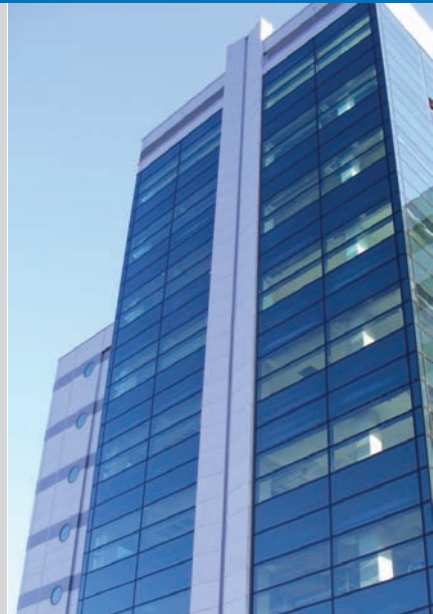
Alu-Timber, a range of aluminium/timber windows, doors and framing, that combines sustainably grown FSC or PEFC timbers with 100% recyclable aluminium. Alu-Timber gives the specifier benefits: low U-values to achieve current legislation as well as reassurance for the client that the facade will last, with minimal maintenance.

Comar Duco
Comar-Duco produce market leading ventilation and sun control products that continually evolve to meet the latest demands that building regulations command. This comprehensive solution to provide single source aluminium facades, with ventilation and solar shading, incorporates Window Ventilation, including acoustic ventilation, Architectural Louvres, Continuous Louvre Walls and Solar Shading.

Axim
As part of the The Parkside Group, Axim supply a full range of architectural aluminium door hardware including: concealed transom closers, floor springs, surface mounted closers, flush bolts, panic exit devices, handles, letter plates and other ancillary items.

RIBA CPD Provider
The Parkside Group provides RIBA assessed CPD seminars to architects and specifiers throughout the UK. Please contact us for further details.

Nationwide Architectural Specification Team
Comar Architectural Aluminium Systems have a nationwide team of architectural advisors who specialise in providing architects and specifiers with project support and NBS specifications. Fabricators and installers are supported by a team of Territory Managers.



GROUND FLOOR TREATMENT	
COMAR 1	Single Glazed GFT
COMAR 3	Double Glazed GFT
COMAR 4	Single Glazed GFT
COMAR 8	Fin/Bead GFT
CURTAIN WALLING	
COMAR 6	Curtain Walling, Stick Build & Ladder Frame, Square Cut & Step Cut.
COMAR 6	EFT Structural Glazing 2 & 4 sided
DOORS	
COMAR 7	Doors, Folding, Sliding, Swing & Polyamide Rebated.
WINDOWS	
COMAR 5	Windows, 45mm, 50mm, 55mm, 60mm & 75mm Polyamide.
WINDOW WALLING	
COMAR 2	Feature Wall T.B. Window Walling, Thermally Broken.
COMAR 9	High Performance Window, Doors & Framing

The Parkside Group Ltd.,
Unit 5, The Willow Centre,
17 Willow Lane, Mitcham, Surrey,
CR4 4NX.

Tel: 0208 685 9685
Fax: 0208 685 9696
Email: projects@parksidegroup.co.uk
www.parksidegroup.co.uk

