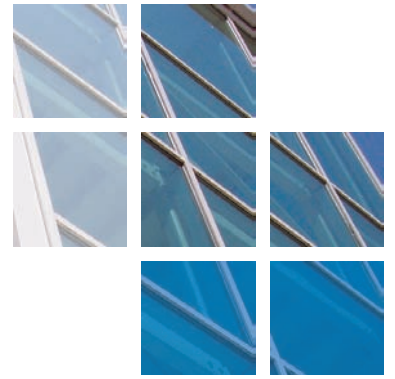




comar

ARCHITECTURAL ALUMINIUM SYSTEMS



Premier Inn, West Quay, Southampton.



Comar Architectural Aluminium Systems; with their approved fabricator H.H. Aluminium Ltd., have recently completed the new build Premier Inn Hotel at West Quay, Southampton. This aesthetically pleasing hotel is situated in an imposing position adjacent to the quay.

The architect's design vision was to create a continuous glass to glass perspective to the front of the hotel and this would prove to be challenging due to the large size of most of the units. With this in mind, and to ensure the design brief could be achieved, Comar 6EFT 4sided SG was selected as it offers architects a flexible system, providing a structurally glazed solution, with options for facets, concealed vents and an extensive range of profiles that caters for large structurally glazed panes.

Comar 5Pi tilt and turn windows were selected for this hotel. Comar 5Pi, is a Polyamide Insulated (P.i) window system that provides exceptional thermal performance in a market where energy efficient designs and meeting the demands of the latest building regulations are paramount. From fifteen basic Comar 5Pi profiles, all window configurations, such as casement, top swing reversible, pivot, tilt and turn and sliding can be manufactured.

Comar 7 auto sliding doors were installed to the hotel's reception. In any busy environment, Comar 7 commercial door sets are a natural choice as they have been designed specifically for commercial applications where high traffic solutions are required.

All the windows, curtain wall and doors were finished in a polyester powder coat in RAL 7012 Grey.

All Comar approved fabricators are required to have the technical expertise to attend pre-site meetings and provide detailing. H.H. Aluminium Ltd., liaised closely with the specifiers and the technical team at Comar to provide design advice and detailing which ensured the design criteria was met and the project ran smoothly.

PROJECT DETAILS

Main Contractor:
LSC Romsey

Fabricator:
H.H. Aluminium

Project Value:
£200K

System Used
Comar 5Pi, 6EFT & 7

Location
West Quay, Southampton.



Premier Inn, West Quay, Southampton.

The Parkside Group incorporates Comar Architectural Aluminium Systems, Alu-Timber, an aluminium/timber composite system of windows, doors and framing, Axim Architectural Hardware and Duco ventilation and sun control.

This provides a unique opportunity for specifiers and fabricators to rely on a single source for building envelope and integrated systems.

Comar
Comar Architectural Aluminium Systems is the largest British, privately owned aluminium systems company in Europe. Comar designs, extrudes and distributes over 700 integrated profiles to a nationwide approved fabricator network for use in aluminium ground floor treatment, window, door and curtain walling applications. Comar has built its reputation on delivery; over £5M of mill, white polyester powder coating, silver, bronze and anodised profiles are kept in stock. This means that 99% of orders are fulfilled by our customers' weekly delivery.

Alu-Timber - Merging Material Solutions. Creating sustainable, energy efficient buildings is a cornerstone of design.

Alu-Timber, a range of aluminium/timber windows, doors and framing, that combines sustainably grown FSC or PEFC timbers with 100% recyclable aluminium. Alu-Timber gives the specifier benefits: low U-values to achieve current legislation as well as reassurance for the client that the facade will last, with minimal maintenance.

Comar Duco
Comar-Duco produce market leading ventilation and sun control products that continually evolve to meet the latest demands that building regulations command. This comprehensive solution to provide single source aluminium facades, with ventilation and solar shading, incorporates Window Ventilation, including acoustic ventilation, Architectural Louvres, Continuous Louvre Walls and Solar Shading.

Axim
As part of the The Parkside Group, Axim supply a full range of architectural aluminium door hardware including: concealed transom closers, floor springs, surface mounted closers, flush bolts, panic exit devices, handles, letter plates and other ancillary items.

RIBA CPD Provider
The Parkside Group provides RIBA assessed CPD seminars to architects and specifiers throughout the UK. Please contact us for further details.

Nationwide Architectural Specification Team
Comar Architectural Aluminium Systems have a nationwide team of architectural advisors who specialise in providing architects and specifiers with project support and NBS specifications. Fabricators and installers are supported by a team of Territory Managers.



GROUND FLOOR TREATMENT	
COMAR 1	Single Glazed GFT
COMAR 3	Double Glazed GFT
COMAR 4	Single Glazed GFT
COMAR 8	Fin/Bead GFT
CURTAIN WALLING	
COMAR 6	Curtain Walling, Stick Build & Ladder Frame, Square Cut & Step Cut.
COMAR 6	EFT Structural Glazing 2 & 4 sided
DOORS	
COMAR 7	Doors, Folding, Sliding, Swing & Polyamide Rebated.
WINDOWS	
COMAR 5	Windows, 45mm, 50mm, 55mm, 60mm & 75mm Polyamide.
WINDOW WALLING	
COMAR 2	Feature Wall T.B. Window Walling, Thermally Broken.
COMAR 9	High Performance Window, Doors & Framing



The Parkside Group Ltd.,
Unit 5, The Willow Centre,
17 Willow Lane, Mitcham, Surrey,
CR4 4NX.

Tel: 0208 685 9685
Fax: 0208 685 9696
Email: projects@parksidegroup.co.uk
www.parksidegroup.co.uk

