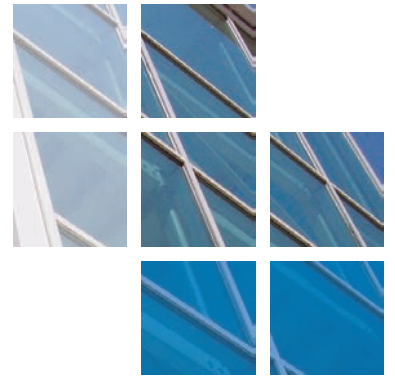




# comar

ARCHITECTURAL ALUMINIUM SYSTEMS



## The Spinney Centre, Peterborough - DIY SOS.



Comar Architectural Aluminium, Page Group (Peterborough) Ltd and Vertikal were delighted to have been part of the re-building of The Spinney Centre, Peterborough on behalf of The 'Little Miracles' Charity.

Comar Architectural Aluminium Systems, PAGE Group Peterborough and Vertikal donated £10K to cover materials, design work, project management, fabrication and labour on-site to erect the striking feature rainbow wall which forms part of a life changing transformation to the centre for disabled children in Peterborough. The Little Miracles Project, part of the BBC's charity 'Children in Need' was featured in the BBC1 special programme 'DIY SOS: Million Pound Build for Children in Need' which aired on Wednesday 13th November 2013.

The 'Little Miracles' charity runs a parent led support group/centre for children with additional needs, disabilities and life limiting conditions based in Peterborough. They help 800 families and have over 2,500 children registered. A staggering 83% percent of the families that use Little Miracles live below the poverty line, and as such all of the services they run are free of charge. For many of the children that use the centre, 'Little Miracles' is the only place they are able to communicate freely, make friends, and most importantly, be themselves.

In October 2013 they had to vacate their original site which was working out of a small semi-industrial space. They were gifted a larger 2½ acre site by the local council which included a 1970's concrete prefab. However, the building was not fit for purpose. It had no disabled toilets, access ramps or changing facilities. The prefab building also contained asbestos, and it was not secure, most importantly, it had none of the sensory equipment the children depend upon. The programmes presenter Nick Knowles and his team launched an appeal for help around the local area, and on Twitter, in a bid to round up friends, family, local companies and tradesmen to offer up their services to help rebuild the centre. A BBC spokesperson said: "We are looking for kind hearted tradesman who are willing to be part of the show and donate their time and skills for Children in Need. In return we offer three square meals, lots of fun and the chance to make a difference to the lives of children and their families". The existing prefab was demolished and DIY SOS built an entirely new centre using a timber frame structure featuring full wheelchair access, a dedicated sensory room, space for counselling, an office, workable disabled toilets, a working kitchen and an area for the kids to eat, along with distinct spaces for both the young and the older children that attend the centre.

### PROJECT DETAILS

The 'Little Miracles' Charity 2013 - BBC DIY SOS Million Pound Build for Children in Need

Donators:  
Page Group (Peterborough) Ltd,  
Comar  
& Vertikal

Project Value:  
£10K

System Used:  
Comar 5P.1, 6 & 7P.1

Location: Peterborough



# The Spinney Centre, Peterborough - DIY SOS.

The Parkside Group incorporates Comar Architectural Aluminium Systems, Alu-Timber, an aluminium/timber composite system of windows, doors and framing, Axim Architectural Hardware and Duco ventilation and sun control.

This provides a unique opportunity for specifiers and fabricators to rely on a single source for building envelope and integrated systems.

**Comar**  
Comar Architectural Aluminium Systems is the largest British, privately owned aluminium systems company in Europe. Comar designs, extrudes and distributes over 700 integrated profiles to a nationwide approved fabricator network for use in aluminium ground floor treatment, window, door and curtain walling applications. Comar has built its reputation on delivery; over £5M of mill, white polyester powder coating, silver, bronze and anodised profiles are kept in stock. This means that 99% of orders are fulfilled by our customers' weekly delivery.

Alu-Timber - Merging Material Solutions. Creating sustainable, energy efficient buildings is a cornerstone of design.



Alu-Timber, a range of aluminium/timber windows, doors and framing, that combines sustainably grown FSC or PEFC timbers with 100% recyclable aluminium. Alu-Timber gives the specifier benefits: low U-values to achieve current legislation as well as reassurance for the client that the facade will last, with minimal maintenance.

**Comar Duco**  
Comar-Duco produce market leading ventilation and sun control products that continually evolve to meet the latest demands that building regulations command. This comprehensive solution to provide single source aluminium facades, with ventilation and solar shading, incorporates Window Ventilation, including acoustic ventilation, Architectural Louvres, Continuous Louvre Walls and Solar Shading.

**Axim**  
As part of the The Parkside Group, Axim supply a full range of architectural aluminium door hardware including: concealed transom closers, floor springs, surface mounted closers, flush bolts, panic exit devices, handles, letter plates and other ancillary items.

**RIBA CPD Provider**  
The Parkside Group provides RIBA assessed CPD seminars to architects and specifiers throughout the UK. Please contact us for further details.

**Nationwide Architectural Specification Team**  
Comar Architectural Aluminium Systems have a nationwide team of architectural advisors who specialise in providing architects and specifiers with project support and NBS specifications. Fabricators and installers are supported by a team of Territory Managers.



GROUND FLOOR TREATMENT	
<b>COMAR 1</b>	Single Glazed GFT
<b>COMAR 3</b>	Double Glazed GFT
<b>COMAR 4</b>	Single Glazed GFT
<b>COMAR 8</b>	Fin/Bead GFT
CURTAIN WALLING	
<b>COMAR 6</b>	Curtain Walling, Stick Build & Ladder Frame, Square Cut & Step Cut.
<b>COMAR 6</b>	EFT Structural Glazing 2 & 4 sided
DOORS	
<b>COMAR 7</b>	Doors, Folding, Sliding, Swing & Polyamide Rebated.
WINDOWS	
<b>COMAR 5P.i</b>	Windows, 55mm, 60mm & 75mm Polyamide insulation.
WINDOW WALLING	
<b>COMAR 9P.i</b>	High Performance Window, Doors & Framing.

The Parkside Group Ltd.,  
Unit 5, The Willow Centre,  
17 Willow Lane, Mitcham, Surrey,  
CR4 4NX.

Tel: 0208 685 9685  
Fax: 0208 685 9696  
Email: [projects@parksidegroup.co.uk](mailto:projects@parksidegroup.co.uk)  
[www.parksidegroup.co.uk](http://www.parksidegroup.co.uk)

