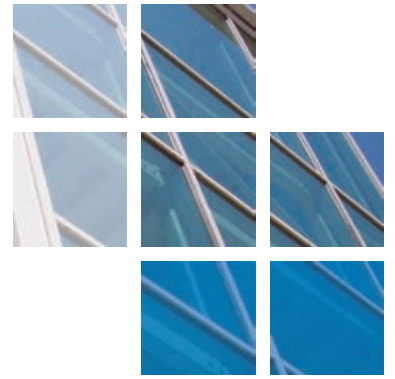




comar

ARCHITECTURAL ALUMINIUM SYSTEMS



Cooper Mini/BMW Dealership, Surrey.



Comar Architectural Aluminium Systems, with their approved fabricator Project Aluminium Ltd., completed a new Cooper BMW/Mini premises in Thames Ditton, Surrey. The design brief demanded the dealership provide high quality facilities to include a sales area, offices and customer services whilst demonstrating strong representation of the Cooper brand.

For the sleek modern façade, Comar 6 ladder frame curtain walling was specified. Comar 6 curtain walling is a versatile thermally efficient system designed to integrate panels and glass of different widths into the façade with special profiles to integrate opening vents and doors. The design of Comar 6 makes it ideal for complex faceted curtain walls as well as sheer glazed façades. Comar 6 offers a slim 50mm sight line with a multitude of transoms and mullions to cater for all deflection loads and grid centres.

In a busy commercial environment, Comar 7 commercial door sets are a natural choice. Not only are they available in swing, pivot, sliding, auto-sliding and sliding folding, they have been designed specifically for public applications where high traffic solutions are required. A variety of doors were hung directly into Comar 6 and these entrance doors were also required to comply with DDA regulations.

Comar 5P.i is a Polyamide Insulated (P.i) window system that provides exceptional thermal performance in a market where energy efficient designs and meeting the demands of the latest building regulations are paramount. From fifteen basic Comar 5Pi profiles, all window configurations, such as casement, top swing reversible, pivot, tilt and turn and sliding can be manufactured. All aluminium systems were finished in a Matt Grey RAL 7012 polyester powder coating.

All Comar approved fabricators are required to have the technical expertise to attend pre-site meetings and provide detailing. Project Aluminium Ltd., liaised closely with the specifiers to provide design advice and detailing which ensured the project ran smoothly and met site deadlines.

| PROJECT DETAILS | |
|-----------------|--|
| Architects | MDG Architects, Warwickshire |
| Fabricator | Project Aluminium |
| Main Contractor | Square One Construction Ltd |
| Project Value | £52,000 |
| System Used | Comar 1, 5P.i, 6 & 7 (Swing/Slider & Auto) |
| Location | Thames Ditton, Surrey |



Cooper Mini/BMW Dealership, Surrey.

The Parkside Group incorporates Comar Architectural Aluminium Systems, Alu-Timber, an aluminium/timber composite system of windows, doors and framing, Axim Architectural Hardware and Duco ventilation and sun control.

This provides a unique opportunity for specifiers and fabricators to rely on a single source for building envelope and integrated systems.

Comar
Comar Architectural Aluminium Systems is the largest British, privately owned aluminium systems company in Europe. Comar designs, extrudes and distributes over 700 integrated profiles to a nationwide approved fabricator network for use in aluminium ground floor treatment, window, door and curtain walling applications. Comar has built its reputation on delivery; over £5M of mill, white polyester powder coating, silver, bronze and anodised profiles are kept in stock. This means that 99% of orders are fulfilled by our customers' weekly delivery.

Alu-Timber - Merging Material Solutions. Creating sustainable, energy efficient buildings is a cornerstone of design.



Alu-Timber, a range of aluminium/timber windows, doors and framing, that combines sustainably grown FSC or PEFC timbers with 100% recyclable aluminium. Alu-Timber gives the specifier benefits: low U-values to achieve current legislation as well as reassurance for the client that the facade will last, with minimal maintenance.

Comar Duco
Comar-Duco produce market leading ventilation and sun control products that continually evolve to meet the latest demands that building regulations command. This comprehensive solution to provide single source aluminium facades, with ventilation and solar shading, incorporates Window Ventilation, including acoustic ventilation, Architectural Louvres, Continuous Louvre Walls and Solar Shading.

Axim
As part of the The Parkside Group, Axim supply a full range of architectural aluminium door hardware including: concealed transom closers, floor springs, surface mounted closers, flush bolts, panic exit devices, handles, letter plates and other ancillary items.

RIBA CPD Provider
The Parkside Group provides RIBA assessed CPD seminars to architects and specifiers throughout the UK. Please contact us for further details.

Nationwide Architectural Specification Team
Comar Architectural Aluminium Systems have a nationwide team of architectural advisors who specialise in providing architects and specifiers with project support and NBS specifications. Fabricators and installers are supported by a team of Territory Managers.



| GROUND FLOOR TREATMENT | |
|------------------------|---|
| COMAR 1 | Single Glazed GFT |
| COMAR 3 | Double Glazed GFT |
| COMAR 4 | Single Glazed GFT |
| COMAR 8 | Fin/Bead GFT |
| CURTAIN WALLING | |
| COMAR 6 | Curtain Walling, Stick Build & Ladder Frame, Square Cut & Step Cut. |
| COMAR 6 | EFT Structural Glazing 2 & 4 sided |
| DOORS | |
| COMAR 7 | Doors, Folding, Sliding, Swing & Polyamide Rebated. |
| WINDOWS | |
| COMAR 5 | Windows, 45mm, 50mm, 55mm, 60mm & 75mm Polyamide. |
| WINDOW WALLING | |
| COMAR 2 | Feature Wall T.B. Window Walling, Thermally Broken. |
| COMAR 9 | High Performance Window, Doors & Framing |

The Parkside Group Ltd.,
Unit 5, The Willow Centre,
17 Willow Lane, Mitcham,
CR4 4NX.

Tel: 0208 685 9685
Fax: 0208 685 9696
Email: projects@parksidegroup.co.uk
www.parksidegroup.co.uk

