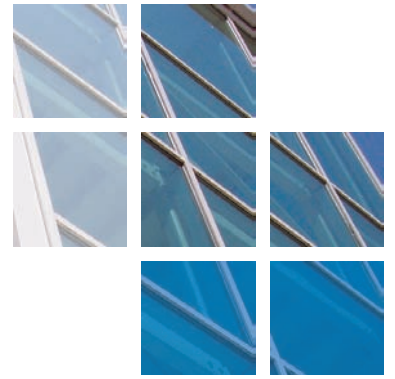




comar

ARCHITECTURAL ALUMINIUM SYSTEMS



Kings Point Office Complex, Oldham .



Comar Architectural Aluminium Systems, with their approved fabricator K2 Aluminium Systems Ltd., supplied the Comar 6EFT Curtain Walling and Comar 7P.i Doors for a new 5 storey office complex located on the King Street Roundabout in Oldham, near Manchester. This complex is in three distinct parts, with the first block comprising of 4 storey all 'glass' elevations and matching ground floor screens and entrance assembly.

Comar 6EFT 4sided SG was used, creating a continuous glass to glass perspective. Comar 6EFT 4sided SG was selected due to the extensive range of profiles that caters for large structurally glazed panes. The glazing was challenging, due to the large size of most of the units, and specialised equipment had to be used to lower each unit into place with the units weighing in at 288kg. The DGU's were designed with a Pilkington Suncool outer pane, an argon filled spacer and a heat soaked 10mm toughened inner pane for barrier load protection. The glazing also included Suncool 'Green' and this was randomly interspaced between clear units. As the majority of the units were 3200mm x 2250mm, the glass had to be specially ordered from Germany. K2 also designed and installed the large flashing detail feature between floors, again to create an uninterrupted linear perspective.

The centre portion of this building has a rain screen facade, with Comar 7 auto swing disabled access door, and a revolving entrance door. The final block is brick built with punched Comar 5Pi fixed lights randomly located floor by floor, with matching flashing detail.

All Comar approved fabricators are required to have the technical expertise to attend pre-site meetings and provide detailing. K2 Aluminium Systems Ltd liaised closely with the specifiers to provide design advice and detailing which ensured the project ran smoothly and met site deadlines.

PROJECT DETAILS

Architects
Sheppard Robson & AEW Architects

Fabricator
K2 Aluminium Systems Ltd

Main Contractor
Caddick Construction Ltd

Project Value
£600K

Systems Used
Comar 6EFT, Comar 7P.i. Doors

Location
King Street Junction, Oldham,
Lancashire.



Kings Point Office Complex, Oldham .

The Parkside Group incorporates Comar Architectural Aluminium Systems, Alu-Timber, an aluminium/timber composite system of windows, doors and framing, Axim Architectural Hardware and Duco ventilation and sun control.

This provides a unique opportunity for specifiers and fabricators to rely on a single source for building envelope and integrated systems.

Comar
Comar Architectural Aluminium Systems is the largest British, privately owned aluminium systems company in Europe. Comar designs, extrudes and distributes over 700 integrated profiles to a nationwide approved fabricator network for use in aluminium ground floor treatment, window, door and curtain walling applications. Comar has built its reputation on delivery; over £5M of mill, white polyester powder coating, silver, bronze and anodised profiles are kept in stock. This means that 99% of orders are fulfilled by our customers' weekly delivery.

Alu-Timber - Merging Material Solutions. Creating sustainable, energy efficient buildings is a cornerstone of design.



Alu-Timber, a range of aluminium/timber windows, doors and framing, that combines sustainably grown FSC or PEFC timbers with 100% recyclable aluminium. Alu-Timber gives the specifier benefits: low U-values to achieve current legislation as well as reassurance for the client that the facade will last, with minimal maintenance.

Comar Duco
Comar-Duco produce market leading ventilation and sun control products that continually evolve to meet the latest demands that building regulations command. This comprehensive solution to provide single source aluminium facades, with ventilation and solar shading, incorporates Window Ventilation, including acoustic ventilation, Architectural Louvres, Continuous Louvre Walls and Solar Shading.

Axim
As part of the The Parkside Group, Axim supply a full range of architectural aluminium door hardware including: concealed transom closers, floor springs, surface mounted closers, flush bolts, panic exit devices, handles, letter plates and other ancillary items.

RIBA CPD Provider
The Parkside Group provides RIBA assessed CPD seminars to architects and specifiers throughout the UK. Please contact us for further details.

Nationwide Architectural Specification Team
Comar Architectural Aluminium Systems have a nationwide team of architectural advisors who specialise in providing architects and specifiers with project support and NBS specifications. Fabricators and installers are supported by a team of Territory Managers.



GROUND FLOOR TREATMENT	
COMAR 1	Single Glazed GFT
COMAR 3	Double Glazed GFT
COMAR 4	Single Glazed GFT
COMAR 8	Fin/Bead GFT
CURTAIN WALLING	
COMAR 6	Curtain Walling, Stick Build & Ladder Frame, Square Cut & Step Cut.
COMAR 6	EFT Structural Glazing 2 & 4 sided
DOORS	
COMAR 7	Doors, Folding, Sliding, Swing & Polyamide Rebated.
WINDOWS	
COMAR 5	Windows, 45mm, 50mm, 55mm, 60mm & 75mm Polyamide.
WINDOW WALLING	
COMAR 2	Feature Wall T.B. Window Walling, Thermally Broken.
COMAR 9	High Performance Window, Doors & Framing

The Parkside Group Ltd.,
Unit 5, The Willow Centre,
17 Willow Lane, Mitcham,
CR4 4NX.

Tel: 0208 685 9685
Fax: 0208 685 9696
Email: projects@parksidegroup.co.uk
www.parksidegroup.co.uk

