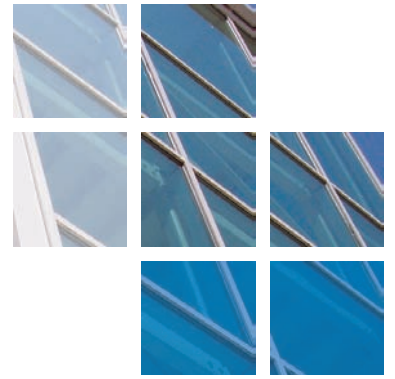




# comar

ARCHITECTURAL ALUMINIUM SYSTEMS



## Holy Cross Church, Harlow.



Comar Architectural Aluminium Systems, with their approved fabricator Anglia Fixing Limited, supplied Comar 2 Window Walling and Comar 5P.i Windows for the glazing refurbishment of the Holy Cross Church in Harlow, Essex.

This church required complete window replacement and the project brief was to include a feature 'cross' to the lower portion of the centre window unit in a distinctive contrast colour. Comar 2 window walling was used with high span mullions to create the large glazed feature at the cable end with thermally broken sections. A cross was formed in a cream contrasting polyester powder coat finish from Comar 2 mid-rail sections CS 183 and CS 186 with all the other framing finished in a dark brown.

Comar 5P.i top hung casement windows were hung on stainless steel projecting friction hinges and these were fitted with folding cam openers in a satin anodised finish for both pole and hand operation. The windows were internally beaded with 28.8mm double glazed units, using laminated safety glass to the inner pane, cavity filled Argon gas and a 6.4mm laminated clear float safety glass to the outer pane.

All Comar approved fabricators are required to have the technical expertise to attend pre-site meetings and provide detailing. Anglia Fixing Limited liaised closely with the specifiers to provide design advice and detailing which ensured the project ran smoothly and met site deadlines.

### PROJECT DETAILS

Architects  
Munday & Cramer Architectural &  
Building Surveyors Ltd.

Fabricator  
Anglia Fixing Ltd.

Main Contractor  
Farmer & Shelvis

Project Value  
£21,000

System Used  
Comar 2 & 5P.i

Location  
Harlow, Essex.



# Holy Cross Church, Harlow.

The Parkside Group incorporates Comar Architectural Aluminium Systems, Alu-Timber, an aluminium/timber composite system of windows, doors and framing, Axim Architectural Hardware and Duco ventilation and sun control.

This provides a unique opportunity for specifiers and fabricators to rely on a single source for building envelope and integrated systems.

**Comar**  
Comar Architectural Aluminium Systems is the largest British, privately owned aluminium systems company in Europe. Comar designs, extrudes and distributes over 700 integrated profiles to a nationwide approved fabricator network for use in aluminium ground floor treatment, window, door and curtain walling applications. Comar has built its reputation on delivery; over £5M of mill, white polyester powder coating, silver, bronze and anodised profiles are kept in stock. This means that 99% of orders are fulfilled by our customers' weekly delivery.

Alu-Timber - Merging Material Solutions. Creating sustainable, energy efficient buildings is a cornerstone of design.



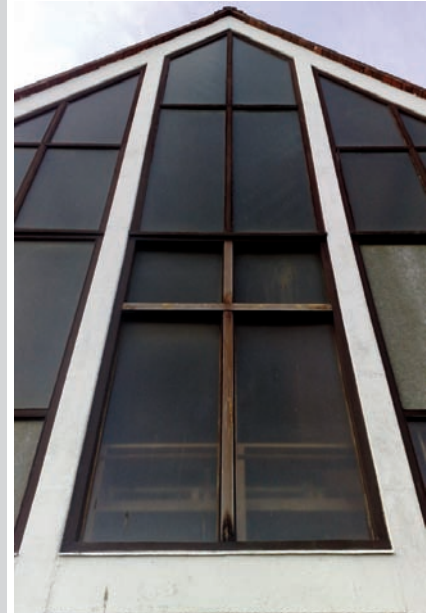
Alu-Timber, a range of aluminium/timber windows, doors and framing, that combines sustainably grown FSC or PEFC timbers with 100% recyclable aluminium. Alu-Timber gives the specifier benefits: low U-values to achieve current legislation as well as reassurance for the client that the facade will last, with minimal maintenance.

**Comar Duco**  
Comar-Duco produce market leading ventilation and sun control products that continually evolve to meet the latest demands that building regulations command. This comprehensive solution to provide single source aluminium facades, with ventilation and solar shading, incorporates Window Ventilation, including acoustic ventilation, Architectural Louvres, Continuous Louvre Walls and Solar Shading.

**Axim**  
As part of the The Parkside Group, Axim supply a full range of architectural aluminium door hardware including: concealed transom closers, floor springs, surface mounted closers, flush bolts, panic exit devices, handles, letter plates and other ancillary items.

**RIBA CPD Provider**  
The Parkside Group provides RIBA assessed CPD seminars to architects and specifiers throughout the UK. Please contact us for further details.

**Nationwide Architectural Specification Team**  
Comar Architectural Aluminium Systems have a nationwide team of architectural advisors who specialise in providing architects and specifiers with project support and NBS specifications. Fabricators and installers are supported by a team of Territory Managers.



GROUND FLOOR TREATMENT	
<b>COMAR 1</b>	Single Glazed GFT
<b>COMAR 3</b>	Double Glazed GFT
<b>COMAR 4</b>	Single Glazed GFT
<b>COMAR 8</b>	Fin/Bead GFT
CURTAIN WALLING	
<b>COMAR 6</b>	Curtain Walling, Stick Build & Ladder Frame, Square Cut & Step Cut.
<b>COMAR 6</b>	EFT Structural Glazing 2 & 4 sided
DOORS	
<b>COMAR 7</b>	Doors, Folding, Sliding, Swing & Polyamide Rebated.
WINDOWS	
<b>COMAR 5</b>	Windows, 45mm, 50mm, 55mm, 60mm & 75mm Polyamide.
WINDOW WALLING	
<b>COMAR 2</b>	Feature Wall T.B. Window Walling, Thermally Broken.
<b>COMAR 9</b>	High Performance Window, Doors & Framing

The Parkside Group Ltd.,  
Unit 5, The Willow Centre,  
17 Willow Lane, Mitcham,  
CR4 4NX.

Tel: 0208 685 9685  
Fax: 0208 685 9696  
Email: [projects@parksidegroup.co.uk](mailto:projects@parksidegroup.co.uk)  
[www.parksidegroup.co.uk](http://www.parksidegroup.co.uk)

