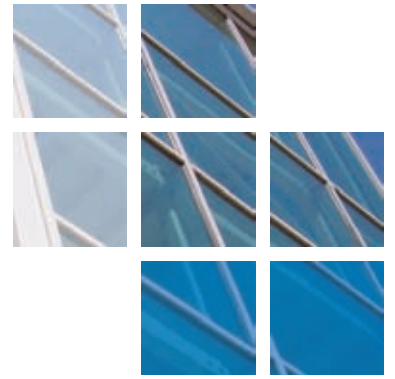




# comar

ARCHITECTURAL ALUMINIUM SYSTEMS



## Harborne Pool & Leisure Centre, Birmingham.



Comar Architectural Aluminium Systems, with their approved fabricator K2 Aluminium Systems, recently completed the £12M showcase Harborne Pool & Leisure Centre in Birmingham which has achieved a BREEAM rating of "excellent". To achieve this, the building included features such as resourcing sustainable materials, green roofs, water saving measures, solar energy and natural daylight spaces. This state of the art facility is unique in Birmingham as it is the first facility to be operated by a leisure management company on behalf of Birmingham City Council. The new centre includes a 25M, 6 lane, swimming pool, learner pool, community room, group and adult fitness studio and interactive children's gym.

Comar 6 curtain walling is a versatile thermally efficient system designed to integrate panels and glass of different widths into the façade with special profiles to include opening vents and doors. The design of Comar 6 makes it ideal for complex faceted curtain walls as well as sheer glazed facades. Comar 6 was selected due to its slim 50mm profiles which maximised the glazed area for natural day lighting. Comar 5P.i windows and Comar 7P.i doors were selected. Polyamide Insulated (P.i) window and door systems provide exceptional thermal performance in a market where energy efficient designs and meeting the demands of the latest building regulations are paramount. In a busy leisure environment, Comar 7 commercial door sets are a natural choice. Not only are they available in swing, pivot, sliding, auto-sliding and sliding folding, they have been designed specifically for applications where high traffic solutions are required. For safety, Comar 7 doors were fitted with rounded Anti-finger trap stiles, Axim soft touch Panic Exit Devices and Axim Concealed Transom Closers which were hung directly from Comar 6 and complied with the Disability & Equality Act 2010. All aluminium systems were finished in an 80micron chlorine resistant polyester powder coat.

All Comar approved fabricators are required to have the technical expertise to attend pre-site meetings and provide detailing. K2 Aluminium Systems liaised closely with the specifiers to provide design advice and detailing which ensured the project ran smoothly and met site deadlines.

### PROJECT DETAILS

Architects  
Saunders Boston Architects,  
Cambridge

Fabricator  
K2 Aluminium

Main Contractor  
Wates Construction

Project Value  
£110K

System Used  
Comar 5P.i, 6 (Step Cut), & 7P.i

Location  
Birmingham



# Harborne Pool & Leisure Centre, Birmingham.

The Parkside Group incorporates Comar Architectural Aluminium Systems, Alu-Timber, an aluminium/timber composite system of windows, doors and framing, Axim Architectural Hardware and Duco ventilation and sun control.

This provides a unique opportunity for specifiers and fabricators to rely on a single source for building envelope and integrated systems.

**Comar**  
Comar Architectural Aluminium Systems is the largest British, privately owned aluminium systems company in Europe. Comar designs, extrudes and distributes over 700 integrated profiles to a nationwide approved fabricator network for use in aluminium ground floor treatment, window, door and curtain walling applications. Comar has built its reputation on delivery; over £5M of mill, white polyester powder coating, silver, bronze and anodised profiles are kept in stock. This means that 99% of orders are fulfilled by our customers' weekly delivery.

Alu-Timber - Merging Material Solutions. Creating sustainable, energy efficient buildings is a cornerstone of design.



Alu-Timber, a range of aluminium/timber windows, doors and framing, that combines sustainably grown FSC or PEFC timbers with 100% recyclable aluminium. Alu-Timber gives the specifier benefits: low U-values to achieve current legislation as well as reassurance for the client that the facade will last, with minimal maintenance.

**Comar Duco**  
Comar-Duco produce market leading ventilation and sun control products that continually evolve to meet the latest demands that building regulations command. This comprehensive solution to provide single source aluminium facades, with ventilation and solar shading, incorporates Window Ventilation, including acoustic ventilation, Architectural Louvres, Continuous Louvre Walls and Solar Shading.

**Axim**  
As part of the The Parkside Group, Axim supply a full range of architectural aluminium door hardware including: concealed transom closers, floor springs, surface mounted closers, flush bolts, panic exit devices, handles, letter plates and other ancillary items.

**RIBA CPD Provider**  
The Parkside Group provides RIBA assessed CPD seminars to architects and specifiers throughout the UK. Please contact us for further details.

**Nationwide Architectural Specification Team**  
Comar Architectural Aluminium Systems have a nationwide team of architectural advisors who specialise in providing architects and specifiers with project support and NBS specifications. Fabricators and installers are supported by a team of Territory Managers.



GROUND FLOOR TREATMENT	
<b>COMAR 1</b>	Single Glazed GFT
<b>COMAR 3</b>	Double Glazed GFT
<b>COMAR 4</b>	Single Glazed GFT
<b>COMAR 8</b>	Fin/Bead GFT
CURTAIN WALLING	
<b>COMAR 6</b>	Curtain Walling, Stick Build & Ladder Frame, Square Cut & Step Cut.
<b>COMAR 6</b>	EFT Structural Glazing 2 & 4 sided
DOORS	
<b>COMAR 7</b>	Doors, Folding, Sliding, Swing & Polyamide Rebated.
WINDOWS	
<b>COMAR 5</b>	Windows, 45mm, 50mm, 55mm, 60mm & 75mm Polyamide.
WINDOW WALLING	
<b>COMAR 2</b>	Feature Wall T.B. Window Walling, Thermally Broken.
<b>COMAR 9</b>	High Performance Window, Doors & Framing

The Parkside Group Ltd.,  
Unit 5, The Willow Centre,  
17 Willow Lane, Mitcham, Surrey,  
CR4 4NX.

Tel: 0208 685 9685  
Fax: 0208 685 9696  
Email: [projects@parksidegroup.co.uk](mailto:projects@parksidegroup.co.uk)  
[www.parksidegroup.co.uk](http://www.parksidegroup.co.uk)

