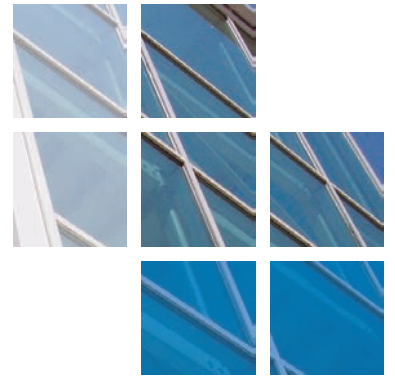




comar

ARCHITECTURAL ALUMINIUM SYSTEMS



Cuckoo Farm Light Industrial Estate



Comar Architectural Aluminium Systems, with their approved fabricator Anglia Fixing Limited, supplied Comar 5P.i thermally broken windows, Comar 6EFT curtain walling and Comar 7 doors for Phase One of a new build light industrial estate in Colchester, Essex. Anglia Fixing Limited have a good relationship with the developer and were able to reassure them that this project could be completed within the restraints of the budget and that Comar 6EFT Curtain Walling system complied with the latest CWCT standards.

Comar 5P.i top hung casement inserts were manufactured from polyamide thermally broken sections hung on heavy duty stainless steel friction hinges with a restrictor device to limit the opening to 100mm, fitted with push button key locking cockspr handles. Trickle vents were incorporated through a Comar 5P.i header bar which provided free airflow per vent of 4000mm². The windows were internally beaded and glazed with 28mm double glazing units, using laminated safety glass to the inner pane and green anti-sun solar control toughened glass to the outer pane.

Comar 6EFT mullion drained thermally broken curtain walling system in 'stick' construction with drained capping, pressure equalised and drained in accordance with BS6262, was installed to create large areas of natural lighting to the building. Comar 7 Pivot doors provided a 1000mm clear opening to meet DDA requirements. The doors were fitted with concealed overhead door closers with a 90° hold open facility, maximum security hook locks, full height handles and anti-finger trap jamb stilts. All systems were finished in a matt finish Grey RAL 7012, polyester powder coated to BS6496.

All Comar approved fabricators are required to have the technical expertise to attend pre-site meetings and provide detailing. Anglia Fixing Limited liaised closely with the specifiers to provide design advice and detailing which ensured the project ran smoothly and met site deadlines.

PROJECT DETAILS

Architects
Hamilton Architects Masterplanners

Fabricator
Anglia Fixing Ltd.

Main Contractor
Hutton Construction Ltd.

Project Value
£182,000

System Used
Comar 5P.i, 6EFT and 7

Location
Colchester, Essex.



Cuckoo Farm Light Industrial Estate.

The Parkside Group incorporates Comar Architectural Aluminium Systems, Alu-Timber, an aluminium/timber composite system of windows, doors and framing, Axim Architectural Hardware and Duco ventilation and sun control.

This provides a unique opportunity for specifiers and fabricators to rely on a single source for building envelope and integrated systems.

Comar
Comar Architectural Aluminium Systems is the largest British, privately owned aluminium systems company in Europe. Comar designs, extrudes and distributes over 700 integrated profiles to a nationwide approved fabricator network for use in aluminium ground floor treatment, window, door and curtain walling applications. Comar has built its reputation on delivery; over £5M of mill, white polyester powder coating, silver, bronze and anodised profiles are kept in stock. This means that 99% of orders are fulfilled by our customers' weekly delivery.

Alu-Timber - Merging Material Solutions. Creating sustainable, energy efficient buildings is a cornerstone of design.



Alu-Timber, a range of aluminium/timber windows, doors and framing, that combines sustainably grown FSC or PEFC timbers with 100% recyclable aluminium. Alu-Timber gives the specifier benefits: low U-values to achieve current legislation as well as reassurance for the client that the facade will last, with minimal maintenance.

Comar Duco
Comar-Duco produce market leading ventilation and sun control products that continually evolve to meet the latest demands that building regulations command. This comprehensive solution to provide single source aluminium facades, with ventilation and solar shading, incorporates Window Ventilation, including acoustic ventilation, Architectural Louvres, Continuous Louvre Walls and Solar Shading.

Axim
As part of the The Parkside Group, Axim supply a full range of architectural aluminium door hardware including: concealed transom closers, floor springs, surface mounted closers, flush bolts, panic exit devices, handles, letter plates and other ancillary items.

RIBA CPD Provider
The Parkside Group provides RIBA assessed CPD seminars to architects and specifiers throughout the UK. Please contact us for further details.

Nationwide Architectural Specification Team
Comar Architectural Aluminium Systems have a nationwide team of architectural advisors who specialise in providing architects and specifiers with project support and NBS specifications. Fabricators and installers are supported by a team of Territory Managers.



GROUND FLOOR TREATMENT

- COMAR 1** Single Glazed GFT
- COMAR 3** Double Glazed GFT
- COMAR 4** Single Glazed GFT
- COMAR 8** Fin/Bead GFT

CURTAIN WALLING

- COMAR 6** Curtain Walling, Stick Build & Ladder Frame, Square Cut & Step Cut.
- COMAR 6** EFT Structural Glazing 2 & 4 sided

DOORS

- COMAR 7** Doors, Folding, Sliding, Swing & Polyamide Rebated.

WINDOWS

- COMAR 5** Windows, 45mm, 50mm, 55mm, 60mm & 75mm Polyamide.

WINDOW WALLING

- COMAR 2** Feature Wall T.B. Window Walling, Thermally Broken.
- COMAR 9** High Performance Window, Doors & Framing

The Parkside Group Ltd.,
Unit 5, The Willow Centre,
17 Willow Lane, Mitcham, Surrey,
CR4 4NX.

Tel: 0208 685 9685
Fax: 0208 685 9696
Email: projects@parksidegroup.co.uk
www.parksidegroup.co.uk

