

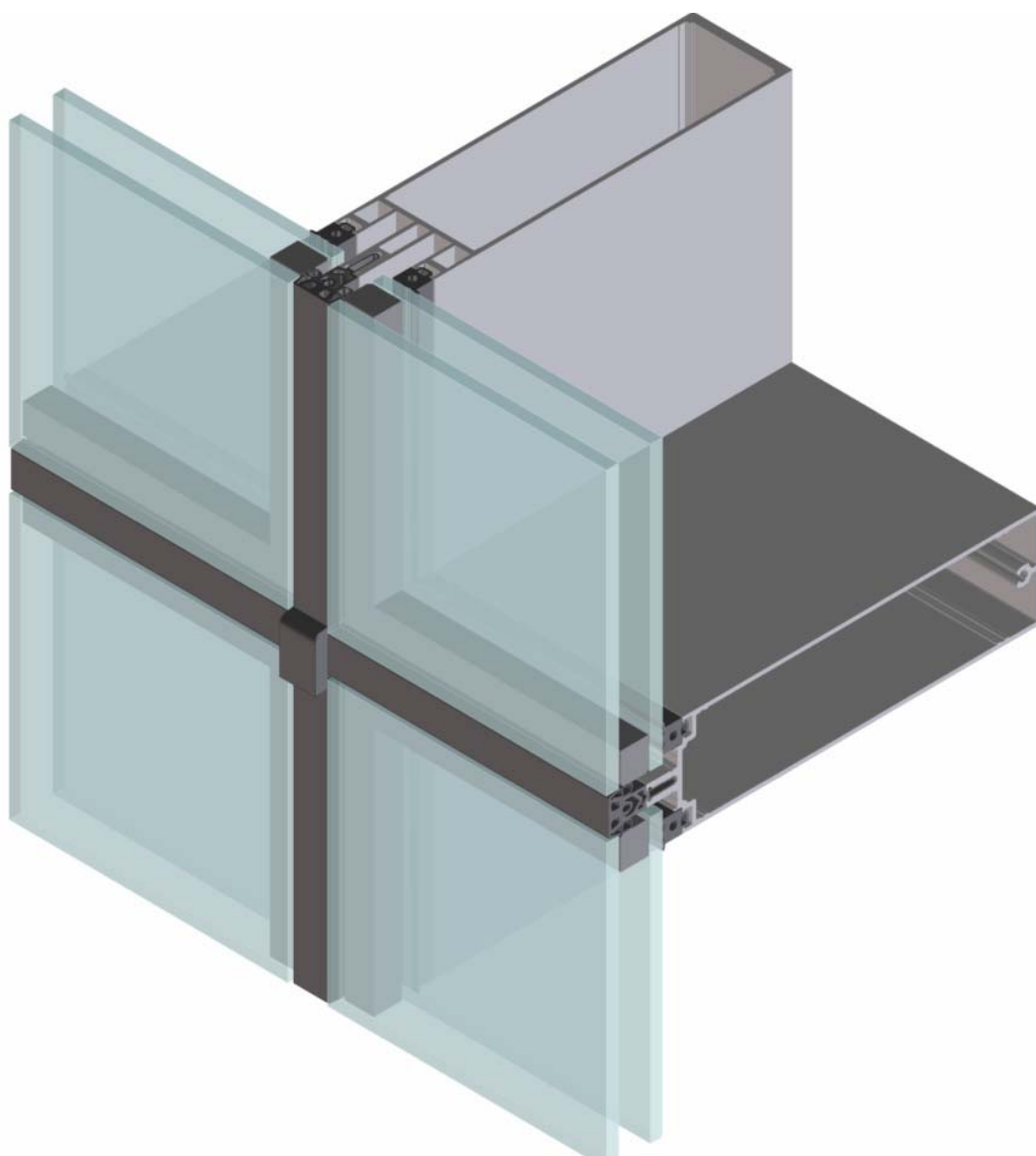
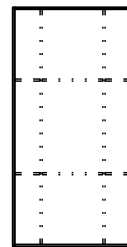
Copyright and ownership of this drawing is vested in EFT,
Euro Facade Systems Ltd, whose prior written consent is required
for its use, reproduction or for publication to any third party.
All other rights reserved.

4sided SG

2

Typical details

Comar 6EFT



Fabricators Guide

Changes reserved
Sous reserve de modifications
Änderungen vorbehalten

Issue: 04
Date :01-14

Introduction

Comar 6 EFT 4 Sided SG

Comar 6 EFT 4 Sided Structural Glazed Curtain Wall System enables the construction of curtain walling, with the benefits of slim sightlines.

This thermally insulated system consists of standard 50 mm profiles, bespoke profiles are available upon request.

Specification Summary

Comar EFT 4sided structural glazing is a mullion drained, thermally broken curtain wall system, with standardised 50 mm mullions and transoms.

The external vertical and horizontal sightline (joint seal) is 20 mm

The joint seal can be made of EPDM, compatible with most silicone sealants or this joint can be made out of silicone sealant.

Glazing

The system is externally glazed. Glazing should conform to the requirements of BS 6262 for thickness, type, wind resistance, safety and security.

Drainage

The system is mullion drained, achieved by meeting the requirements of "ventilated and drained glazing system" as specified in BS 6262

Thermal Insulation

Class 2.1 in accordance with DIN 4108 (2.0-2.8 W/m²K) or EN ISO 10077 - 1

The thermal transmittance (U_f) W/m²K, is depending on the insulator strip, calculated as per EN ISO 10077 - 1.

Comparable with class 2.1 DIN 4108 - 4 Table 3

Sound Insulation

Dependant on the glass specification, generally the curtain wall framing reduces the figure by 2dB (A).

Materials

The system is constructed from extruded aluminium profiles, using alloy 6063 complying to the requirements of BS 1474.

The thermal barrier system is achieved by means of PVC/PP extrusion

Construction

Any instructions regarding the manufacture and installation of the system must be strictly adhered to.

Weathering

Glazing vision strips are made of EPDM conforming to BS 4255 Part 1

Performance / exposure category

The system will achieve the following criteria when manufactured, installed and glazed to EFT recommended procedures, in accordance with CWCT approved testing methods.

Classification

Air permeability:	BS EN 12152 - Class AE 750
Water tightness:	BS EN 12154 - Class RE 750
Wind resistance:	BS EN 13116 - 2400 Pa design - 3600 Pa safety

2400Pa (Pascal's) is dependant upon correct mullion and transom selection to suit span and spacing by project.

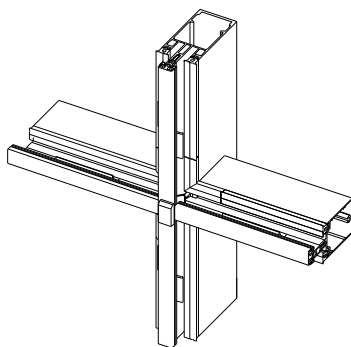
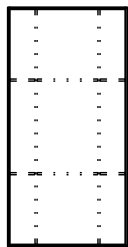
Size limitations

The size limitations of the system depends mainly on the hardware used. Please refer to Comar's Technical Office for advice.

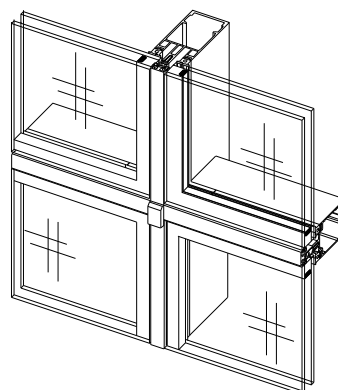
Typical details

2

Comar 6EFT



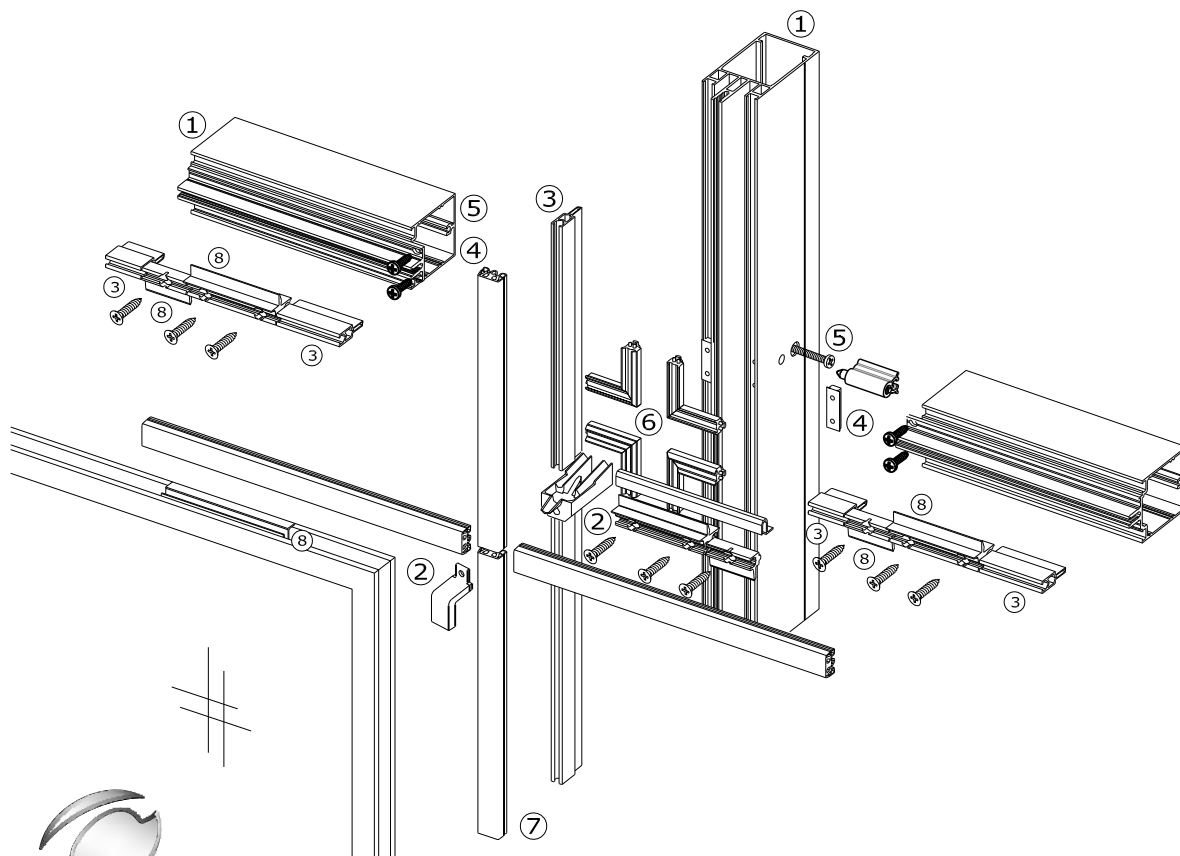
Typical Exploded Detail Four Sided Structural EFT (4 sided SG)



Details:

1. One substructure for all curtain wall types, Fully Capped, 2 sided SGH, 2 sided SGV & 4 sided SG.
2. Controlled drainage system (mullion drained) drainage diverter/cover.
3. Thermally broken.
4. Mullion-Transom step-cut & sealed by EPDM moulding.
5. Ladder (unit) construction or stick build.
6. Moulded EPDM corners available.
7. Continuous pressure plate gasket.
8. Glazing clamping system into DG unit.

Fabrications Guide



comar

ARCHITECTURAL ALUMINIUM SYSTEMS

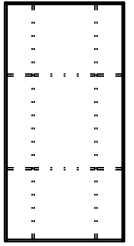
Changes reserved
Sous reserve de modifications
Änderungen vorbehalten

Issue: 04
Date : 01-14

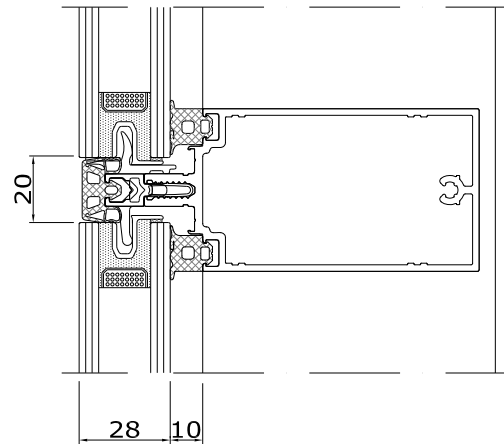
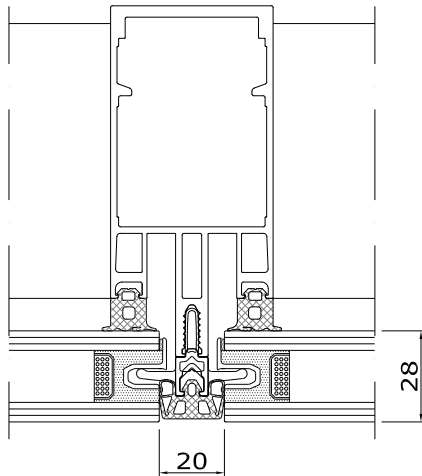
Copyright and ownership of this drawing is vested in EFT,
Euro Facade Systems Ltd, whose prior written consent is required
for its use, reproduction or for publication to any third party.
All other rights reserved. Subject to modifications.

Four sided structural glazing (4sided SG)

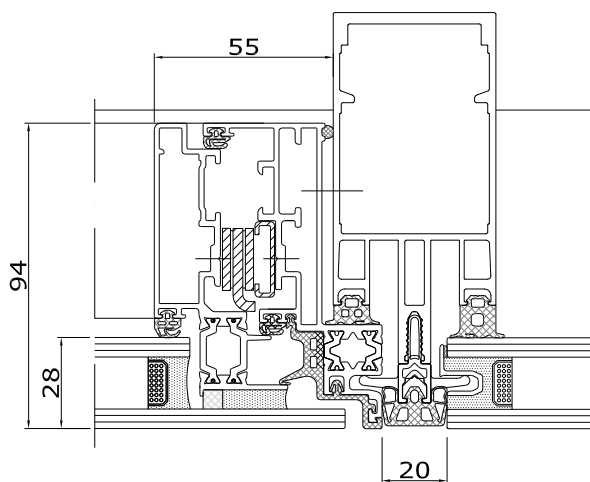
Comar 6EFT



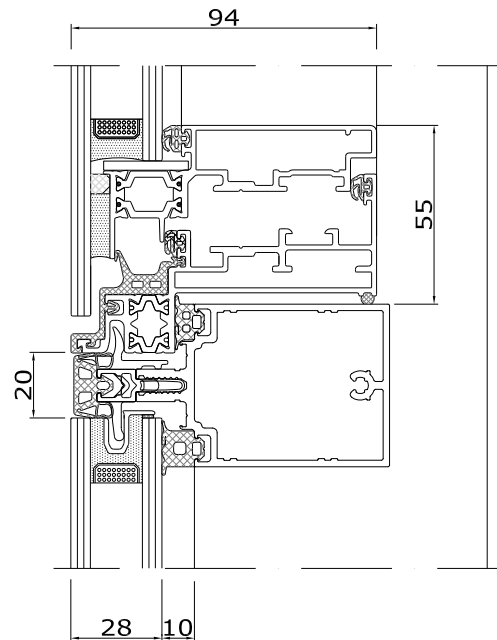
2.56



Including Comar 6EFT Concealed Vent



For concealed vent details, refer to section 8

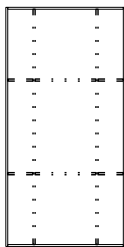


Typical details

2

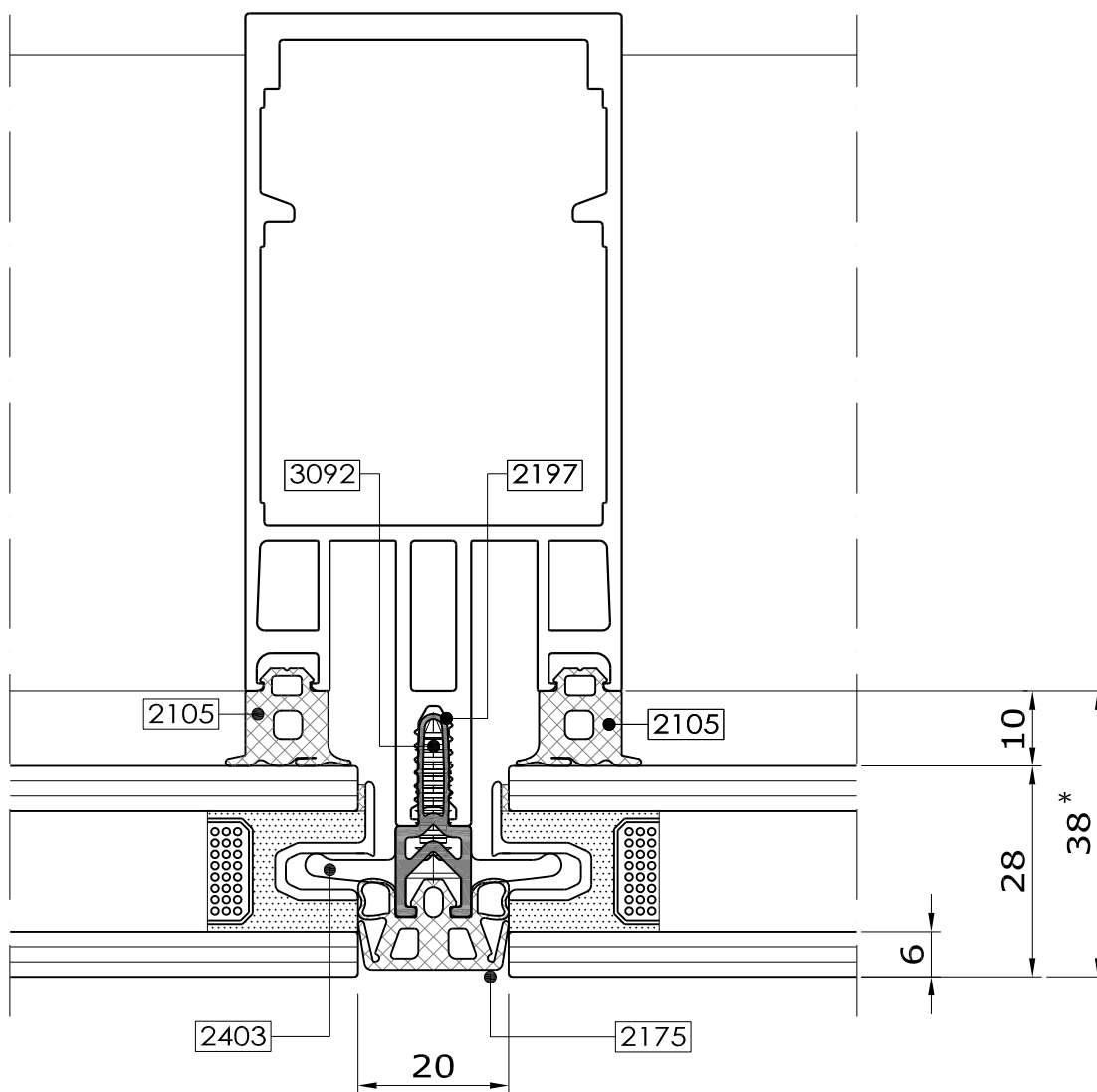
Comar 6EFT

Mullion detail EPDM gasket seal



2.57

Fabricators Guide



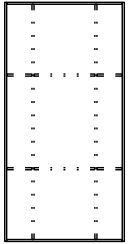
* Refer to Glazing Chart for glazing options

2

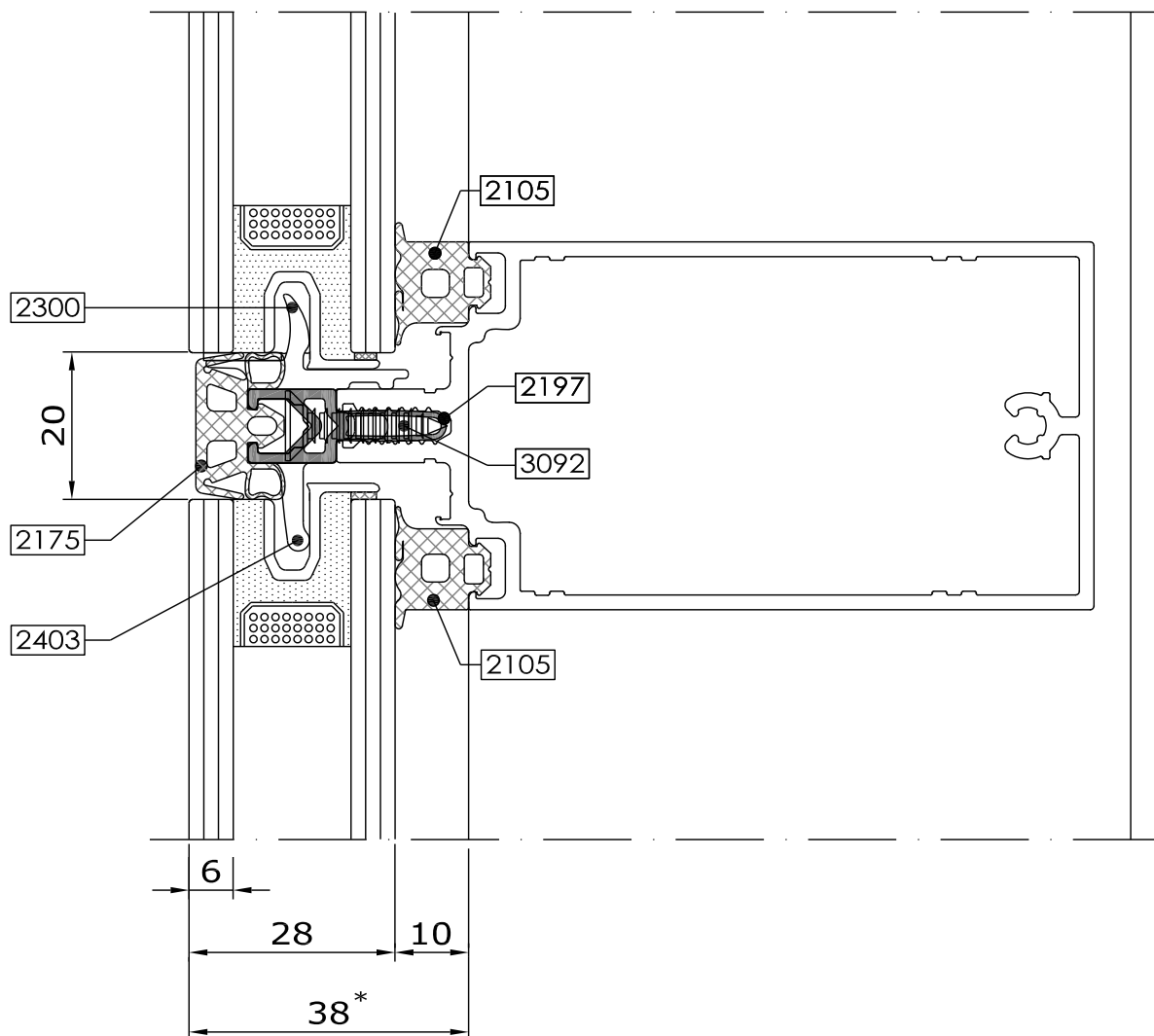
Typical details

Comar 6EFT

Transom detail EPDM gasket seal



2.58



Fabricators Guide

* Refer to Glazing Chart for glazing options

Changes reserved
Sous reserve de modifications
Änderungen vorbehalten

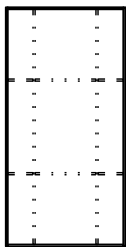
Issue: 04
Date :01-14

Typical details

2

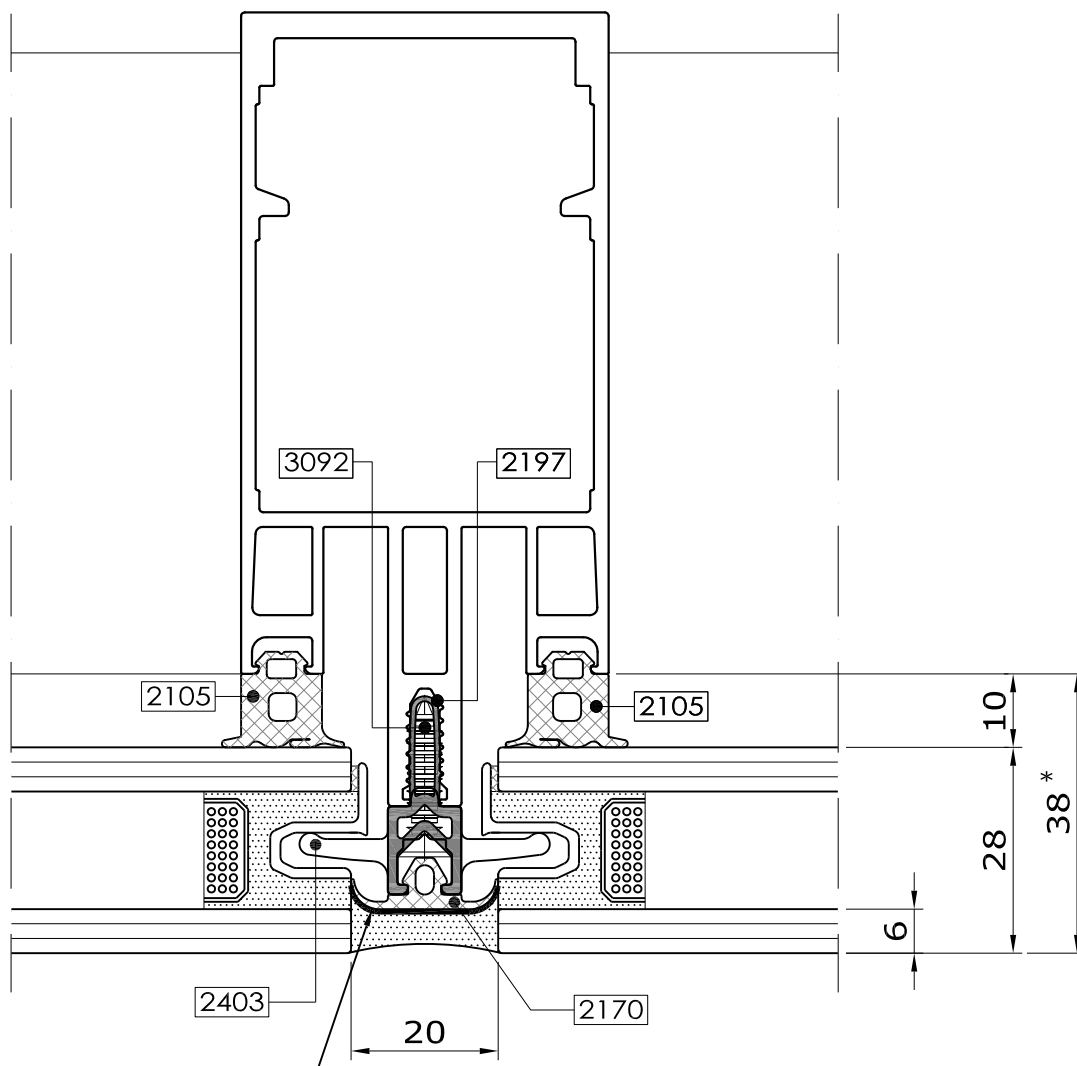
Comar 6EFT

Mullion detail Silicone seal



2.59

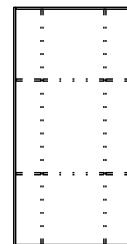
Fabricators Guide



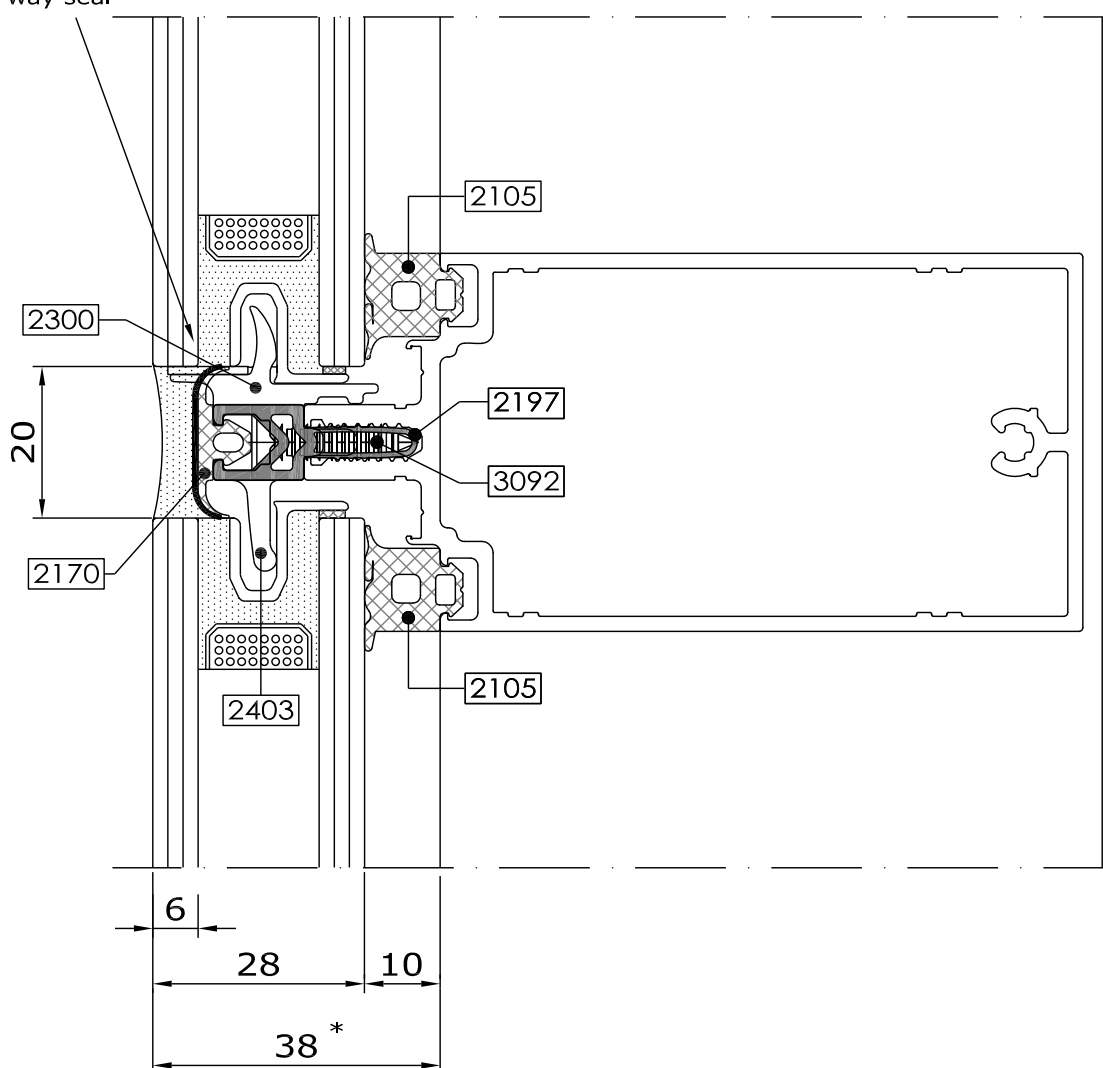
Any edge of gasket that will be exposed to external silicone seal must have bond breaker tape applied to its surface to prevent a three way seal

* Refer to Glazing Chart for glazing options

Transom detail Silicone seal



Any edge of gasket that will be exposed to external silicone seal must have bond breaker tape applied to its surface to prevent a three way seal



* Refer to Glazing Chart for glazing options

Changes reserved
Sous reserve de modifications
Änderungen vorbehalten

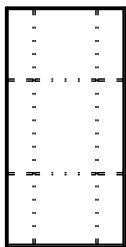
Issue: 04
Date :01-14

Typical details

2

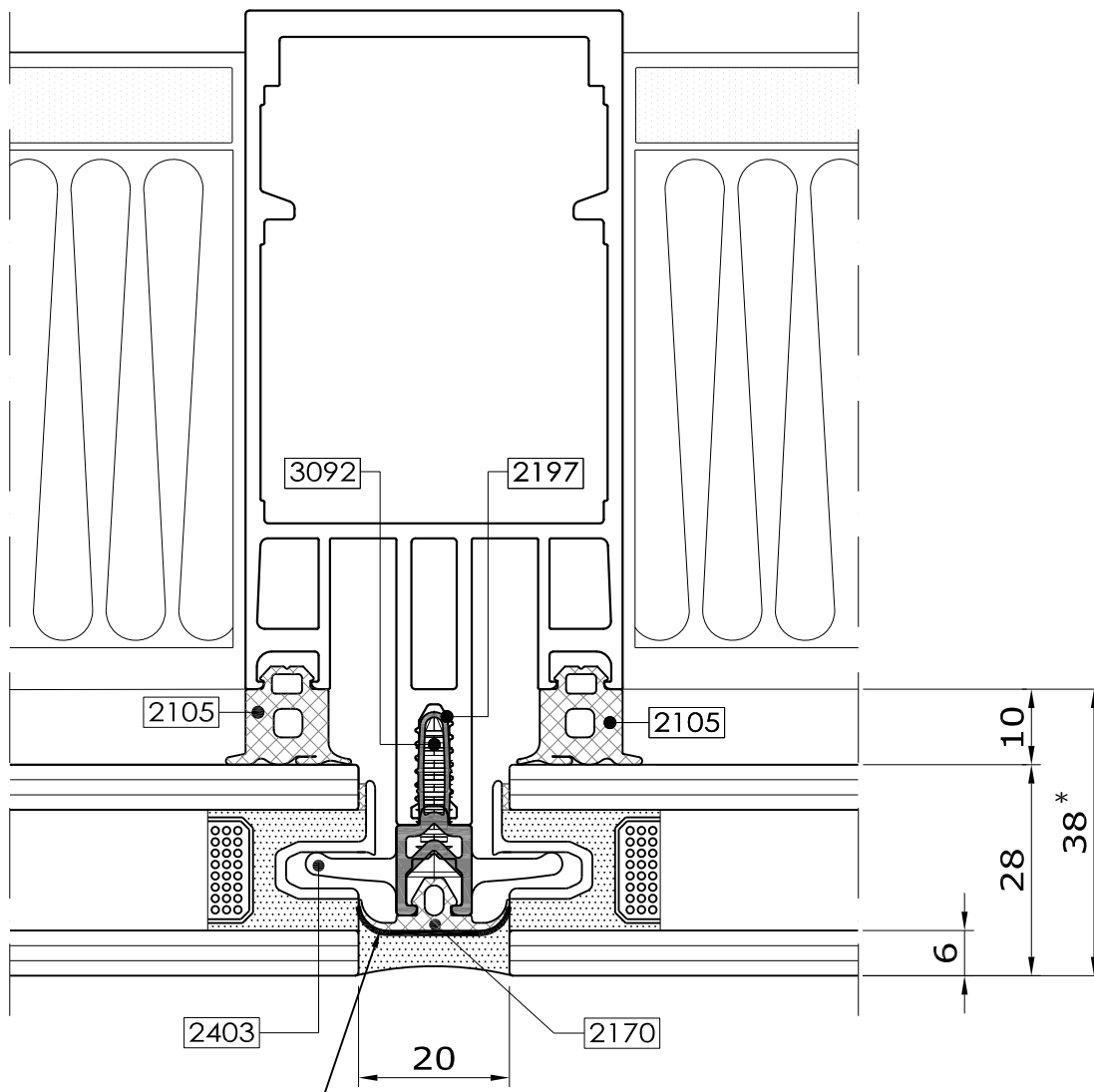
Comar 6EFT

Mullion detail



2.61

Fabricators Guide



Any edge of gasket that will be exposed to external silicone seal must have bond breaker tape applied to its surface to prevent a three way seal

* Refer to Glazing Chart for glazing options



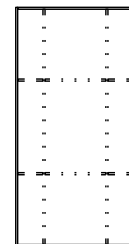
comar

ARCHITECTURAL ALUMINIUM SYSTEMS

Changes reserved
Sous reserve de modifications
Änderungen vorbehalten

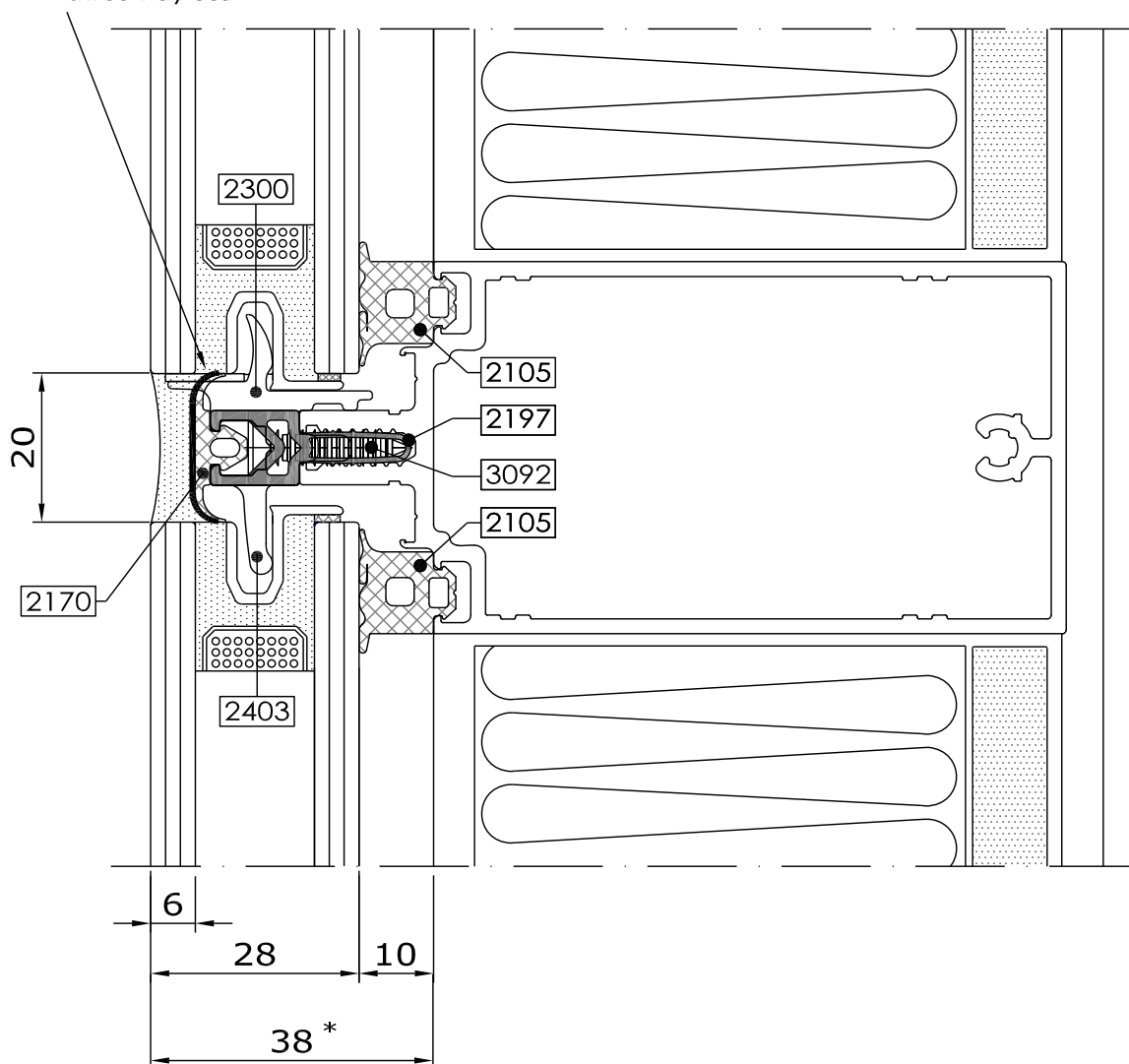
Issue: 04
Date : 01-14

Transom detail



2.62

Any edge of gasket that will be exposed to external silicone seal must have bond breaker tape applied to its surface to prevent a three way seal



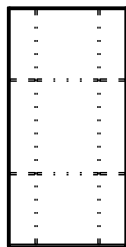
* Refer to Glazing Chart for glazing options

Typical details

2

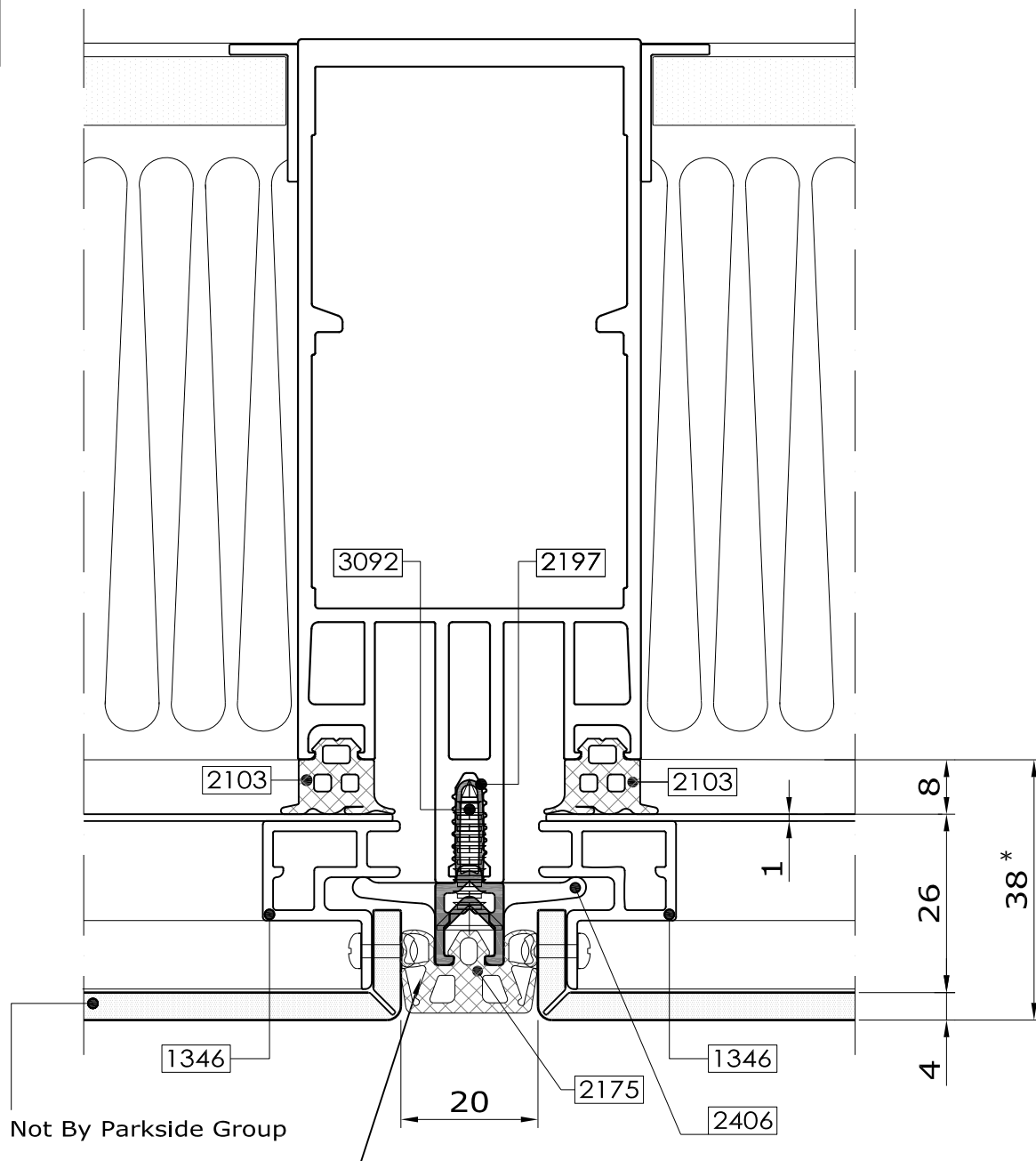
Comar 6EFT

Mullion detail
Panel frame 1346



2.63

Fabricators Guide



Any edge of gasket that will be exposed to external silicone seal must have bond breaker tape applied to its surface to prevent a three way seal

* Refer to Glazing Chart for glazing options



comar

ARCHITECTURAL ALUMINIUM SYSTEMS

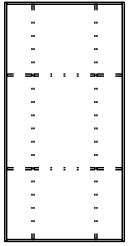
Changes reserved
Sous reserve de modifications
Änderungen vorbehalten

Issue: 04
Date : 01-14

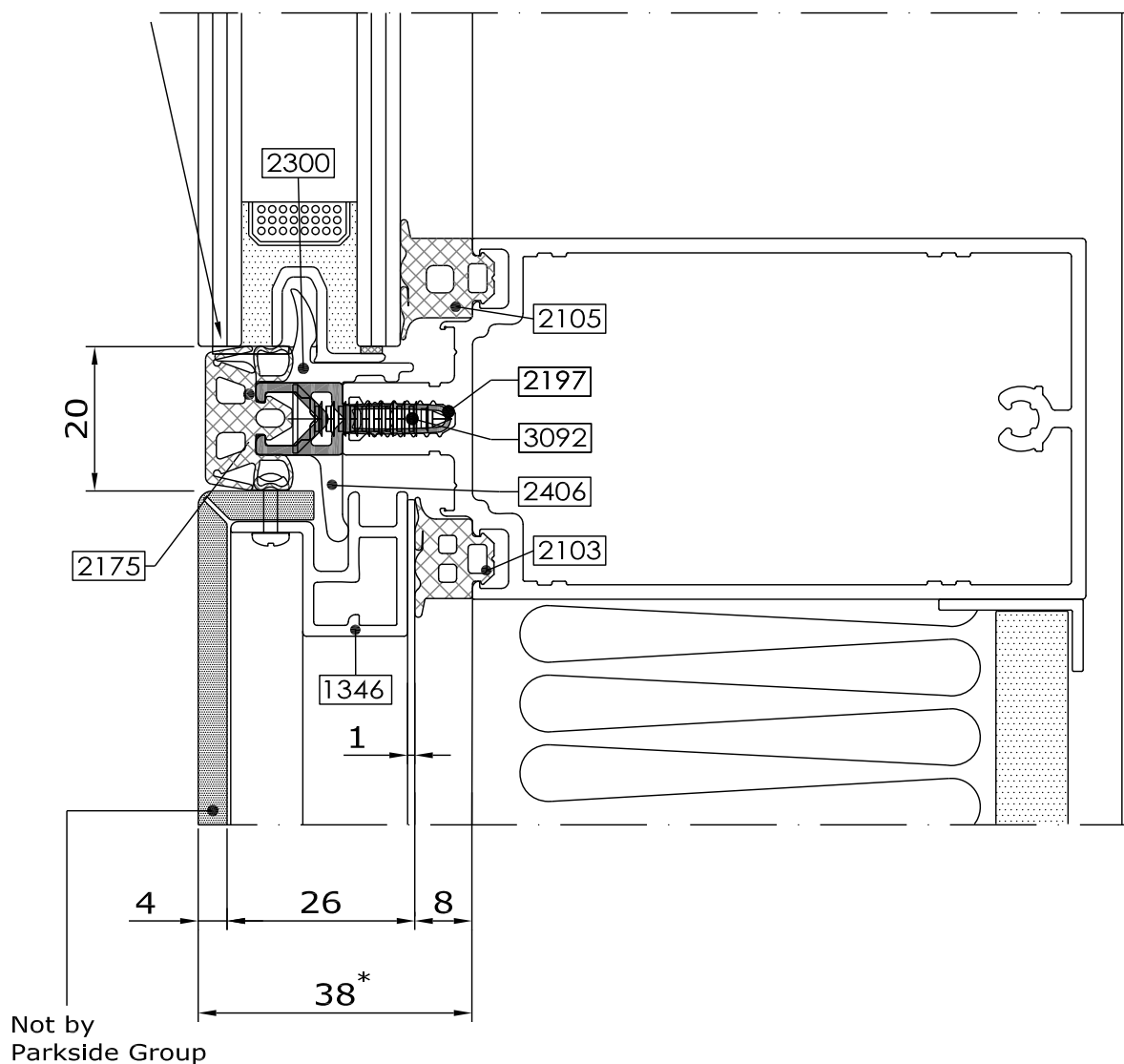
Copyright and ownership of this drawing is vested in EFT, Euro Facade Systems Ltd, whose prior written consent is required for its use, reproduction or for publication to any third party. All other rights reserved. Subject to modifications.

Transom detail 1346

Comar 6EFT



Any edge of gasket that will be exposed to external silicone seal must have bond breaker tape applied to its surface to prevent a three way seal



2.64

Fabricators Guide

* Refer to Glazing Chart for glazing options

Changes reserved
Sous reserve de modifications
Änderungen vorbehalten

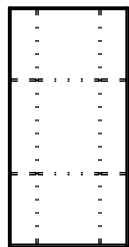
Issue: 04
Date :01-14

Typical details

2

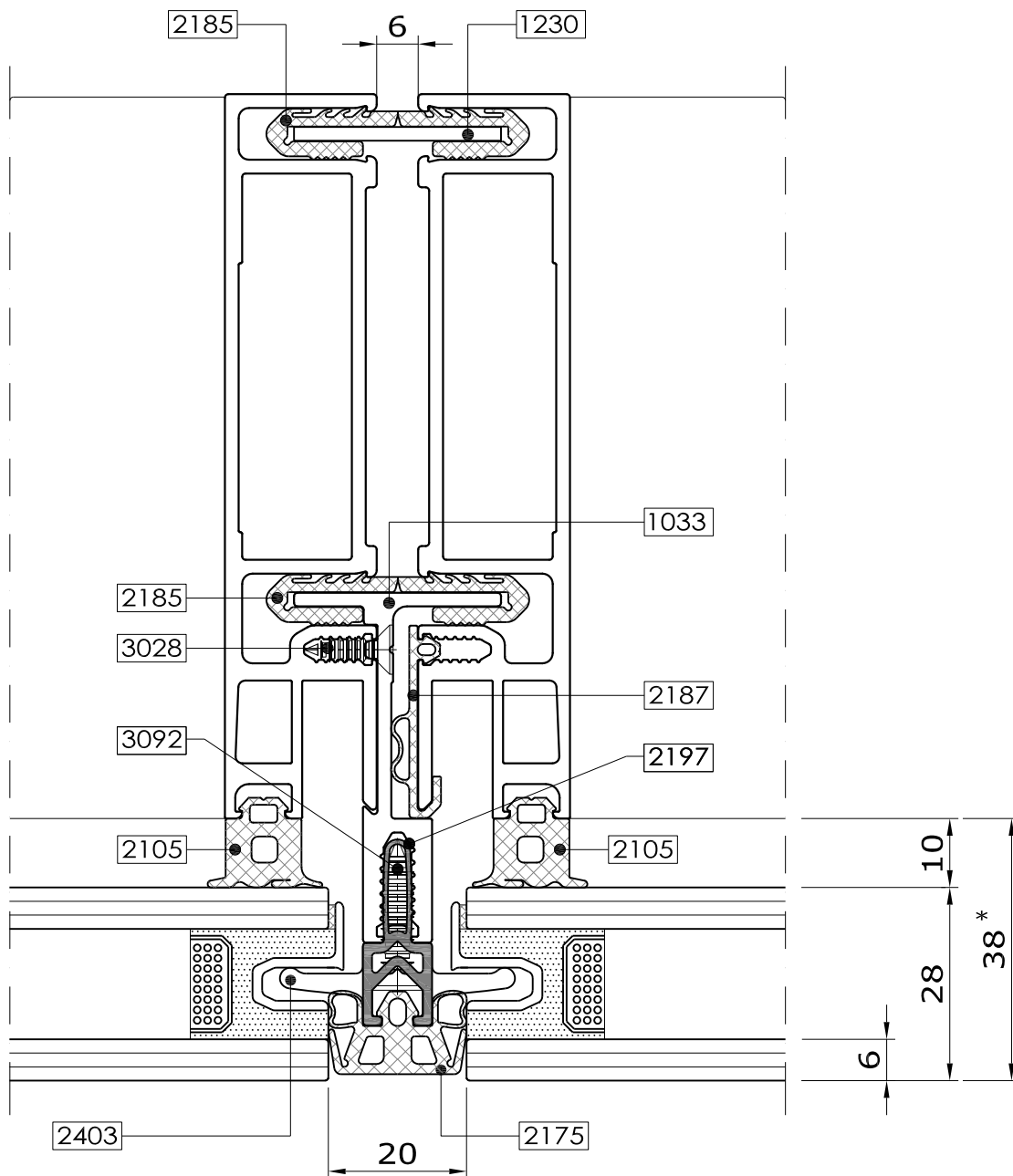
Comar 6EFT

Split mullion detail
EPDM gasket seal



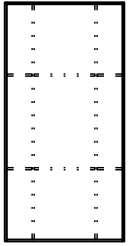
2.65

Fabricators Guide

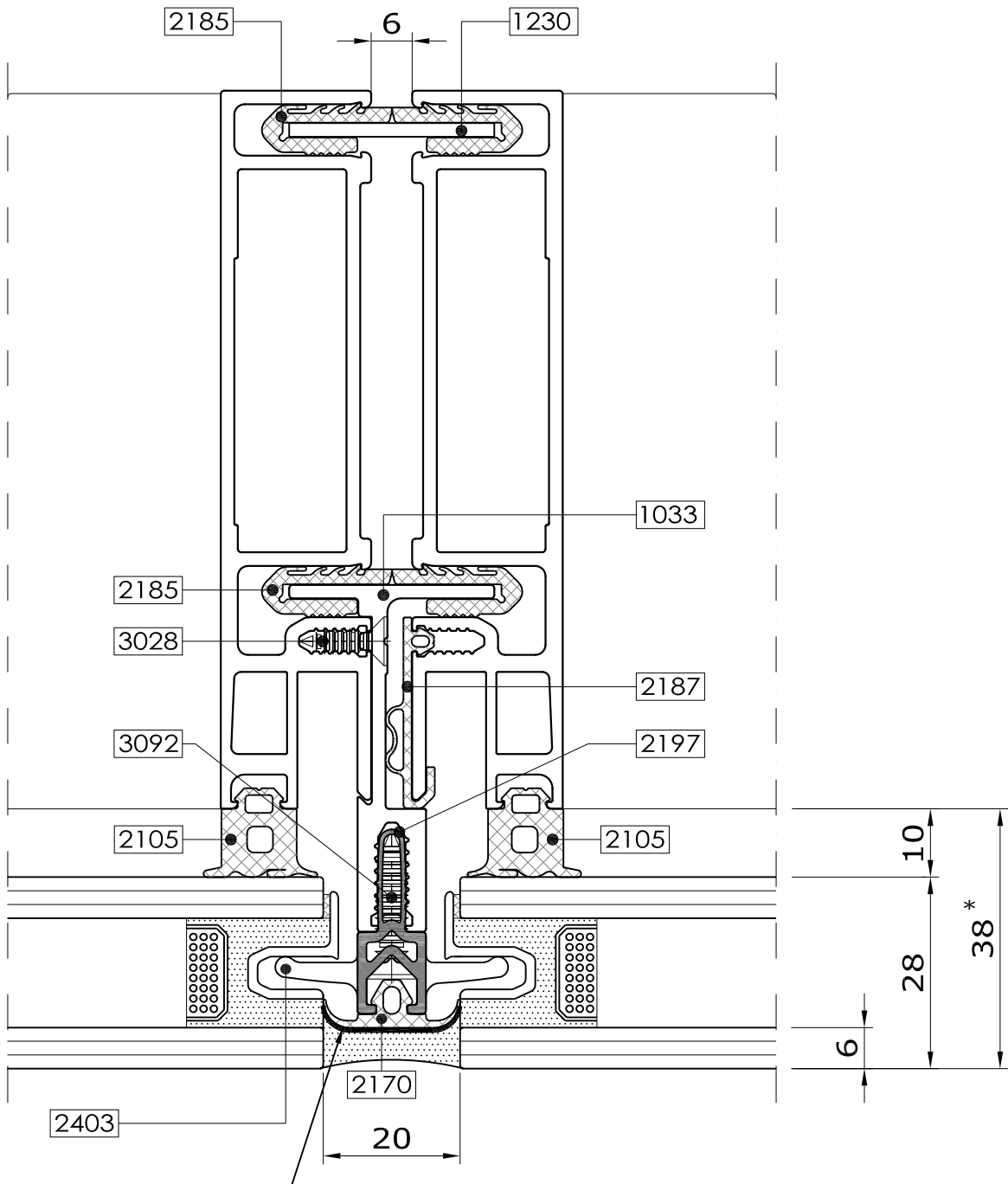


* Refer to Glazing Chart for glazing options

Split mullion detail Silicone seal



2.66



Any edge of gasket that will be exposed to external silicone seal must have bond breaker tape applied to its surface to prevent a three way seal

* Refer to Glazing Chart for glazing options

Changes reserved
Sous réserve de modifications
Änderungen vorbehalten

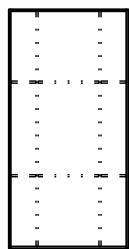
Issue: 04
Date :01-14

Typical details

2

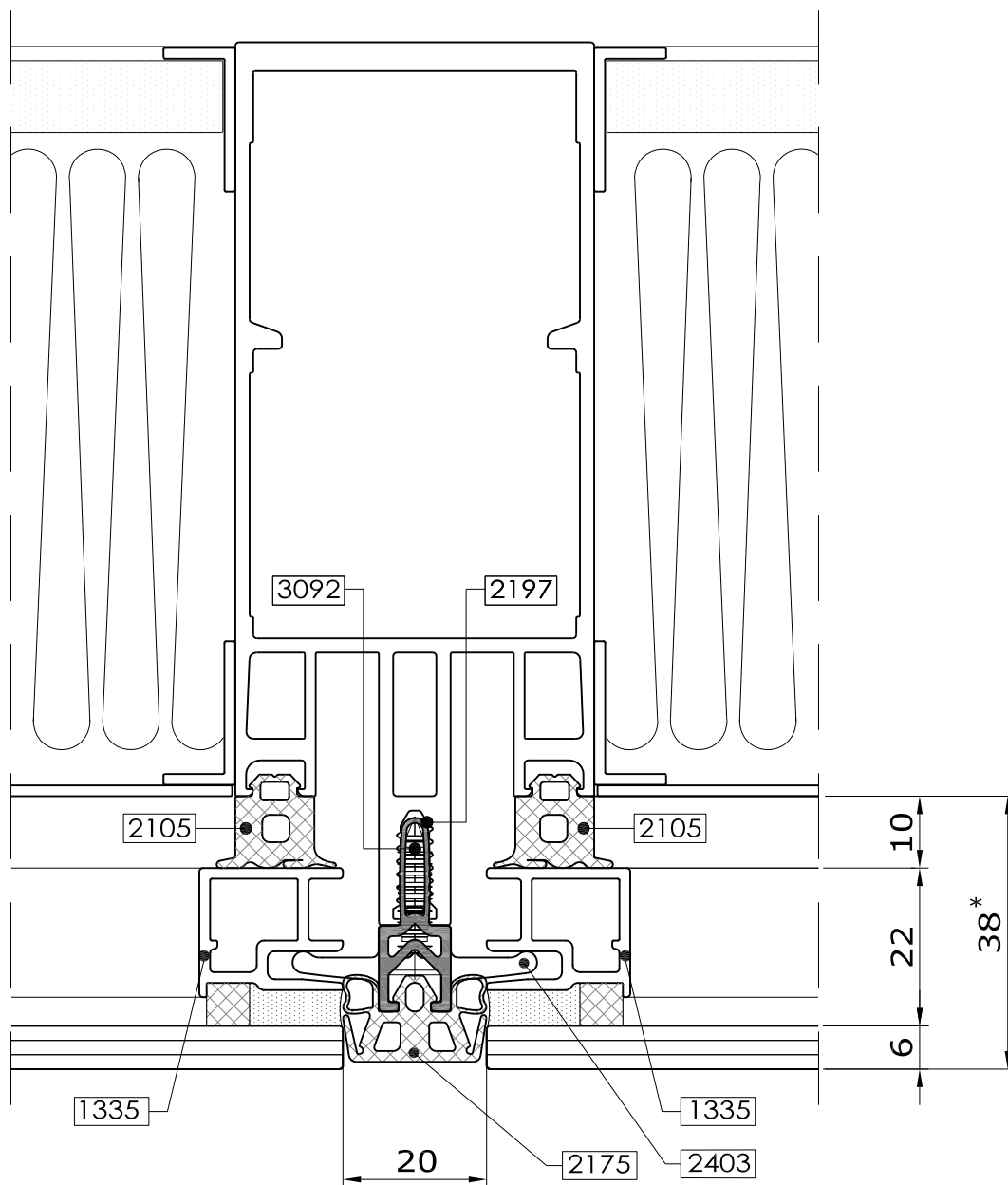
Comar 6EFT

Mullion detail
Single glazed
EPDM gasket seal



2.67

Fabricators Guide



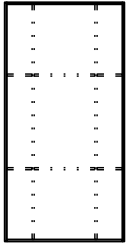
* Refer to Glazing Chart for glazing options

2

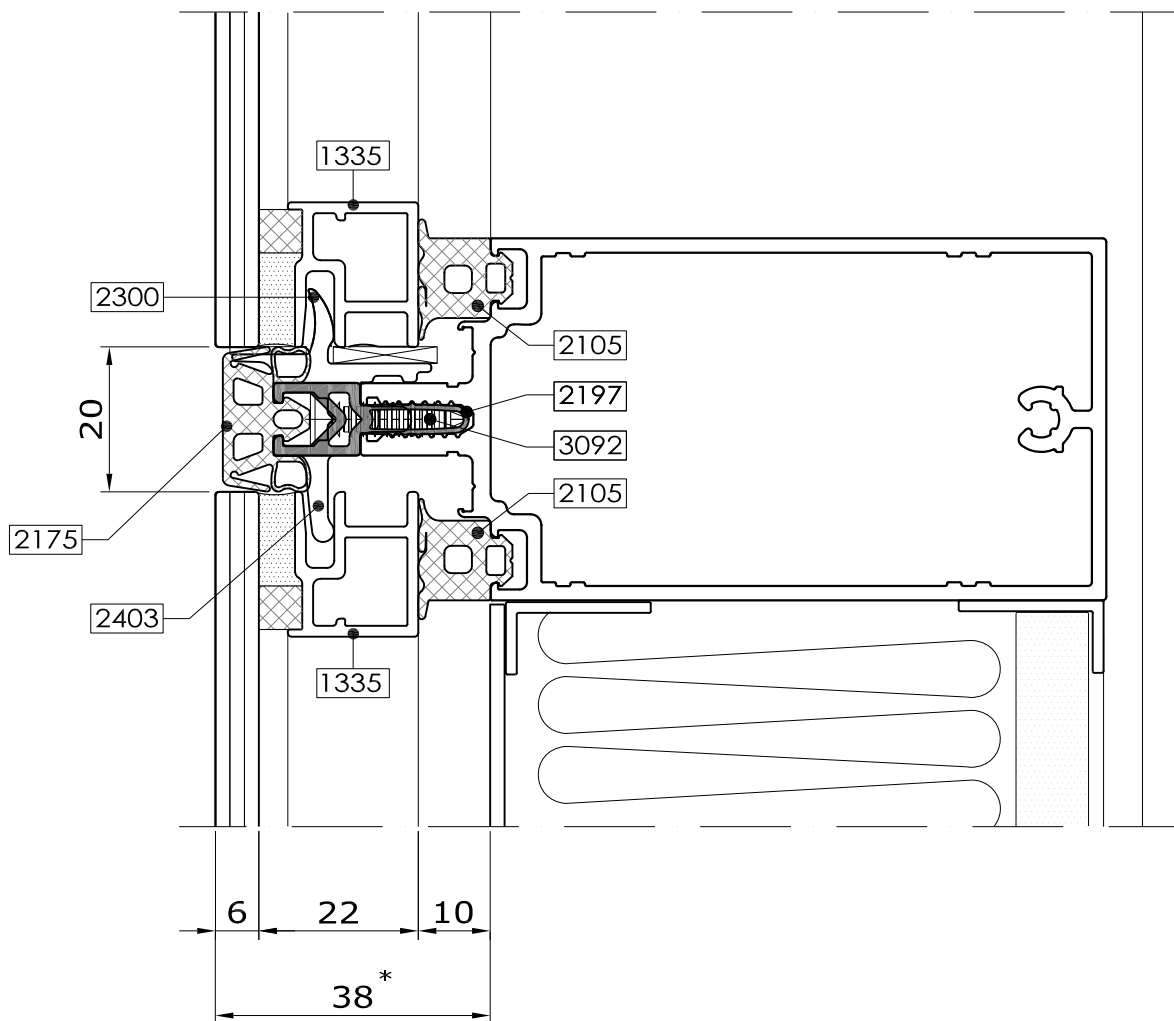
Typical details

Comar 6EFT

Transom detail Single glazed EPDM gasket seal



2.68



* Refer to Glazing Chart for glazing options

Fabricators Guide

Changes reserved
Sous reserve de modifications
Änderungen vorbehalten

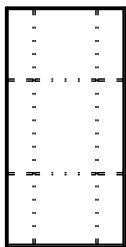
Issue: 04
Date :01-14

Typical details

2

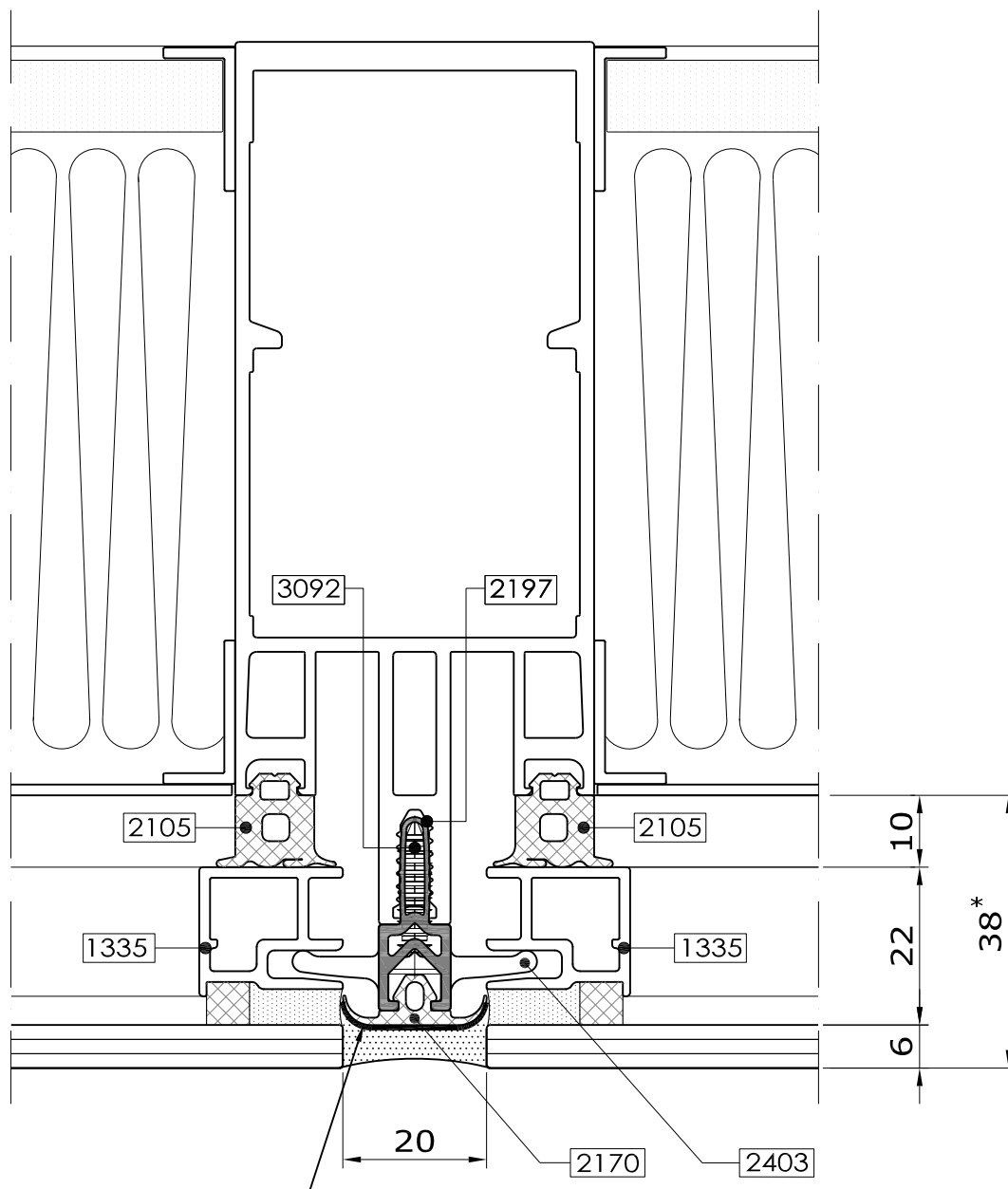
Comar 6EFT

Mullion detail
Single glazed
Silicone seal



2.69

Fabricators Guide



Any edge of gasket that will be exposed to external silicone seal must have bond breaker tape applied to its surface to prevent a three way seal

* Refer to Glazing Chart for glazing options



comar

ARCHITECTURAL ALUMINIUM SYSTEMS

Changes reserved
Sous reserve de modifications
Änderungen vorbehalten

Issue: 04
Date : 01-14

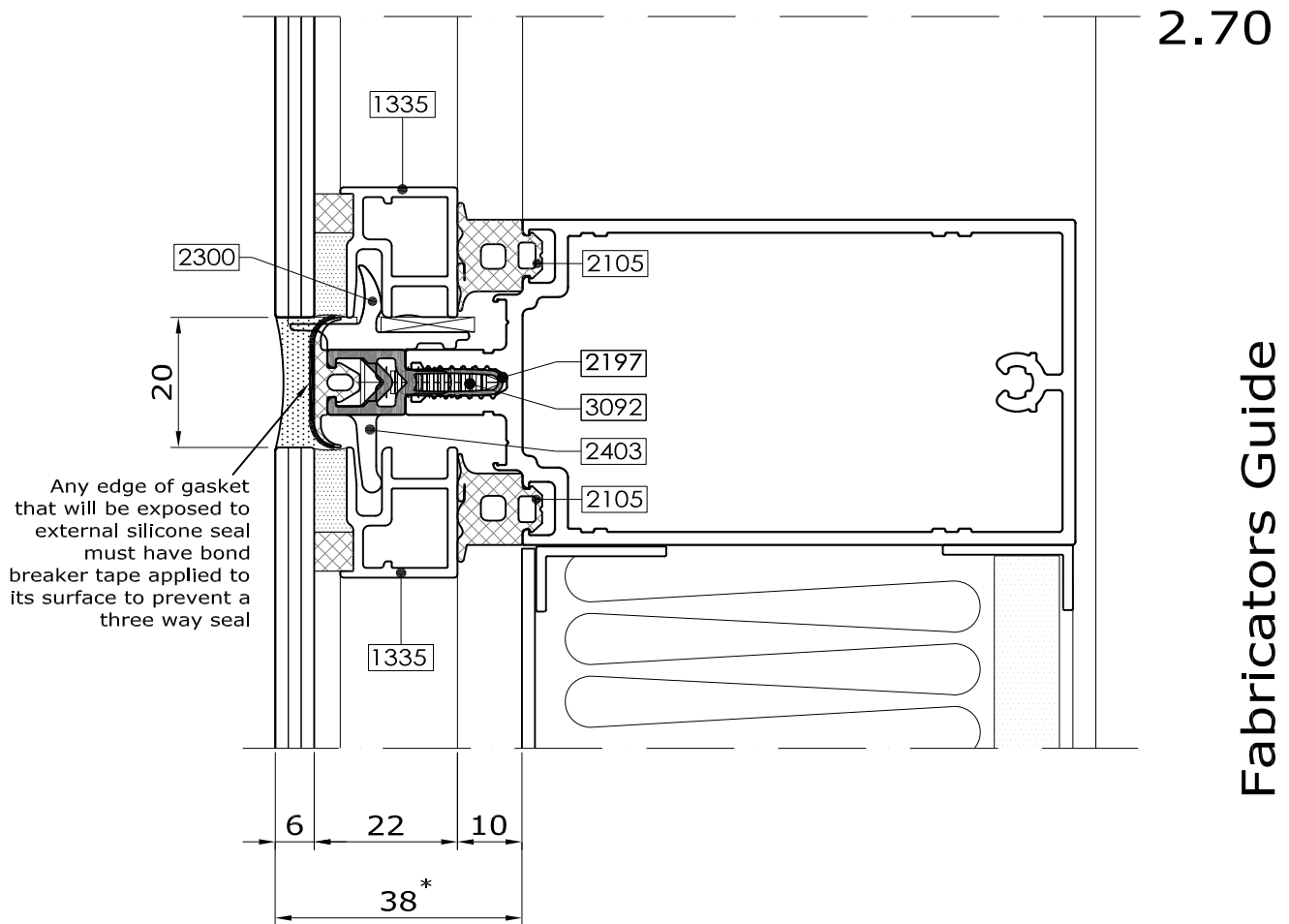
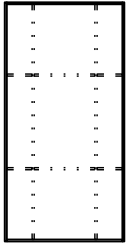
Copyright and ownership of this drawing is vested in EFT, Euro Facade Systems Ltd, whose prior written consent is required for its use, reproduction or for publication to any third party. All other rights reserved. Subject to modifications.

2

Typical details

Comar 6EFT

Transom detail
Single glazed
Silicone seal



Fabricators Guide

* Refer to Glazing Chart for glazing options

Changes reserved
Sous reserve de modifications
Änderungen vorbehalten

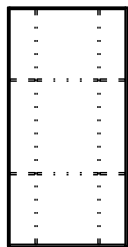
Issue: 04
Date :01-14

Typical details

2

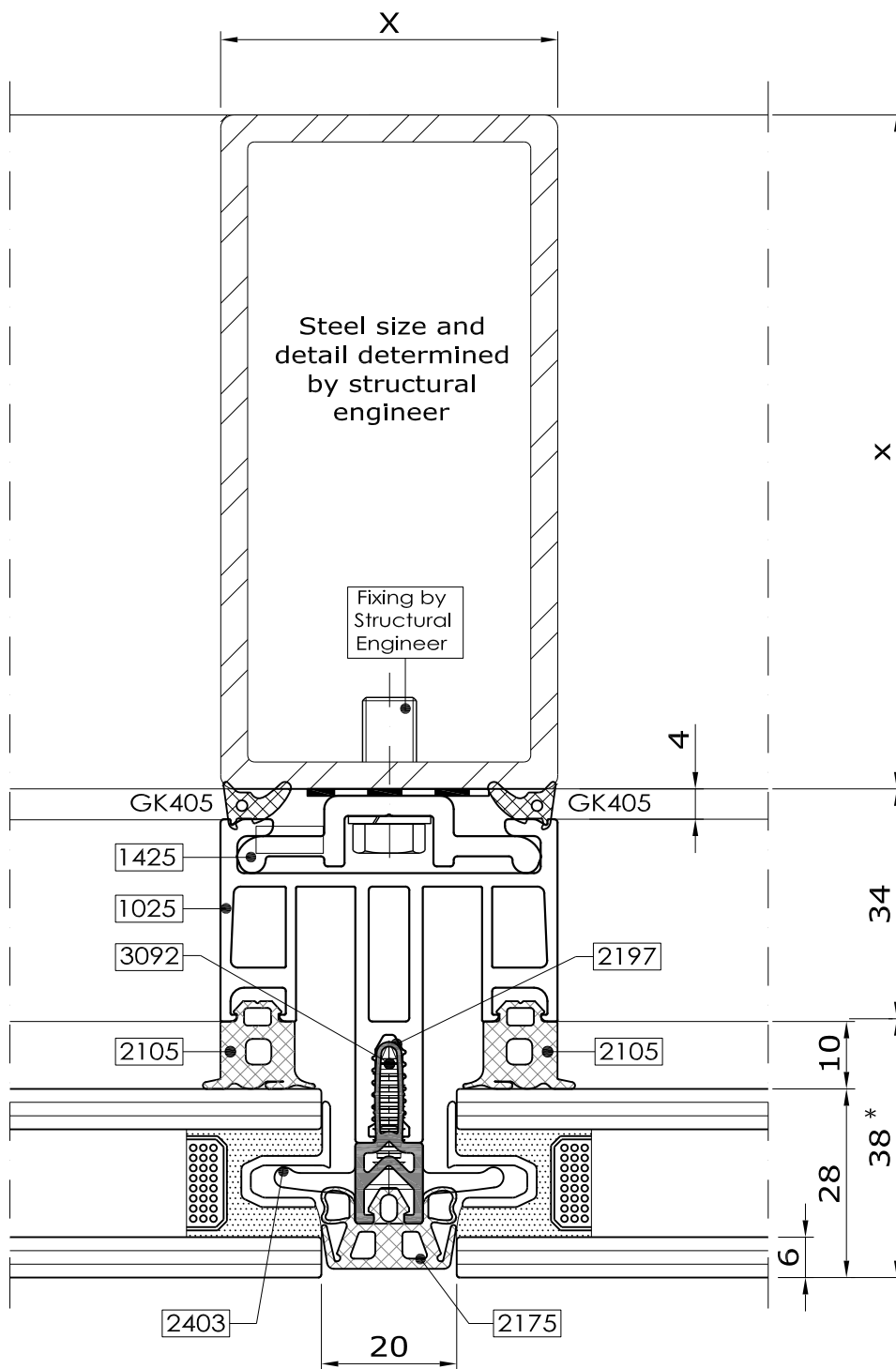
Comar 6EFT

Mullion detail
Direct fix to steel
EPDM gasket seal



2.71

Fabricators Guide



* Refer to Glazing Chart for glazing options



comar

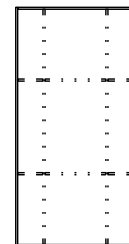
ARCHITECTURAL ALUMINIUM SYSTEMS

Changes reserved
Sous reserve de modifications
Änderungen vorbehalten

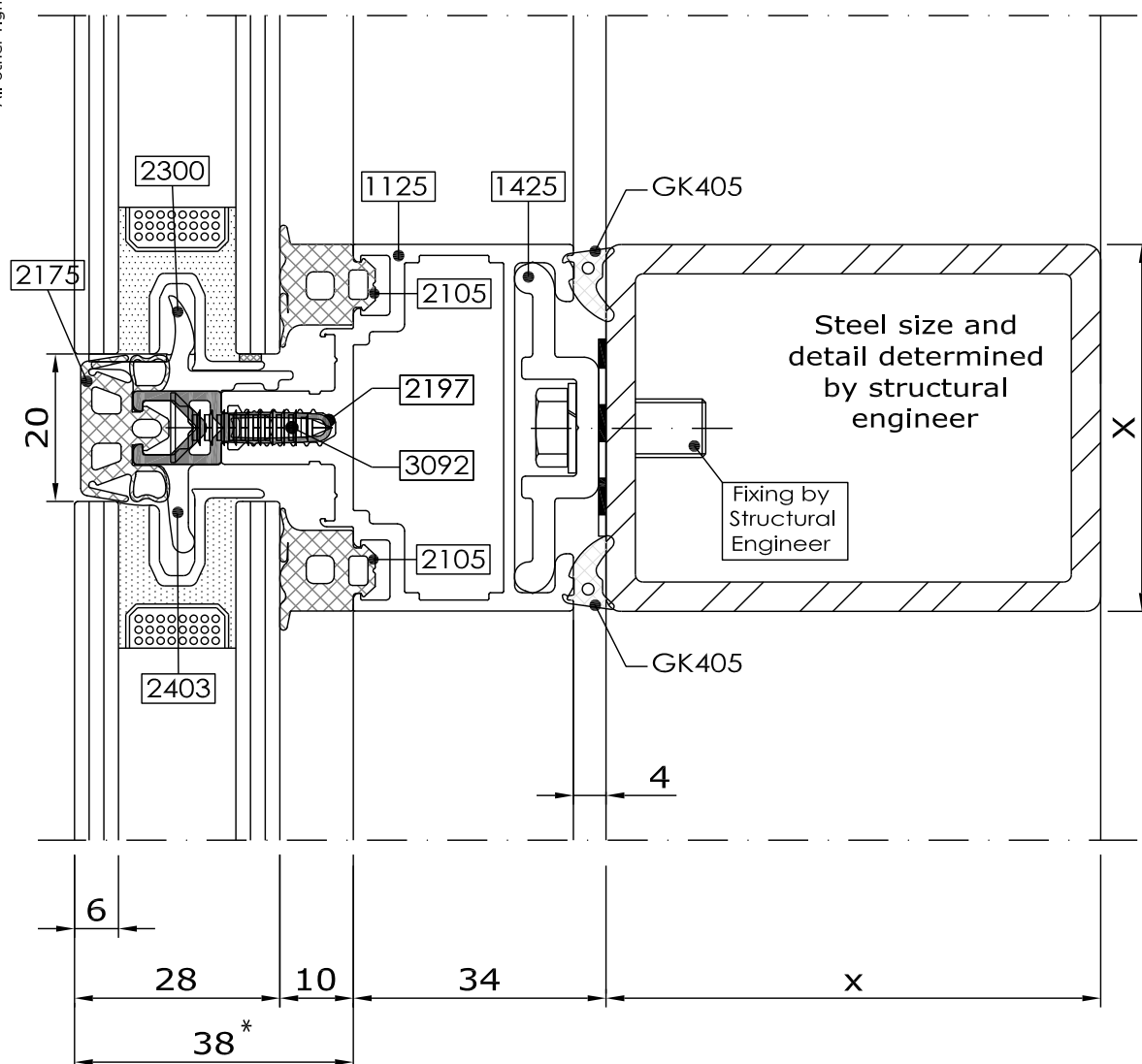
Issue: 04
Date : 01-14

Copyright and ownership of this drawing is vested in EFT,
Euro Facade Systems Ltd, whose prior written consent is required
for its use, reproduction or for publication to any third party.
All other rights reserved. Subject to modifications.

Transom detail Direct fix to steel EPDM gasket seal



2.72



Fabricators Guide

* Refer to Glazing Chart for glazing options

Changes reserved
Sous reserve de modifications
Änderungen vorbehalten

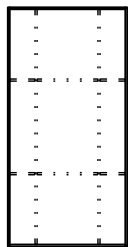
Issue: 04
Date :01-14

Typical details

2

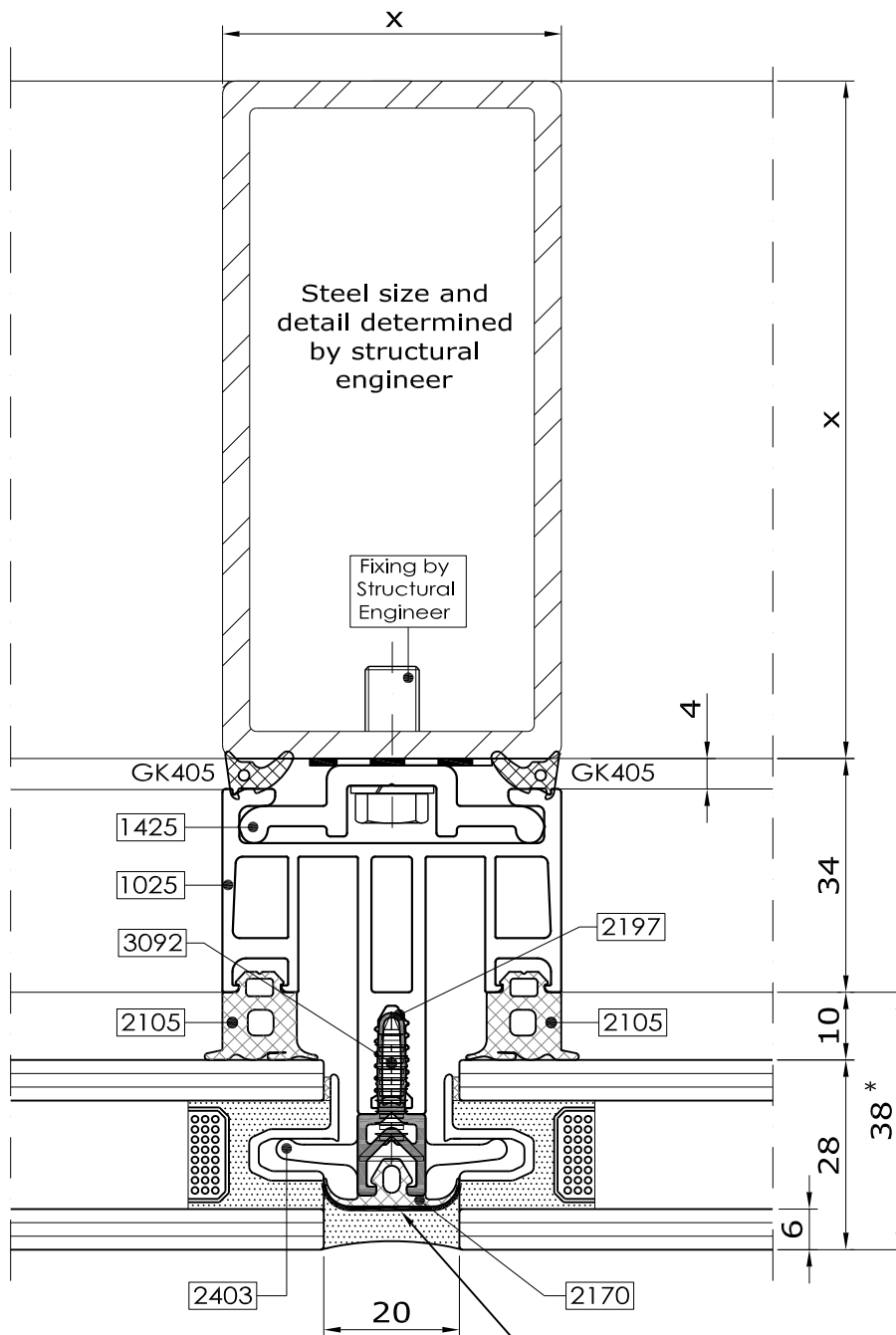
Comar 6EFT

Mullion detail
Direct fix to steel
Silicone seal



2.73

Fabricators Guide



* Refer to Glazing Chart for glazing options

Any edge of gasket that will be exposed to external silicone seal must have bond breaker tape applied to its surface to prevent a three way seal



comar

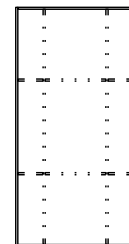
ARCHITECTURAL ALUMINIUM SYSTEMS

Changes reserved
Sous reserve de modifications
Änderungen vorbehalten

Issue: 04
Date : 01-14

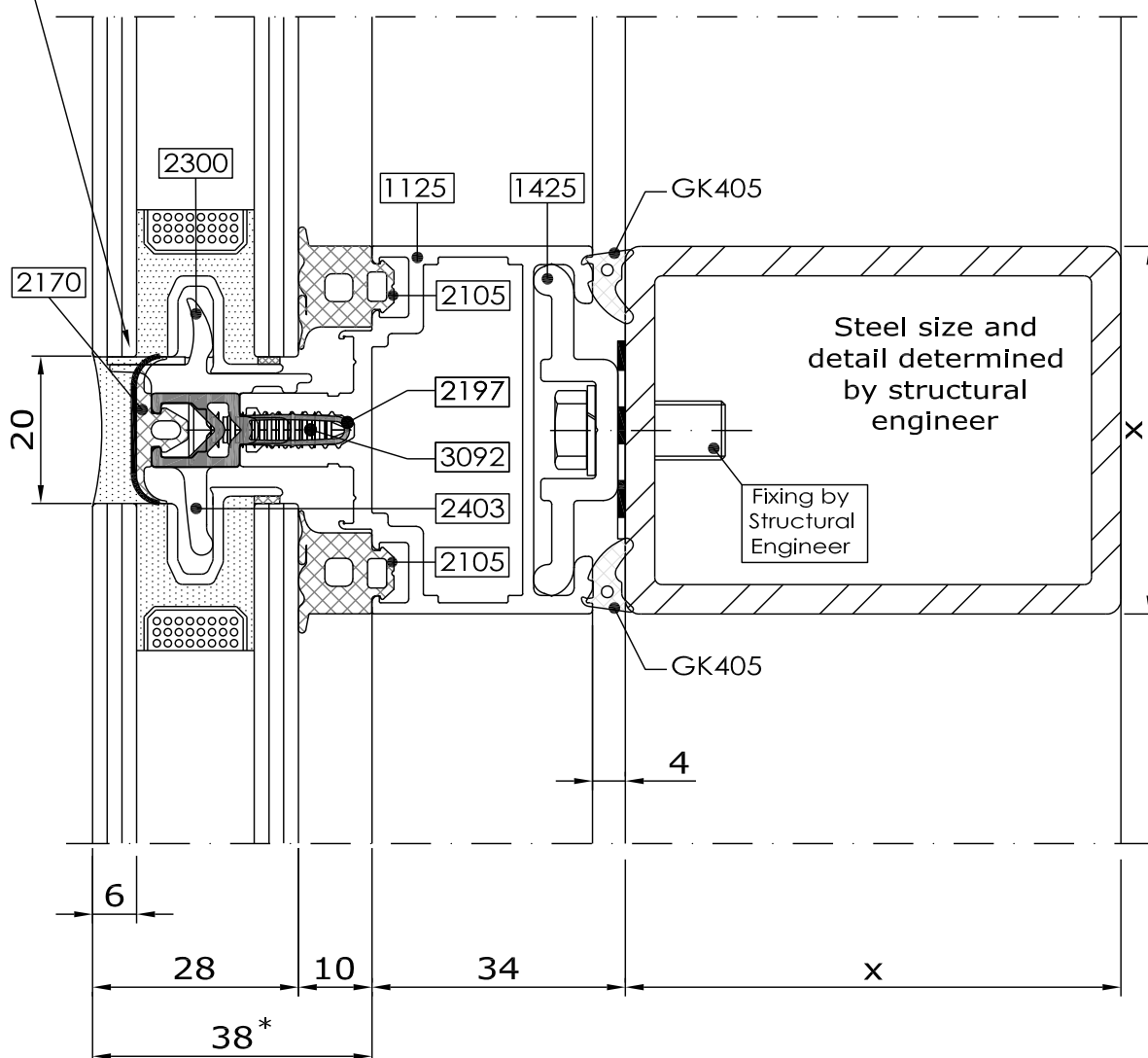
Copyright and ownership of this drawing is vested in EFT, Euro Facade Systems Ltd, whose prior written consent is required for its use, reproduction or for publication to any third party. All other rights reserved. Subject to modifications.

Transom detail Direct fix to steel Silicone seal



Any edge of gasket that will be exposed to external silicone seal must have bond breaker tape applied to its surface to prevent a three way seal

2.74



Fabricators Guide

* Refer to Glazing Chart for glazing options

Changes reserved
Sous reserve de modifications
Änderungen vorbehalten

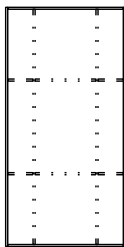
Issue: 04
Date :01-14

Typical details

2

Comar 6EFT

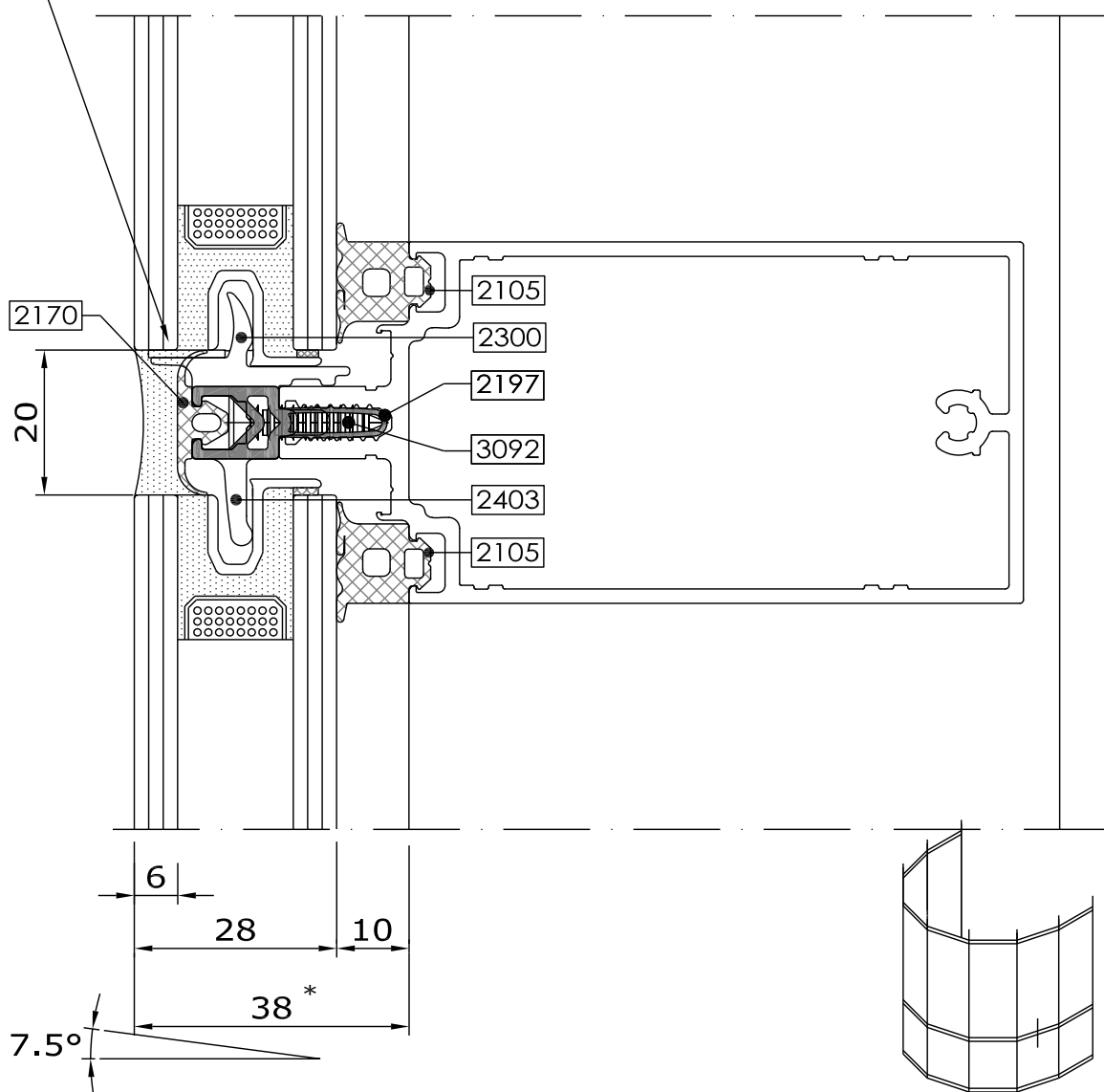
Transom detail, Silicone seal, Facetted facade 7.5° maximum



Any edge of gasket that will be exposed to external silicone seal must have bond breaker tape applied to its surface to prevent a three way seal

2.75

Fabricators Guide



* Refer to Glazing Chart for glazing options



comar

ARCHITECTURAL ALUMINIUM SYSTEMS

Changes reserved
Sous reserve de modifications
Änderungen vorbehalten

Issue: 04
Date : 01-14

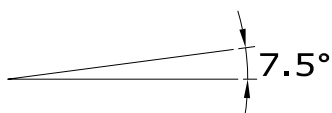
Copyright and ownership of this drawing is vested in EFT, Euro Facade Systems Ltd, whose prior written consent is required for its use, reproduction or for publication to any third party. All other rights reserved. Subject to modifications.

[illegible]

2.76



* Refer to Glazing Chart for glazing options



comar
ARCHITECTURAL ALUMINIUM SYSTEMS

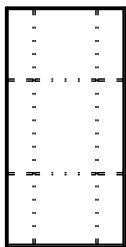
ARCHITECTURAL ALUMINIUM SYSTEMS

Typical details

2

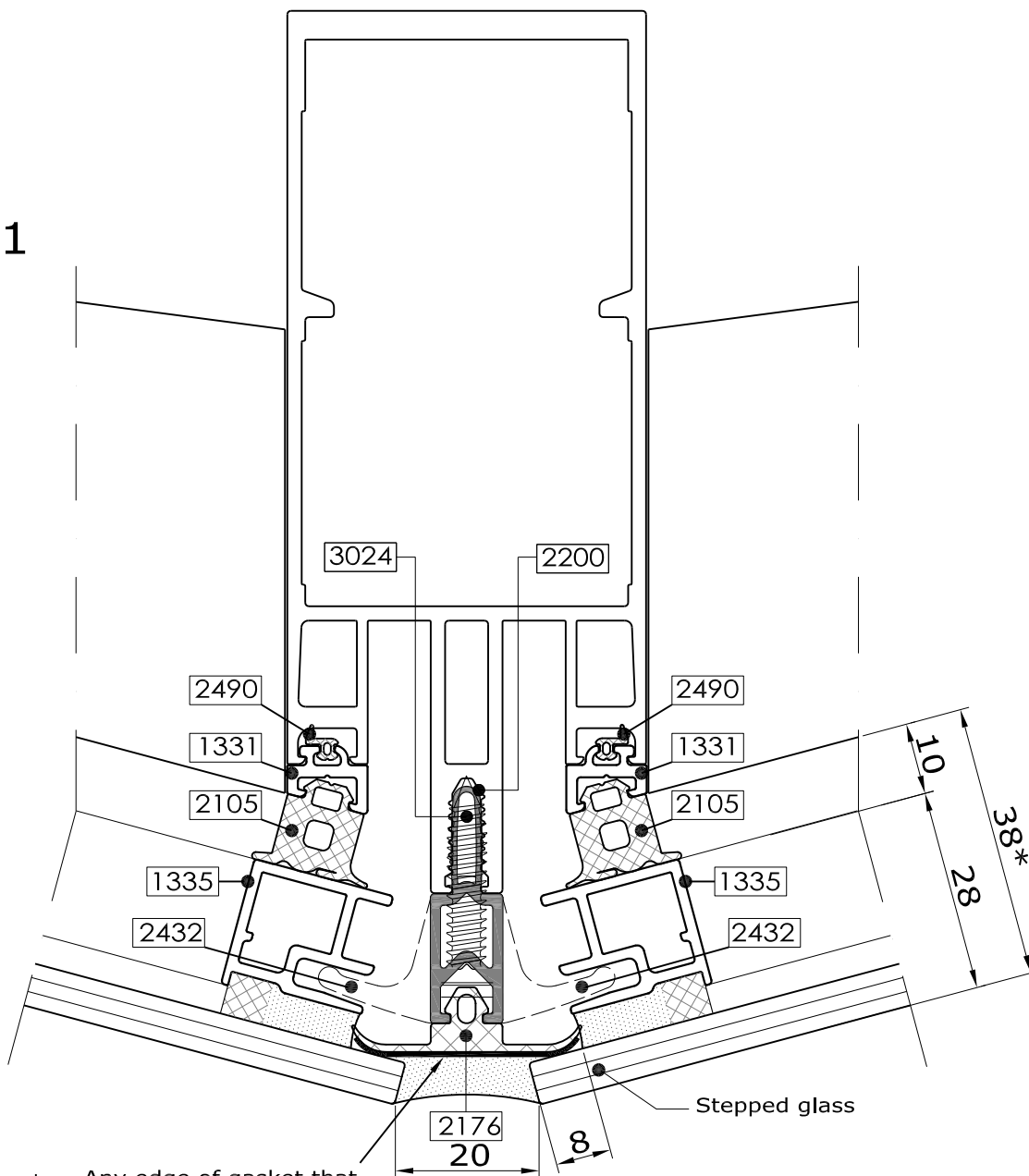
Comar 6EFT

Mullion detail, Facetted facade - Single glazed 15° nominal



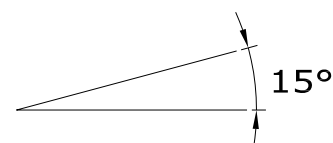
2.76.1

Fabricators Guide

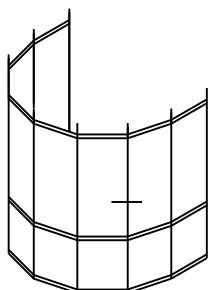


Any edge of gasket that will be exposed to external silicone seal must have bond breaker tape applied to its surface to prevent a three way seal

* Refer to Glazing Chart for glazing options



Changes reserved
Sous reserve de modifications
Änderungen vorbehalten



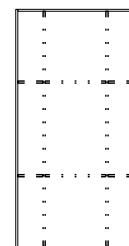
comar

ARCHITECTURAL ALUMINIUM SYSTEMS

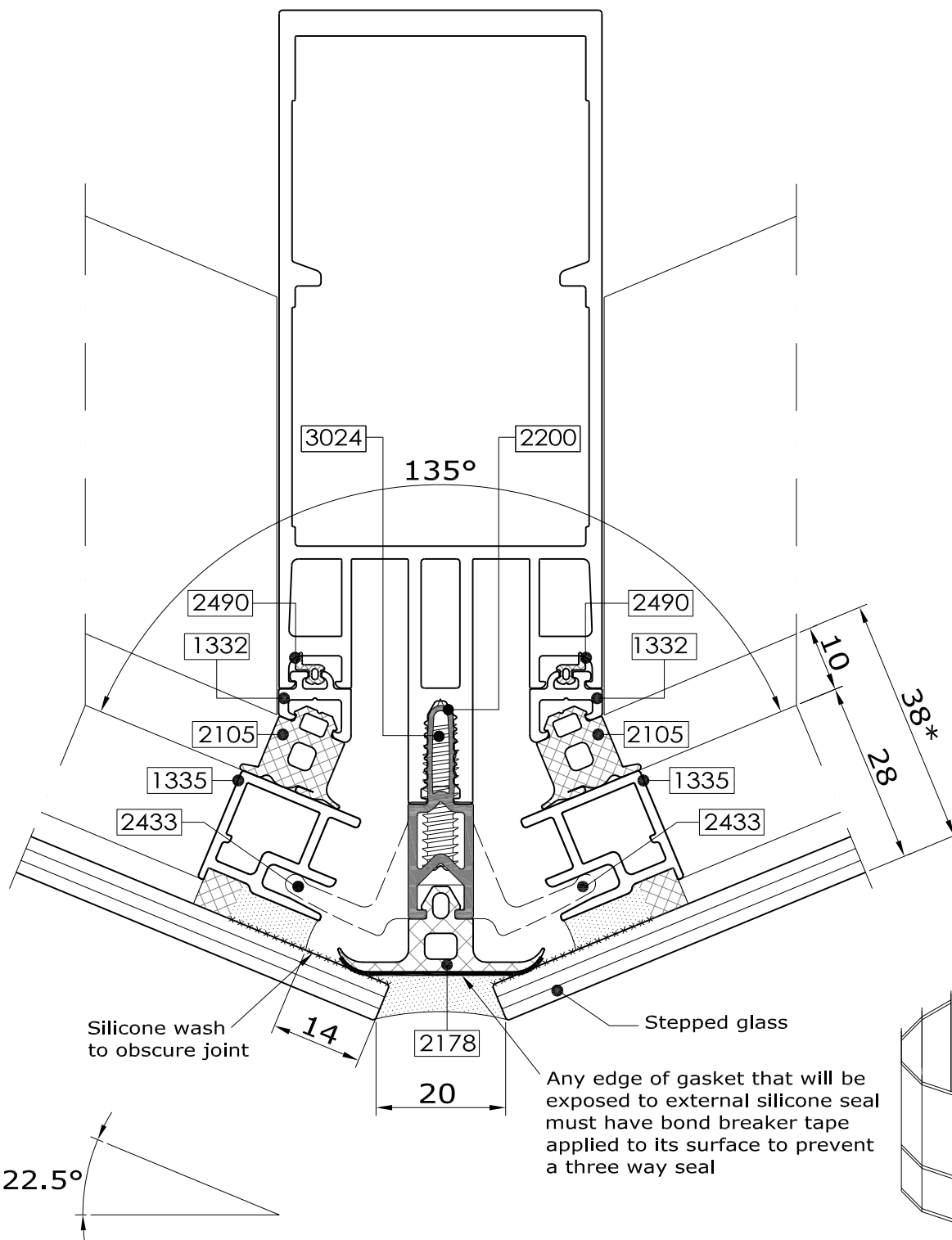
Issue: 04
Date : 01-14

Copyright and ownership of this drawing is vested in EFT, Euro Facade Systems Ltd, whose prior written consent is required for its use, reproduction or for publication to any third party. All other rights reserved. Subject to modifications.

Mullion detail Facetted facade - Single glazed 22.5° nominal



2.77



Fabricators Guide

* Refer to Glazing Chart for glazing options

Changes reserved
Sous reserve de modifications
Änderungen vorbehalten

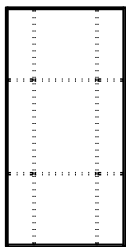
Issue: 04
Date :01-14

Typical details

2

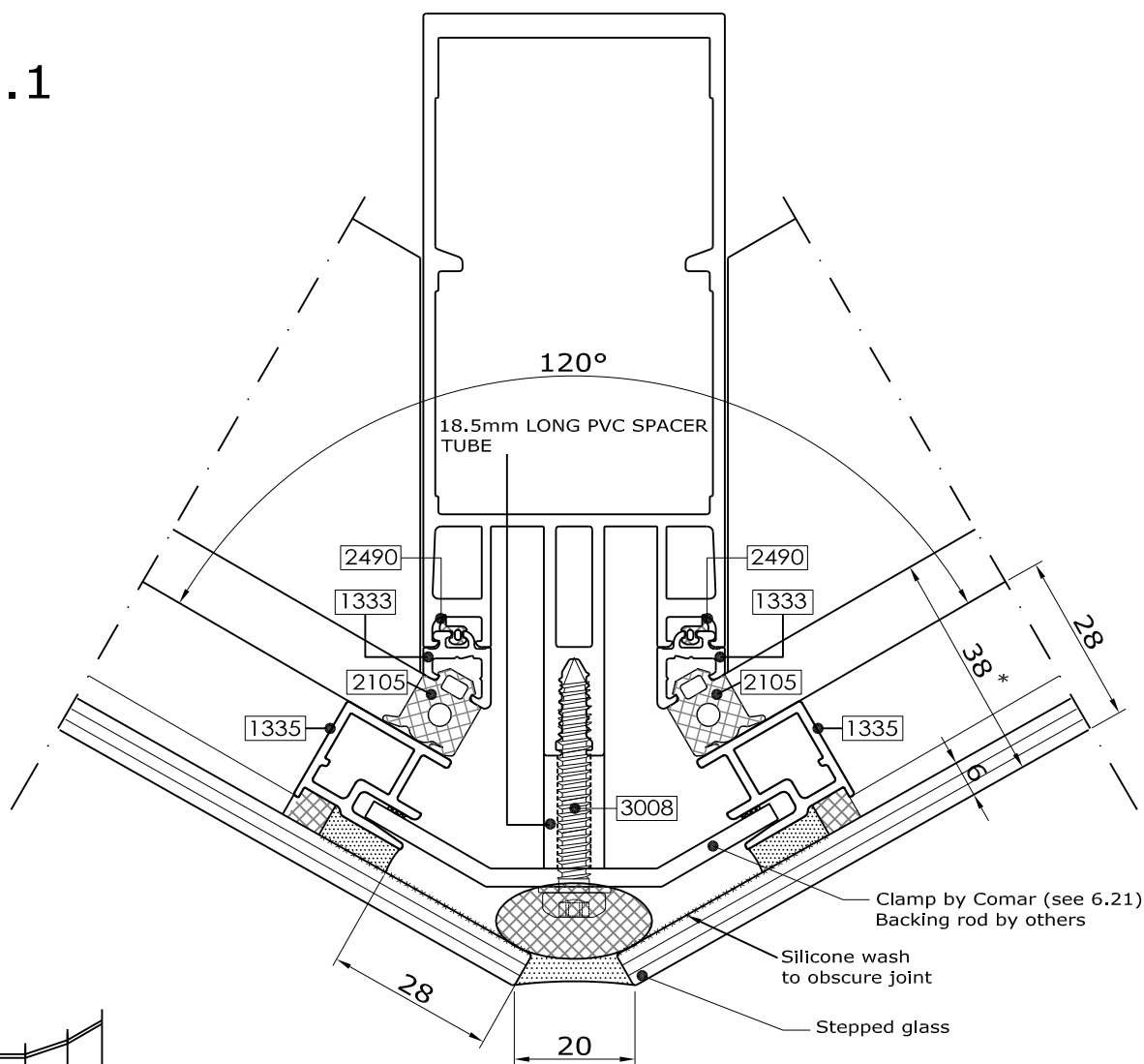
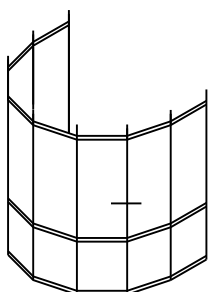
Comar 6EFT

Mullion detail
Facetted facade
30° nominal

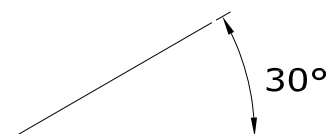


2.77.1

Fabricators Guide



* Refer to Glazing Chart for glazing options

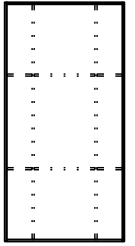


2

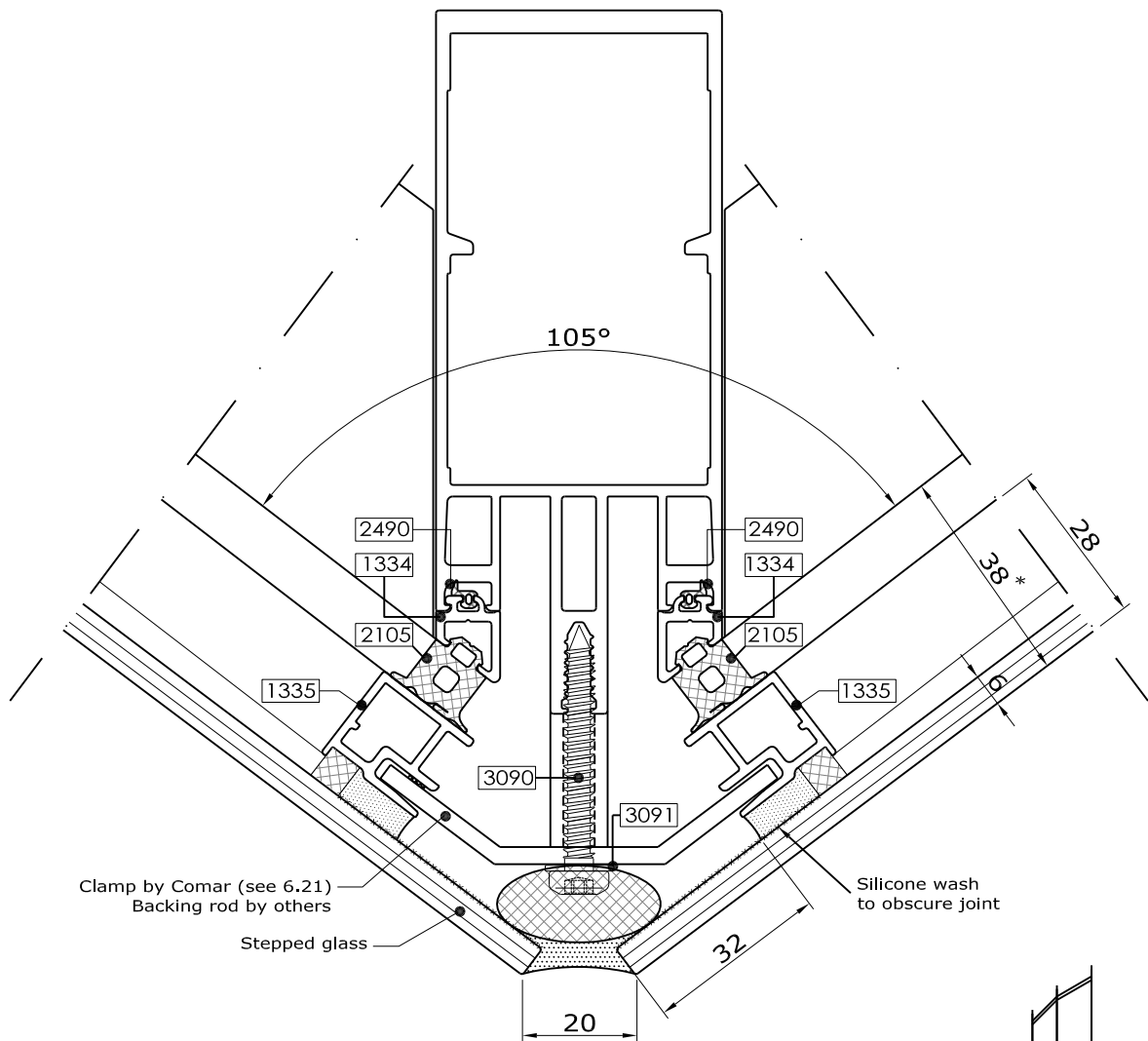
Typical details

Comar 6EFT

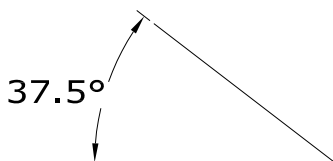
Mullion detail
Facetted facade
37.5° nominal



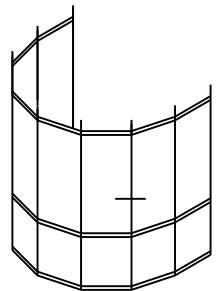
2.78



* Refer to Glazing Chart for glazing options



Fabricators Guide



comar

ARCHITECTURAL ALUMINIUM SYSTEMS

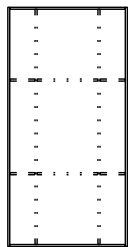
Changes reserved
Sous reserve de modifications
Änderungen vorbehalten

Issue: 04
Date :01-14

Typical details

2

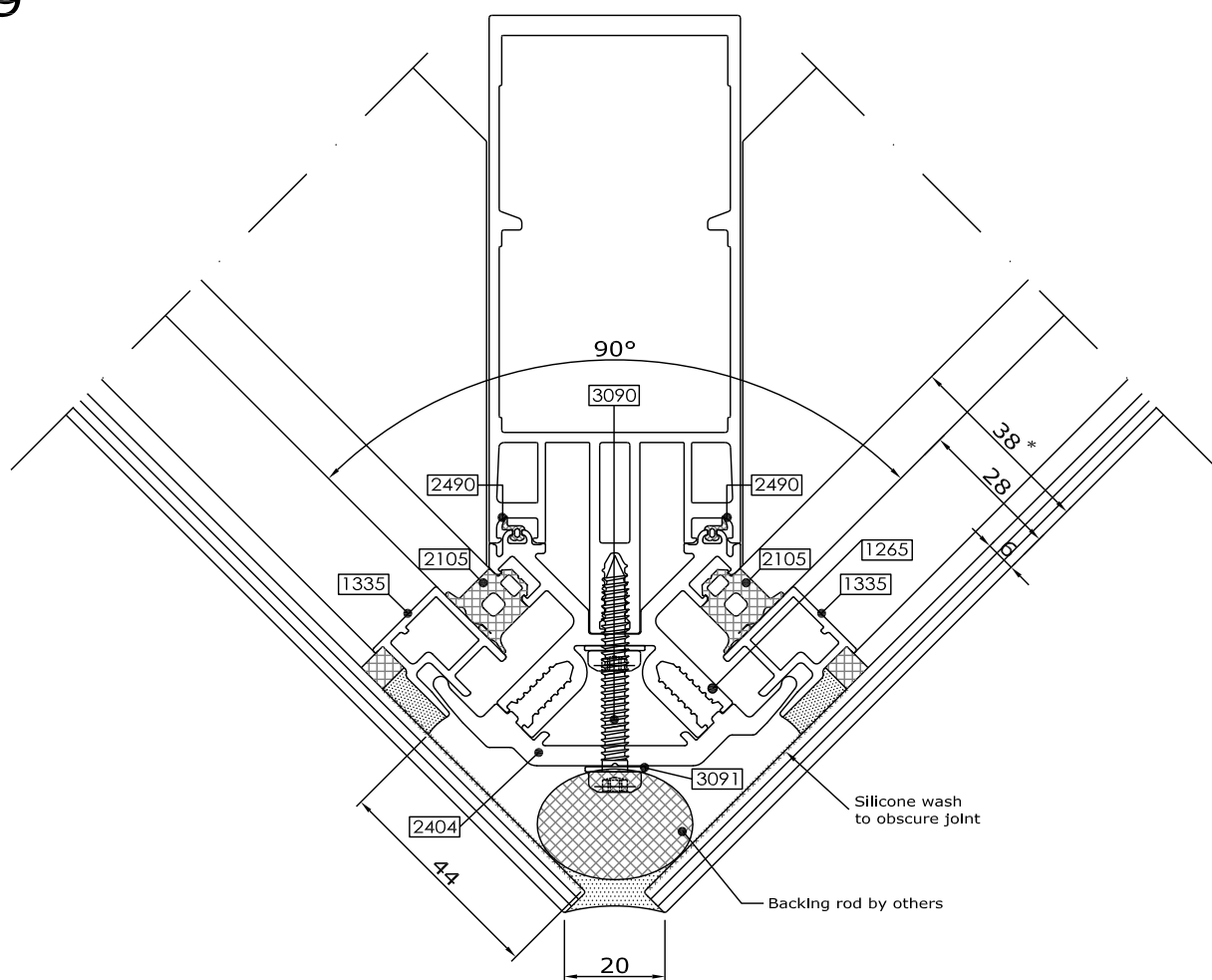
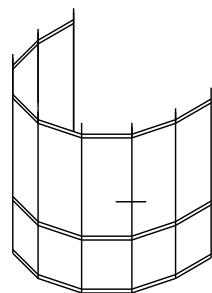
Comar 6EFT



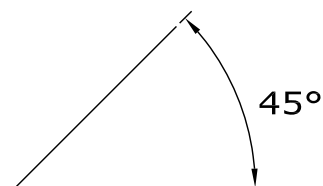
Mullion detail, Facetted facade - Single glazed
45° nominal

2.79

Fabricators Guide



* Refer to Glazing Chart for glazing options



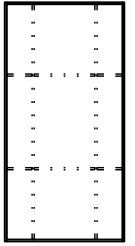
Changes reserved
Sous reserve de modifications
Änderungen vorbehalten

2

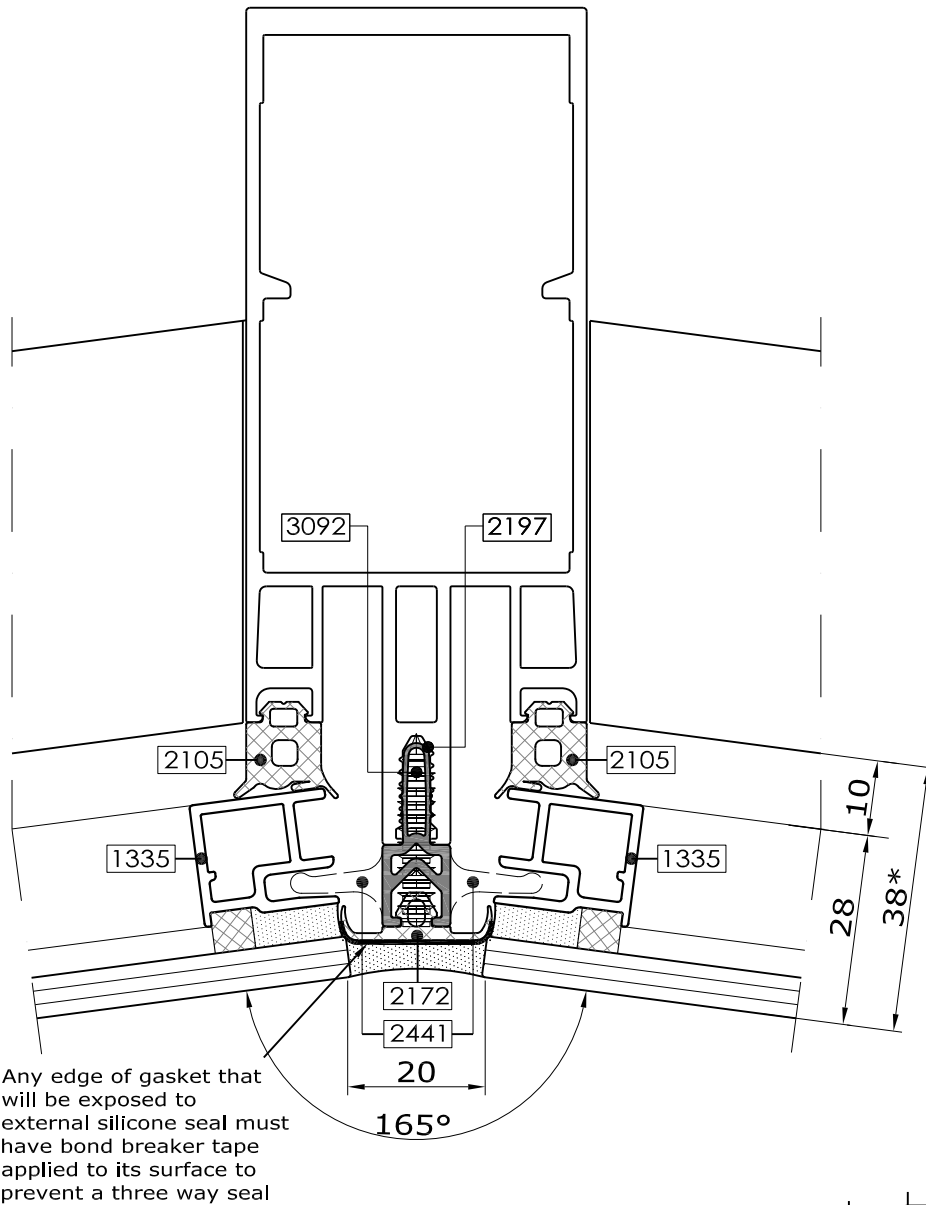
Typical details

Mullion detail Facetted facade - Single glazed 7.5° maximum

Comar 6EFT

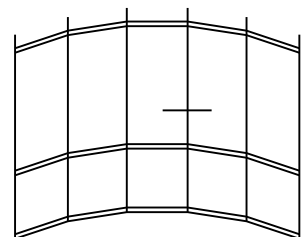
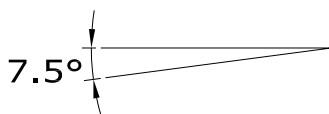


2.80



Fabricators Guide

* Refer to Glazing Chart for glazing options



comar

ARCHITECTURAL ALUMINIUM SYSTEMS

Changes reserved
Sous reserve de modifications
Änderungen vorbehalten

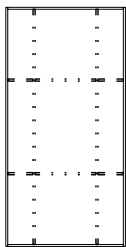
Issue: 04
Date :01-14

Typical details

2

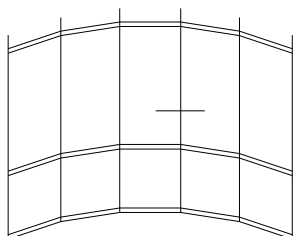
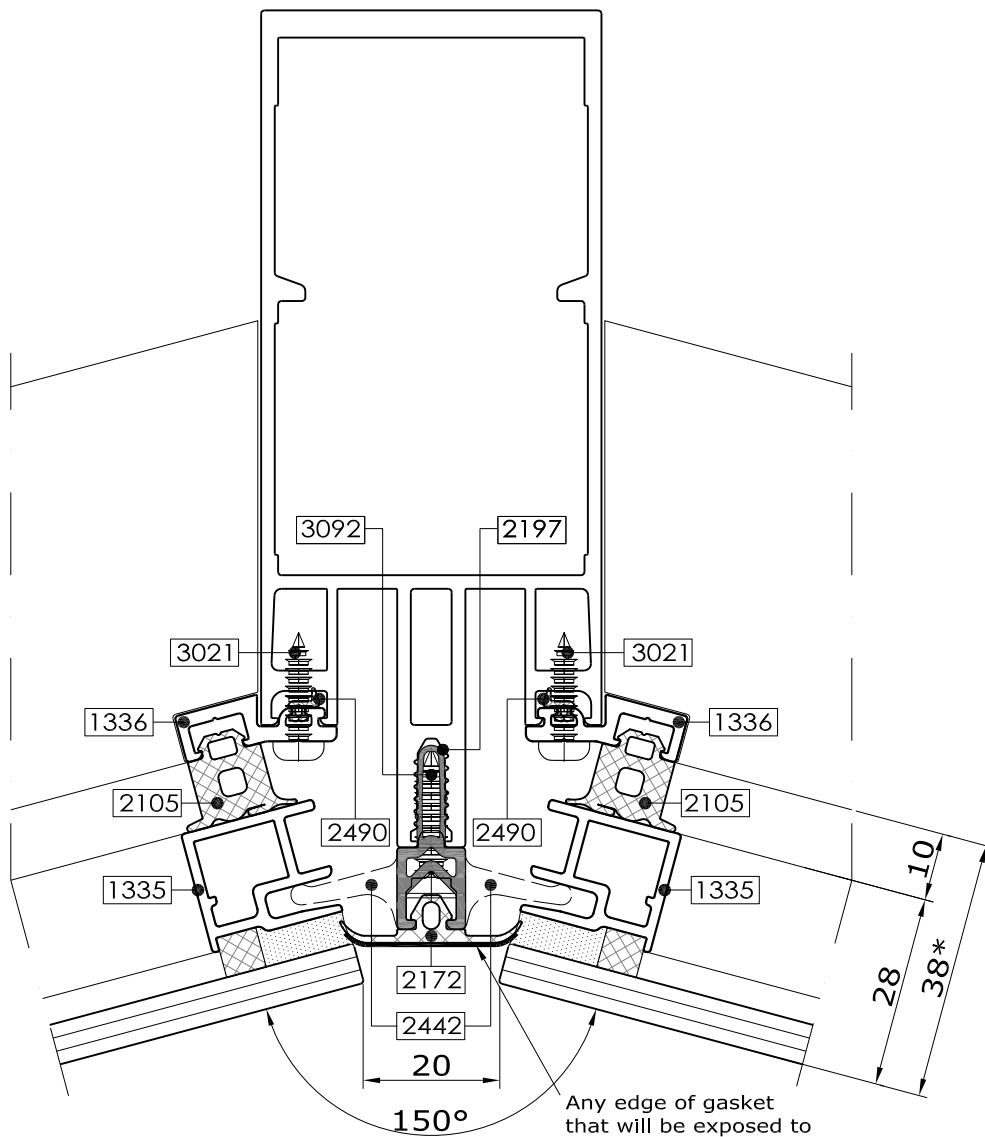
Comar 6EFT

Mullion detail, Facetted facade - Single glazed
15° nominal

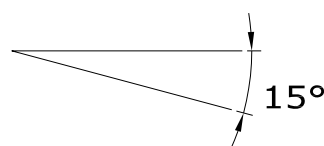


2.80.1

Fabricators Guide



* Refer to Glazing Chart for glazing options

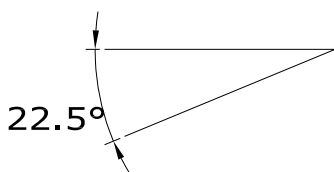


[illegible]

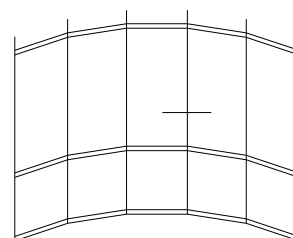
2.81



Any edge of gasket that will be exposed to external silicone seal must have bond breaker tape applied to its surface to prevent a three way seal



* Refer to Glazing Chart for glazing options



Changes reserved
Sous reserve de modifications
Änderungen vorbehalten

Issue: 04
Date :01-14

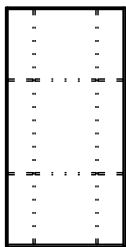


comar
ARCHITECTURAL ALUMINIUM SYSTEMS

Typical details

2

Comar 6EFT

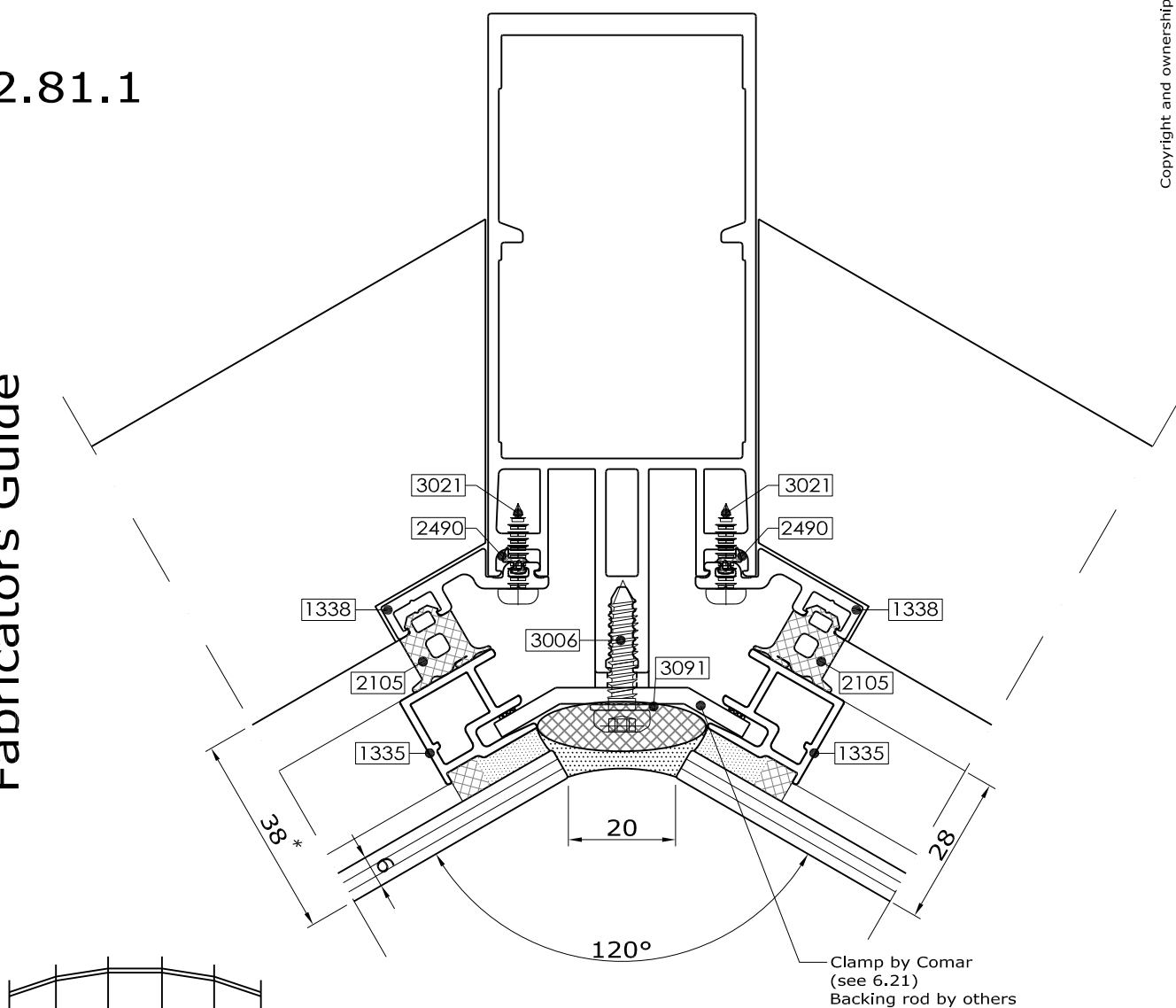


Mullion detail, Facetted facade - Single glazed 30° nominal

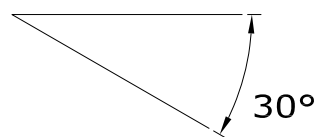
2.81.1

Fabricators Guide

Copyright and ownership of this drawing is vested in EFT, Euro Facade Systems Ltd, whose prior written consent is required for its use, reproduction or for publication to any third party. All other rights reserved. Subject to modifications.

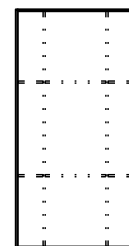


* Refer to Glazing Chart for glazing options

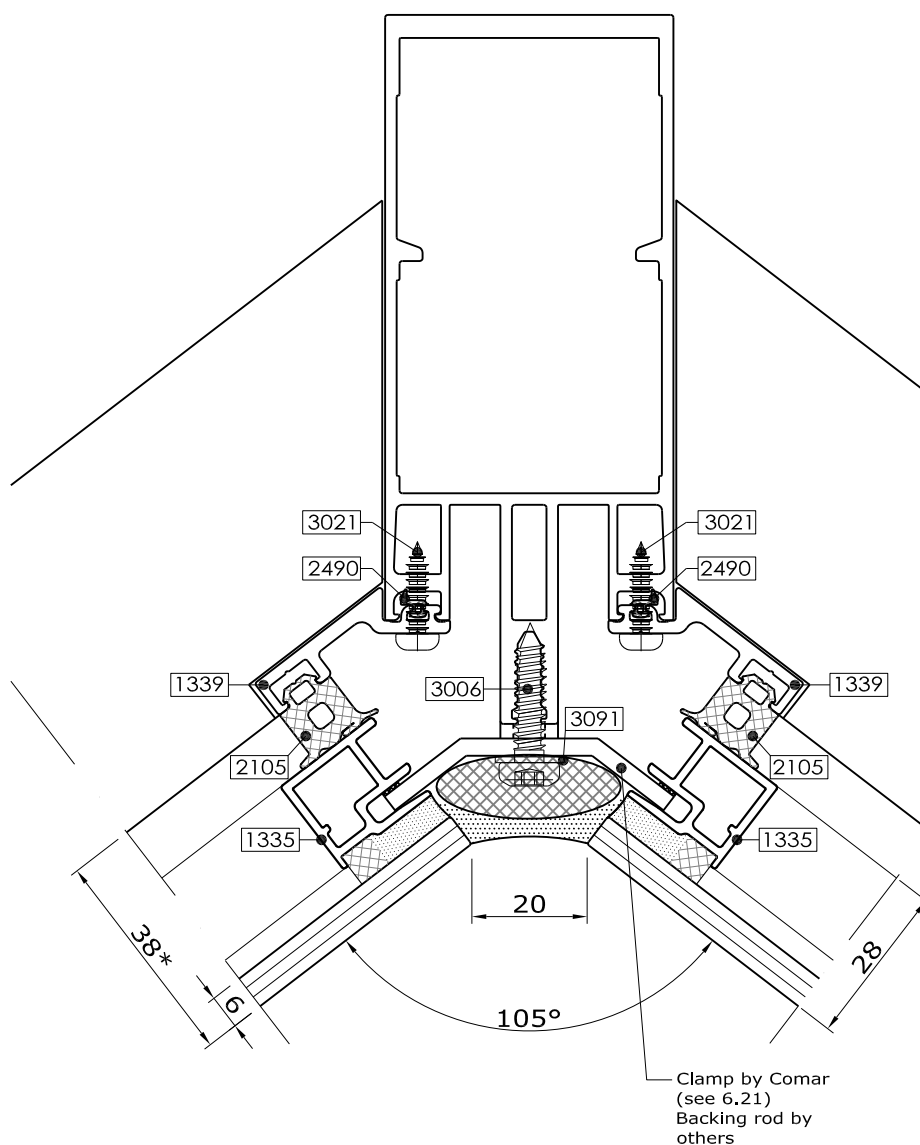


Changes reserved
Sous reserve de modifications
Änderungen vorbehalten

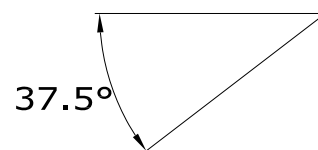
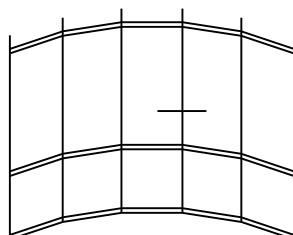
Mullion detail Facetted facade - Single glazed 37.5° nominal



2.82



* Refer to Glazing Chart for glazing options

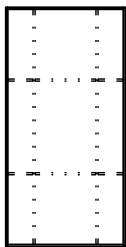


comar

ARCHITECTURAL ALUMINIUM SYSTEMS

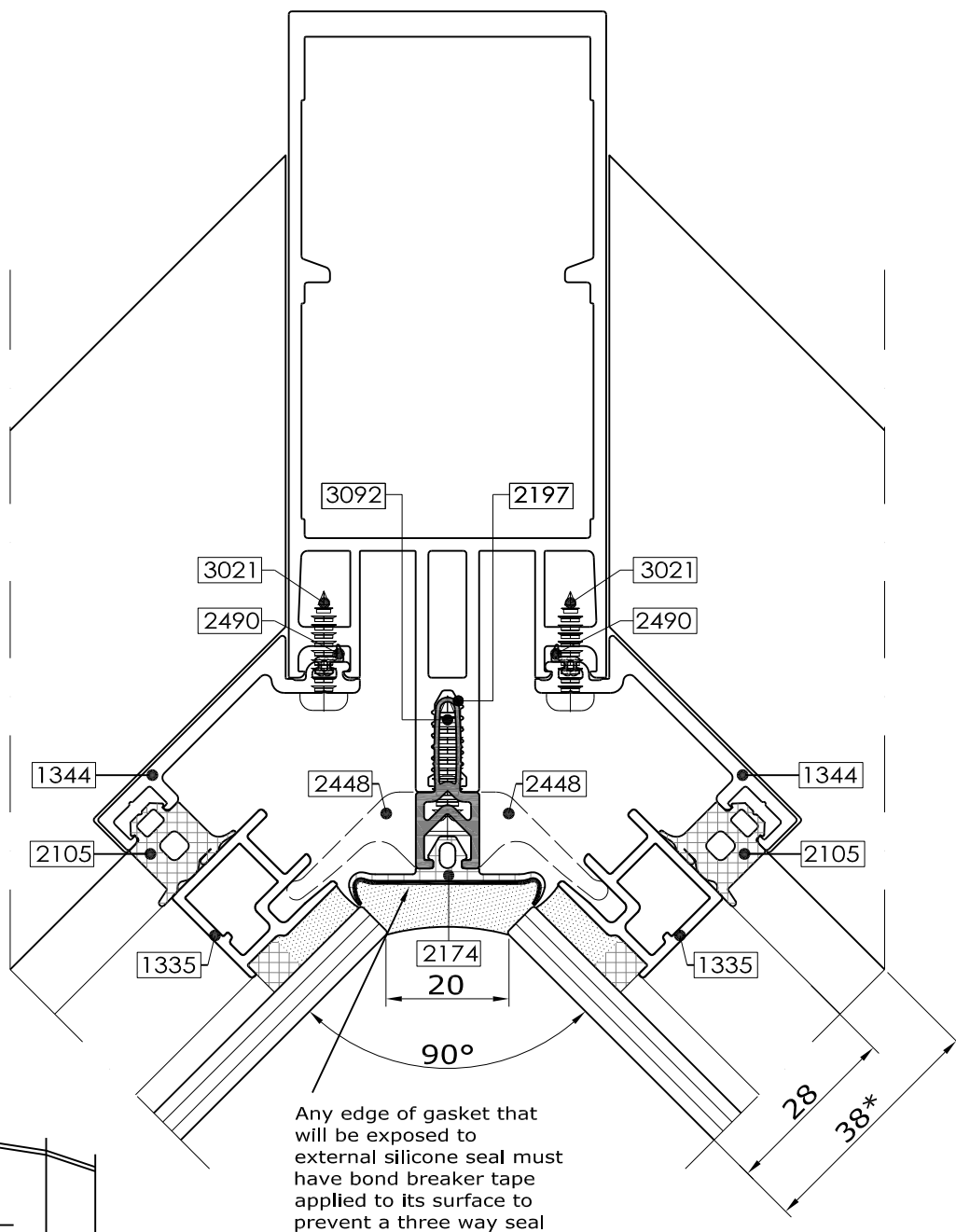
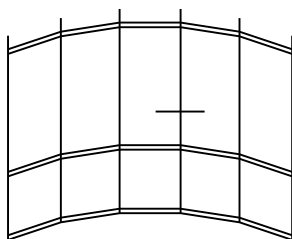
2

Mullion detail, Facetted facade - Single glazed 45° nominal

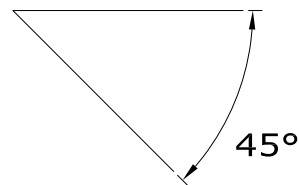


2.83

Fabricators Guide



* Refer to Glazing Chart for glazing options



comar

ARCHITECTURAL ALUMINIUM SYSTEMS

Changes reserved
Sous reserve de modifications
Änderungen vorbehalten

Issue: 04
Date : 01-14

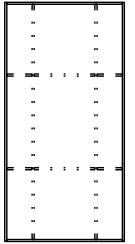
Copyright and ownership of this drawing is vested in EFT,
Euro Facade Systems Ltd, whose prior written consent is required
for its use, reproduction or for publication to any third party.
All other rights reserved. Subject to modifications.

2

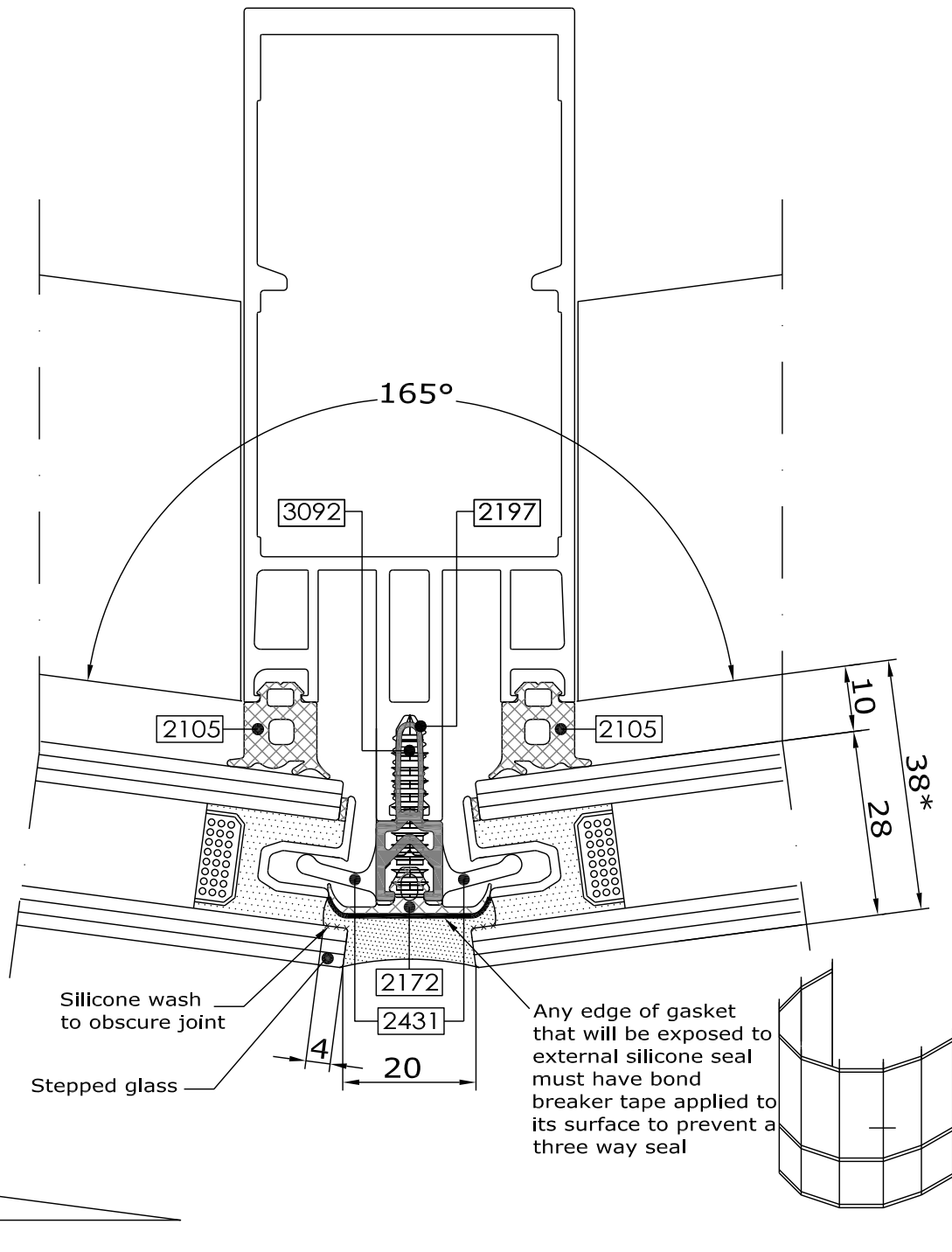
Typical details

Comar 6EFT

Mullion detail
Facetted facade
7.5° maximum



2.84



Fabricators Guide

* Refer to Glazing Chart for glazing options

Changes reserved
Sous reserve de modifications
Änderungen vorbehalten

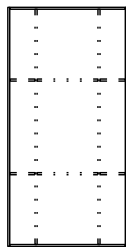
Issue: 04
Date :01-14

Typical details

2

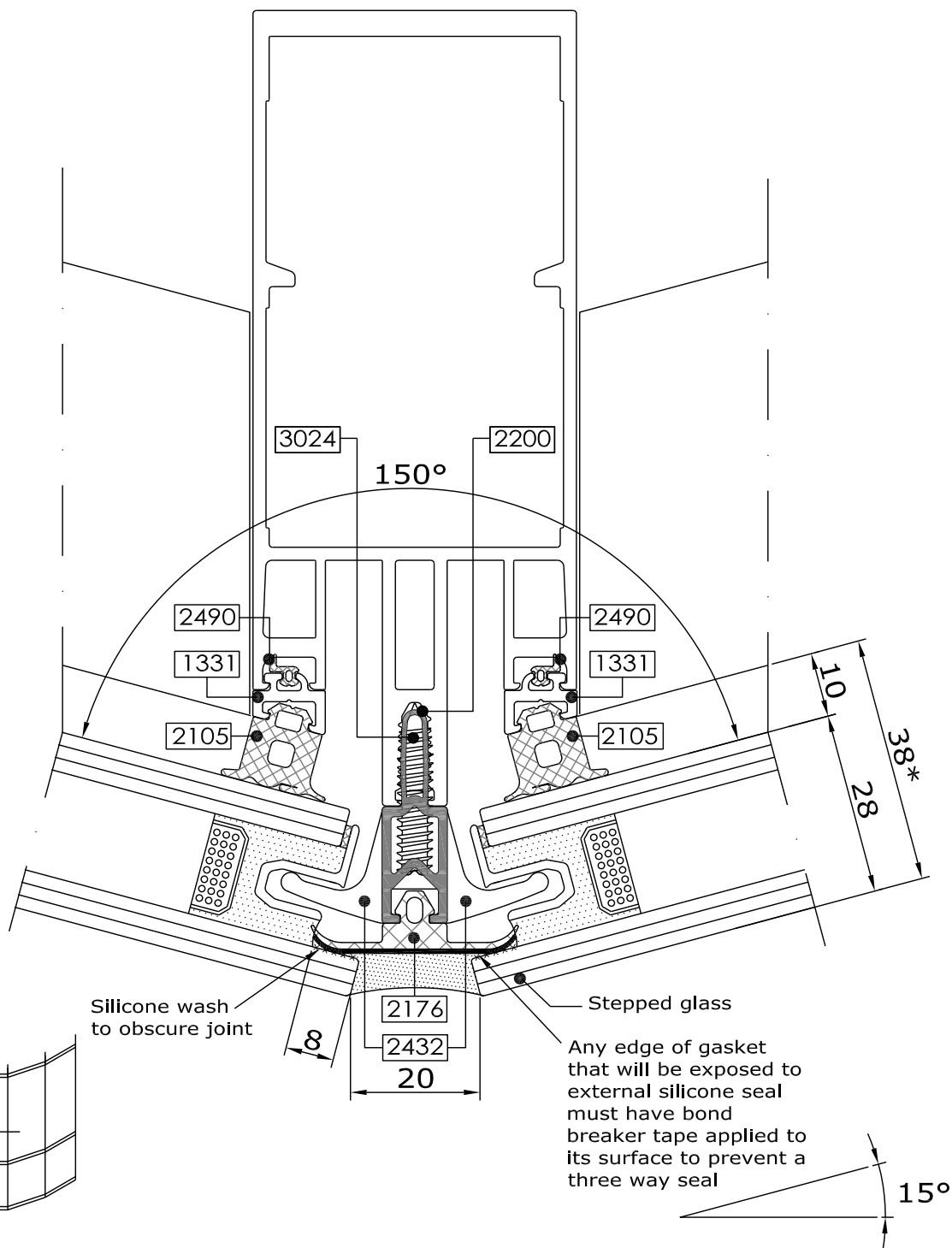
Comar 6EFT

Mullion detail
Facetted facade
15° nominal



2.85

Fabricators Guide



* Refer to Glazing Chart for glazing options



comar

ARCHITECTURAL ALUMINIUM SYSTEMS

Changes reserved
Sous reserve de modifications
Änderungen vorbehalten

Issue: 04
Date : 01-14

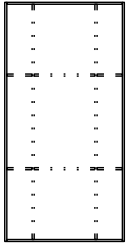
Copyright and ownership of this drawing is vested in EFT,
Euro Facade Systems Ltd, whose prior written consent is required
for its use, reproduction or for publication to any third party.
All other rights reserved. Subject to modifications.

2

Typical details

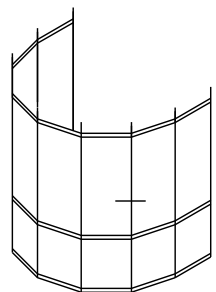
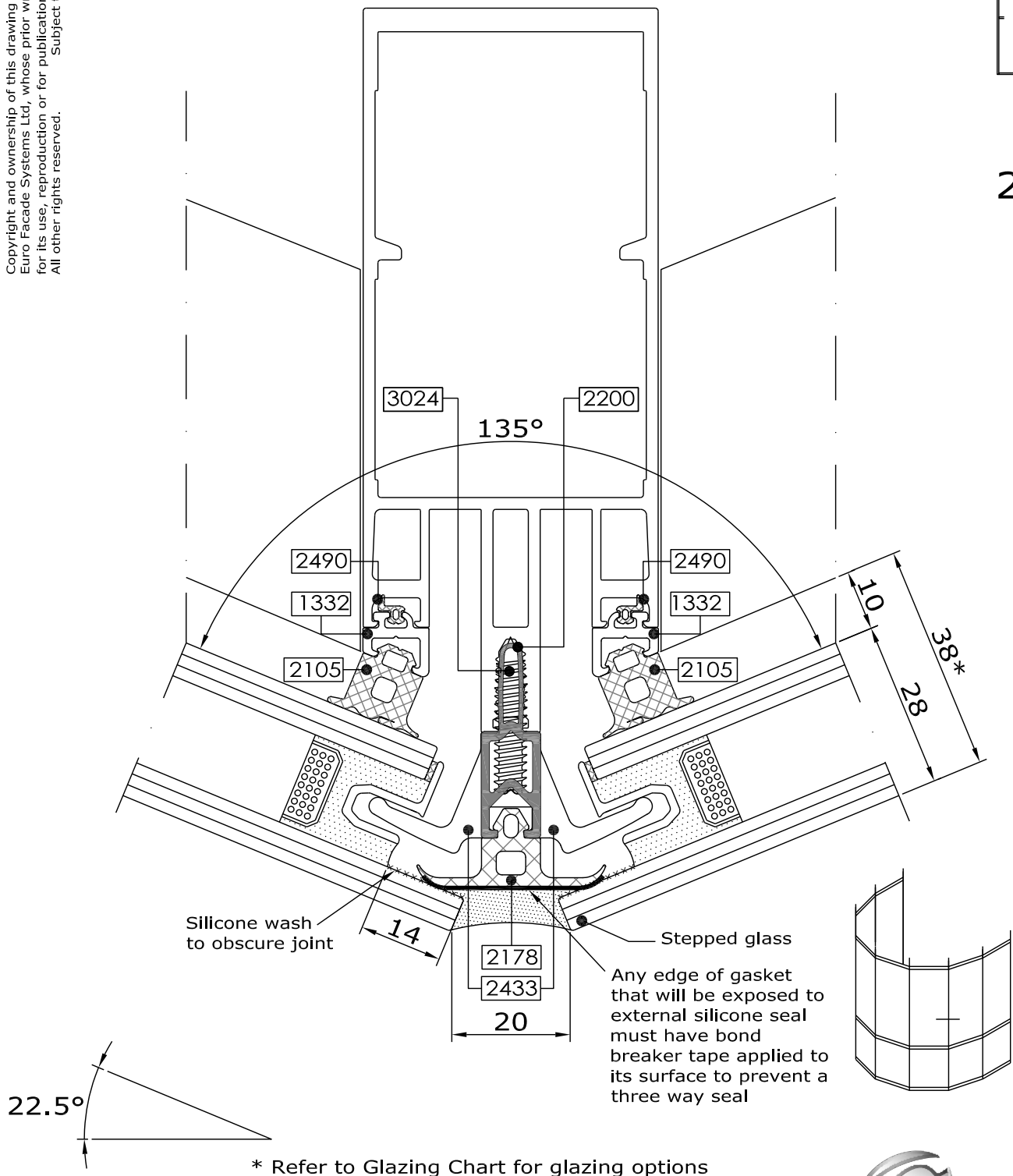
Mullion detail
Facetted facade
22.5° nominal

Comar 6EFT



2.86

Fabricators Guide



Changes reserved
Sous reserve de modifications
Änderungen vorbehalten

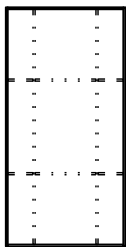
Issue: 04
Date :01-14

Typical details

2

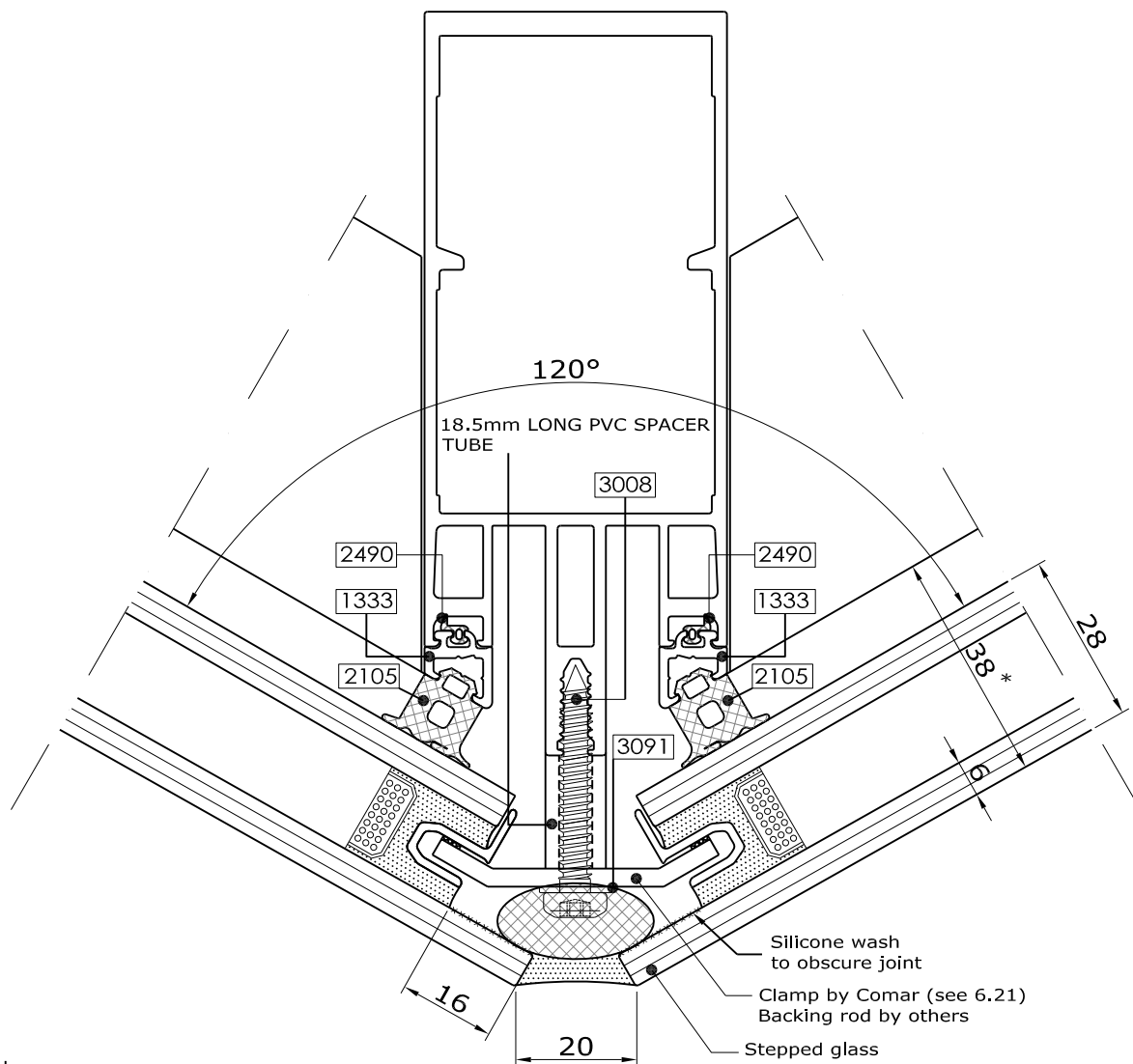
Comar 6EFT

Mullion detail
Facetted facade
30° nominal

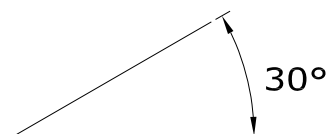
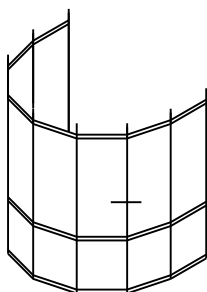


2.87

Fabricators Guide



* Refer to Glazing Chart for glazing options



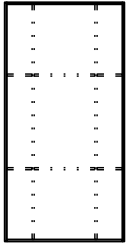
Copyright and ownership of this drawing is vested in EFT, Euro Facade Systems Ltd, whose prior written consent is required for its use, reproduction or for publication to any third party. All other rights reserved. Subject to modifications.

2

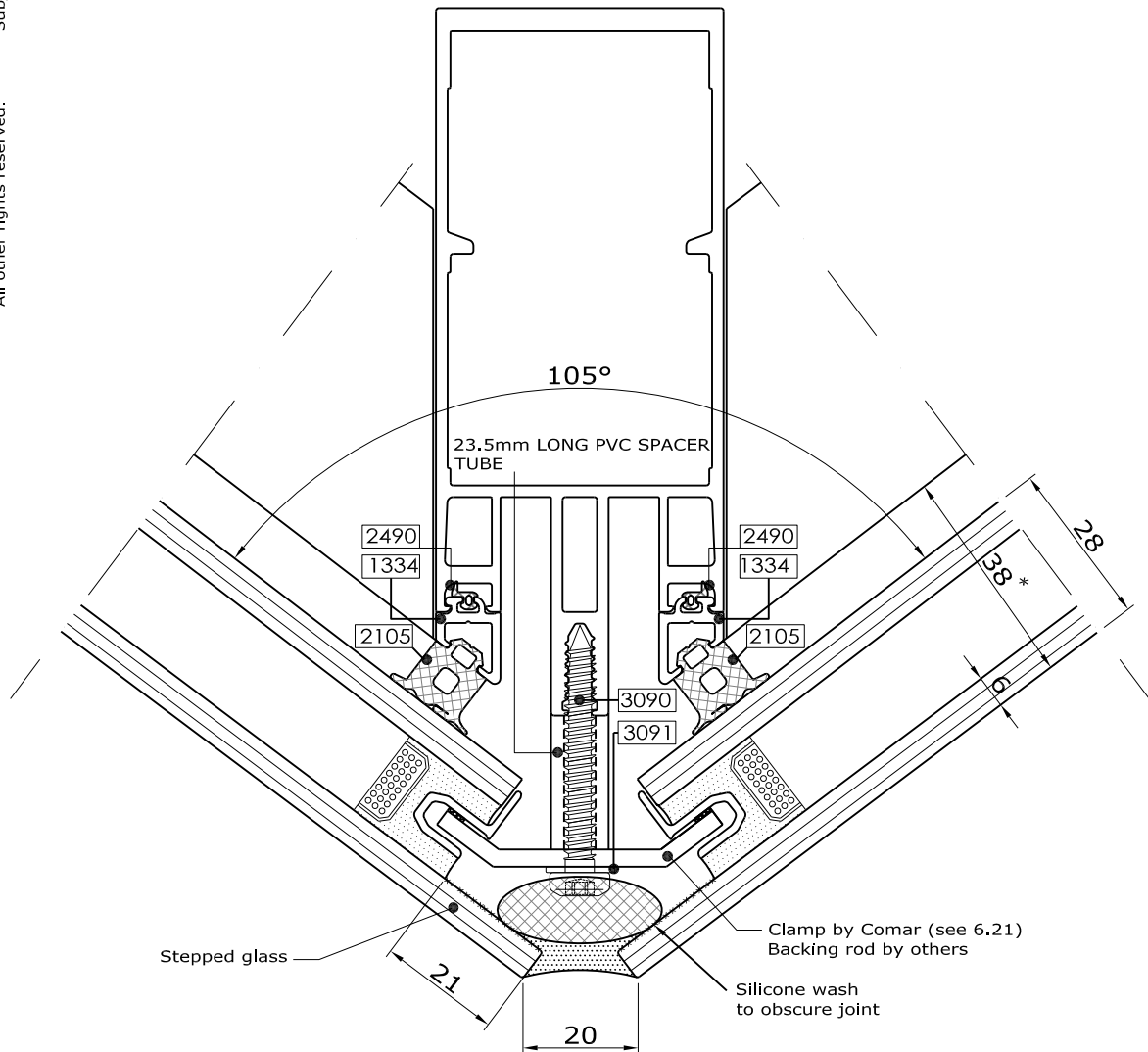
Typical details

Mullion detail
Facetted facade
37.5° nominal

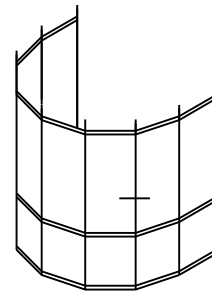
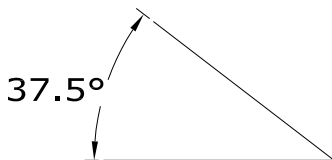
Comar 6EFT



2.88



* Refer to Glazing Chart for glazing options



comar

ARCHITECTURAL ALUMINIUM SYSTEMS

Changes reserved
Sous reserve de modifications
Änderungen vorbehalten

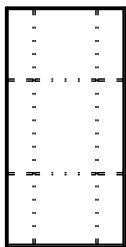
Issue: 04
Date :01-14

Typical details

2

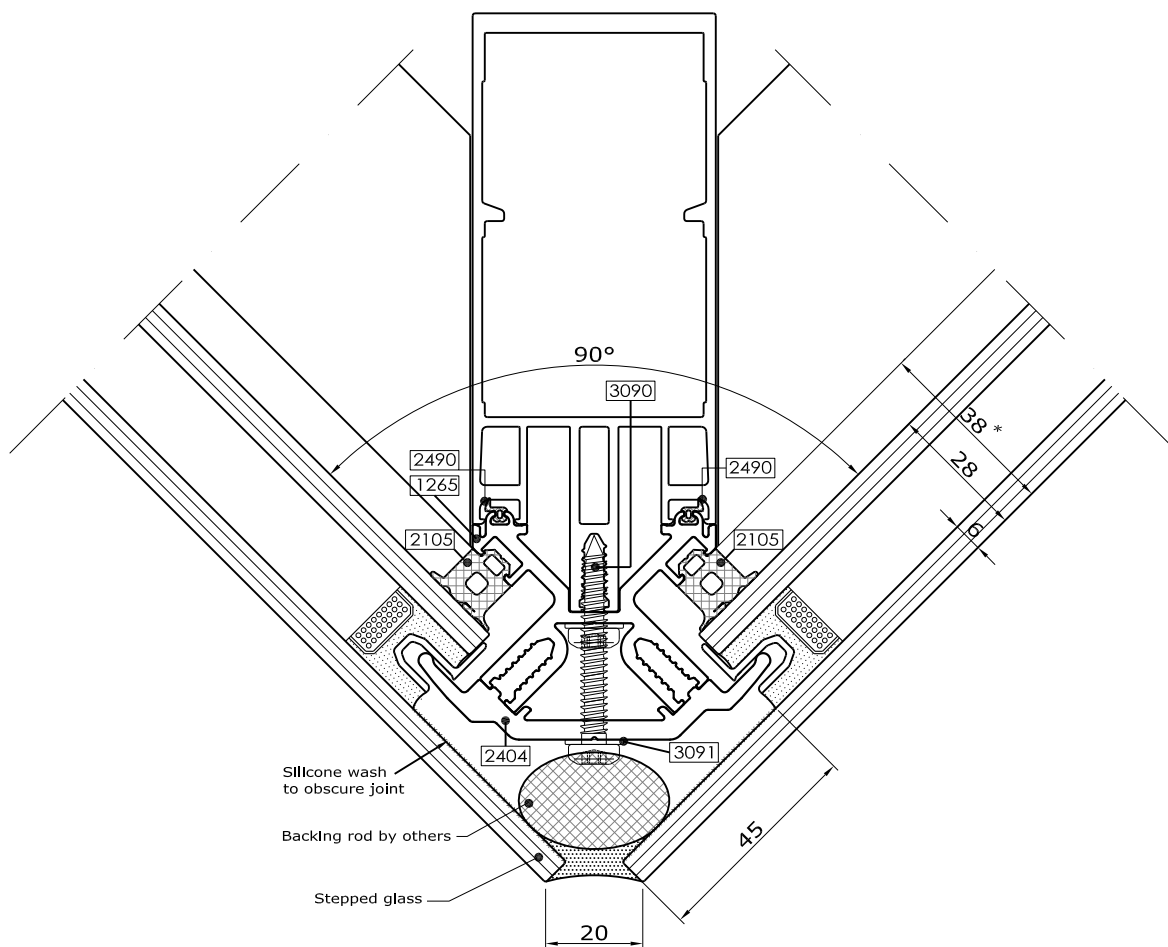
Comar 6EFT

Mullion detail
Facetted facade
45° nominal

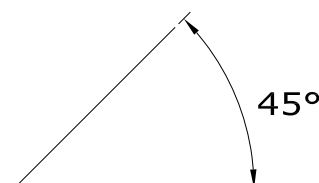
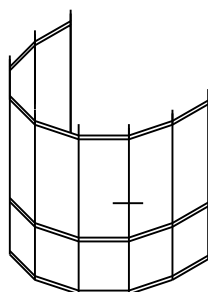


2.89

Fabricators Guide



* Refer to Glazing Chart for glazing options



Copyright and ownership of this drawing is vested in EFT, Euro Facade Systems Ltd, whose prior written consent is required for its use, reproduction or for publication to any third party. All other rights reserved. Subject to modifications.



comar

ARCHITECTURAL ALUMINIUM SYSTEMS

Changes reserved
Sous reserve de modifications
Änderungen vorbehalten

Issue: 04
Date : 01-14

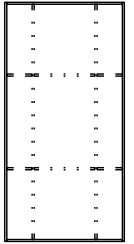
Copyright and ownership of this drawing is vested in EFT,
Euro Facade Systems Ltd, whose prior written consent is required
for its use, reproduction or for publication to any third party.
All other rights reserved.

2

Typical details

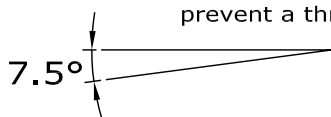
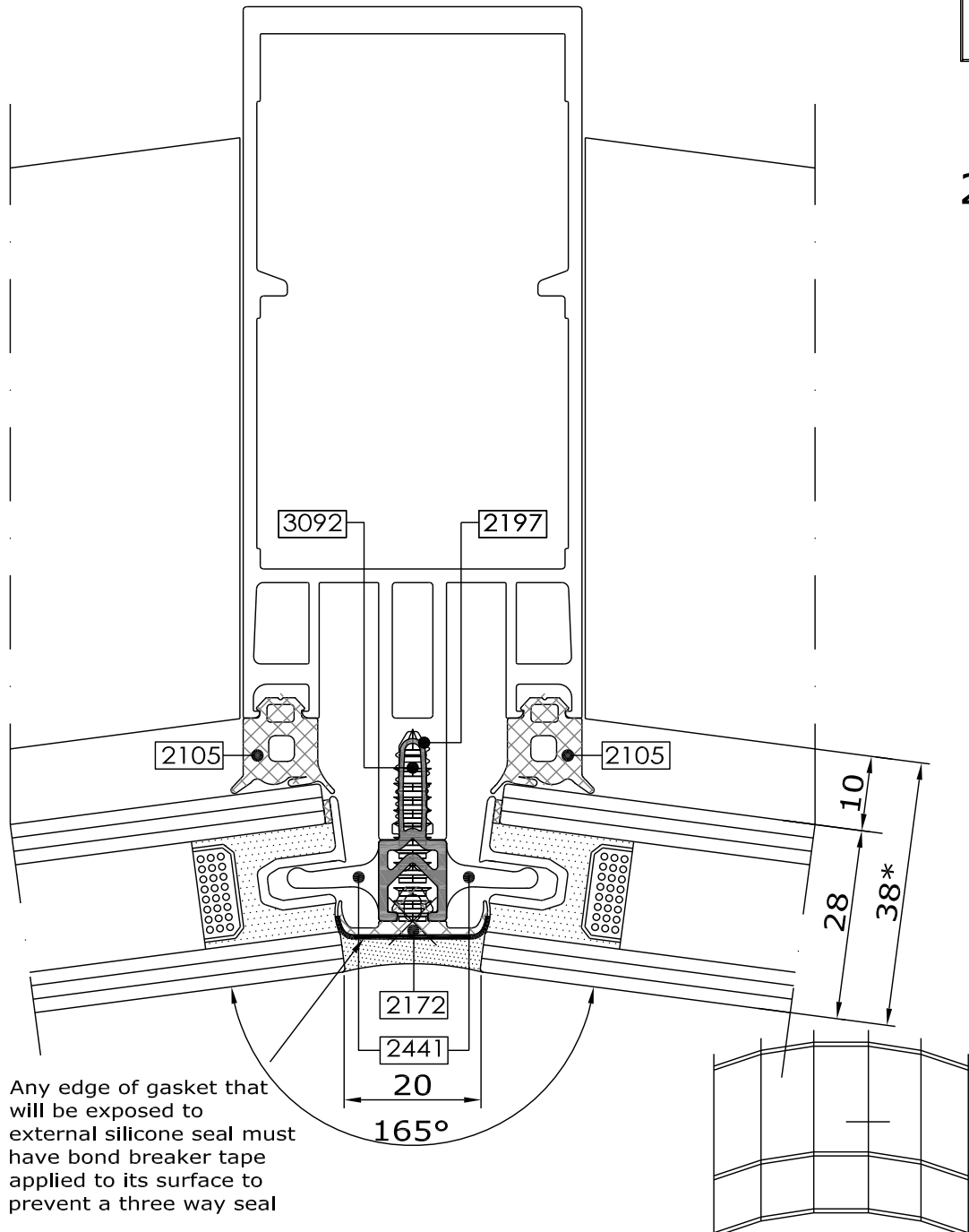
Comar 6EFT

Mullion detail
Facetted facade
7.5° maximum



2.90

Fabricators Guide



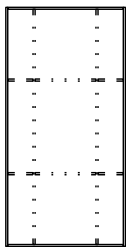
* Refer to Glazing Chart for glazing options

Changes reserved
Sous reserve de modifications
Änderungen vorbehalten

Issue: 04
Date :01-14

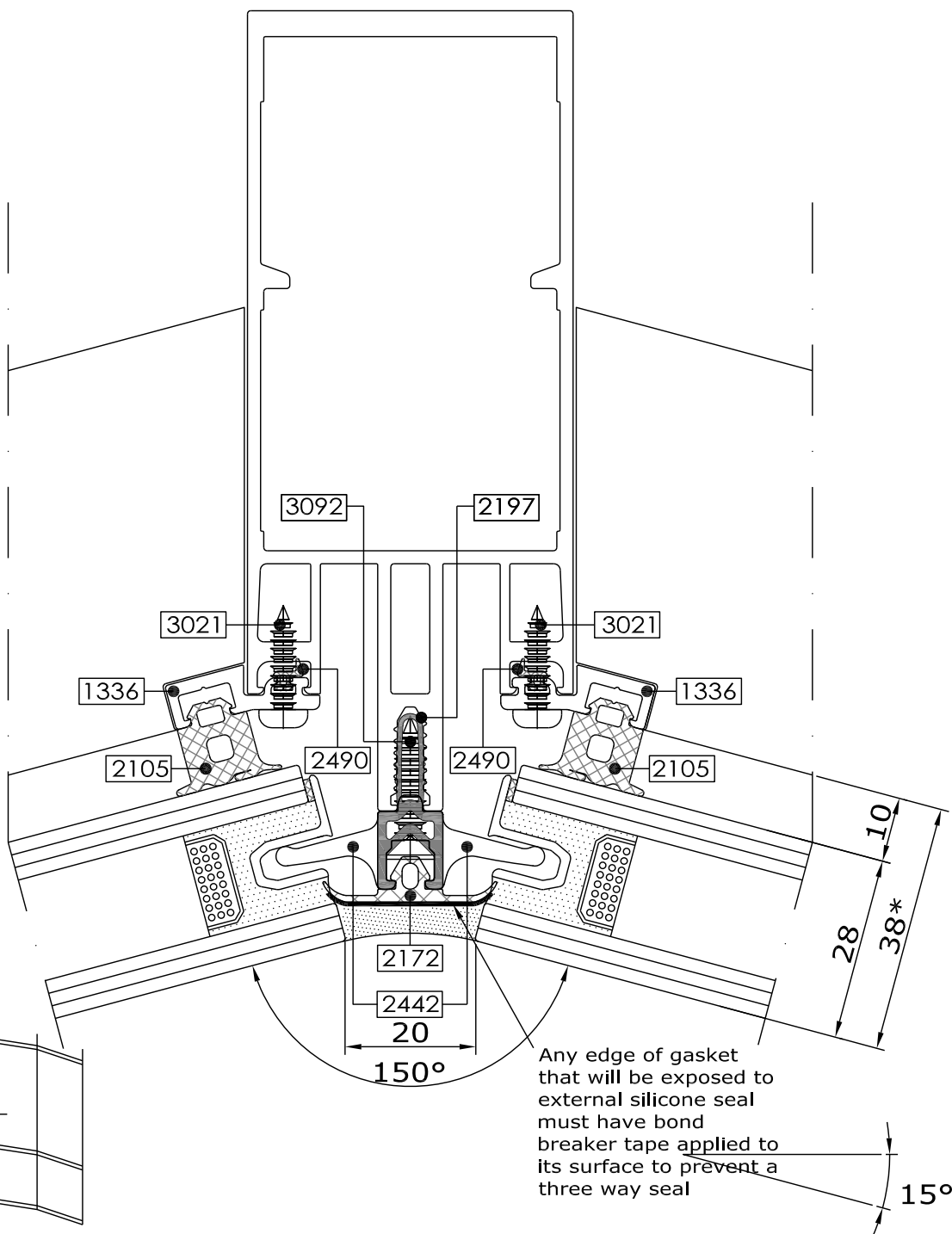
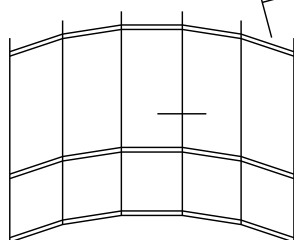
2

Mullion detail
Facetted facade
15° nominal



2.91

Fabricators Guide



Copyright and ownership of this drawing is vested in EFT,
Euro Facade Systems Ltd, whose prior written consent is required
for its use, reproduction or for publication to any third party.
All other rights reserved. Subject to modifications.



comar

ARCHITECTURAL ALUMINIUM SYSTEMS

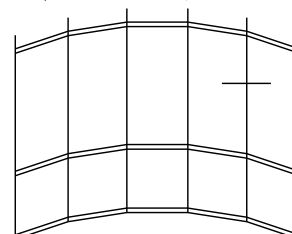
Changes reserved
Sous reserve de modifications
Änderungen vorbehalten

Issue: 04
Date : 01-14

[illegible]

2.92

Fabricators Guide



* Refer to Glazing Chart for glazing options

Copyright and ownership of this drawing is vested in EFT,
Euro Facade Systems Ltd, whose prior written consent is required
for its use, reproduction or for publication to any third party.
All other rights reserved. Subject to modifications.

Changes reserved
Sous reserve de modifications
Änderungen vorbehalten

Issue: 04
Date :01-14

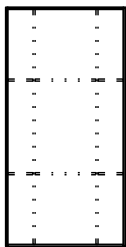


Typical details

2

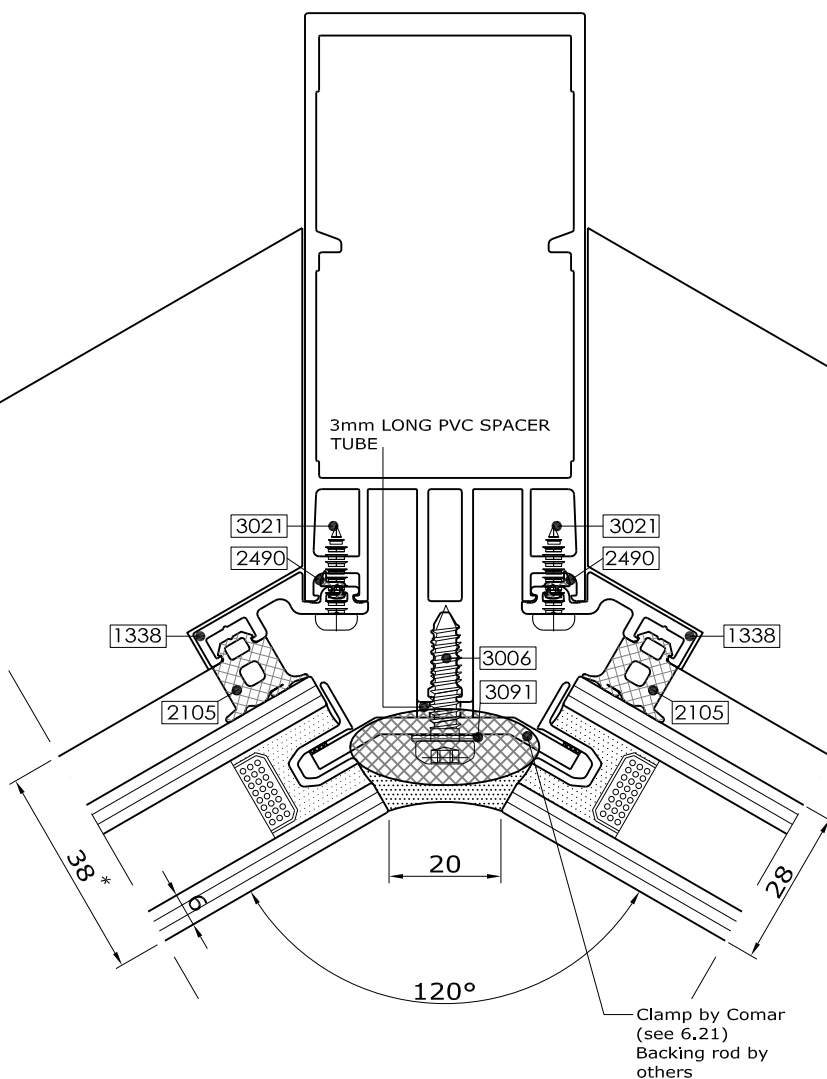
Comar 6EFT

Mullion detail
Facetted facade
30° nominal

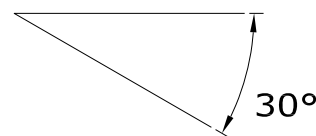
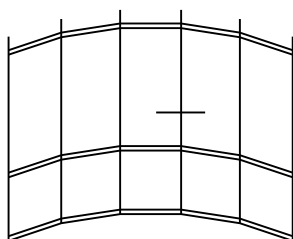


2.93

Fabricators Guide



* Refer to Glazing Chart for glazing options



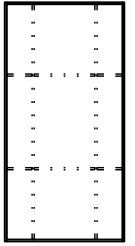
Copyright and ownership of this drawing is vested in EFT,
Euro Facade Systems Ltd, whose prior written consent is required
for its use, reproduction or for publication to any third party.
All other rights reserved.

Mullion detail Facetted facade 37.5° nominal

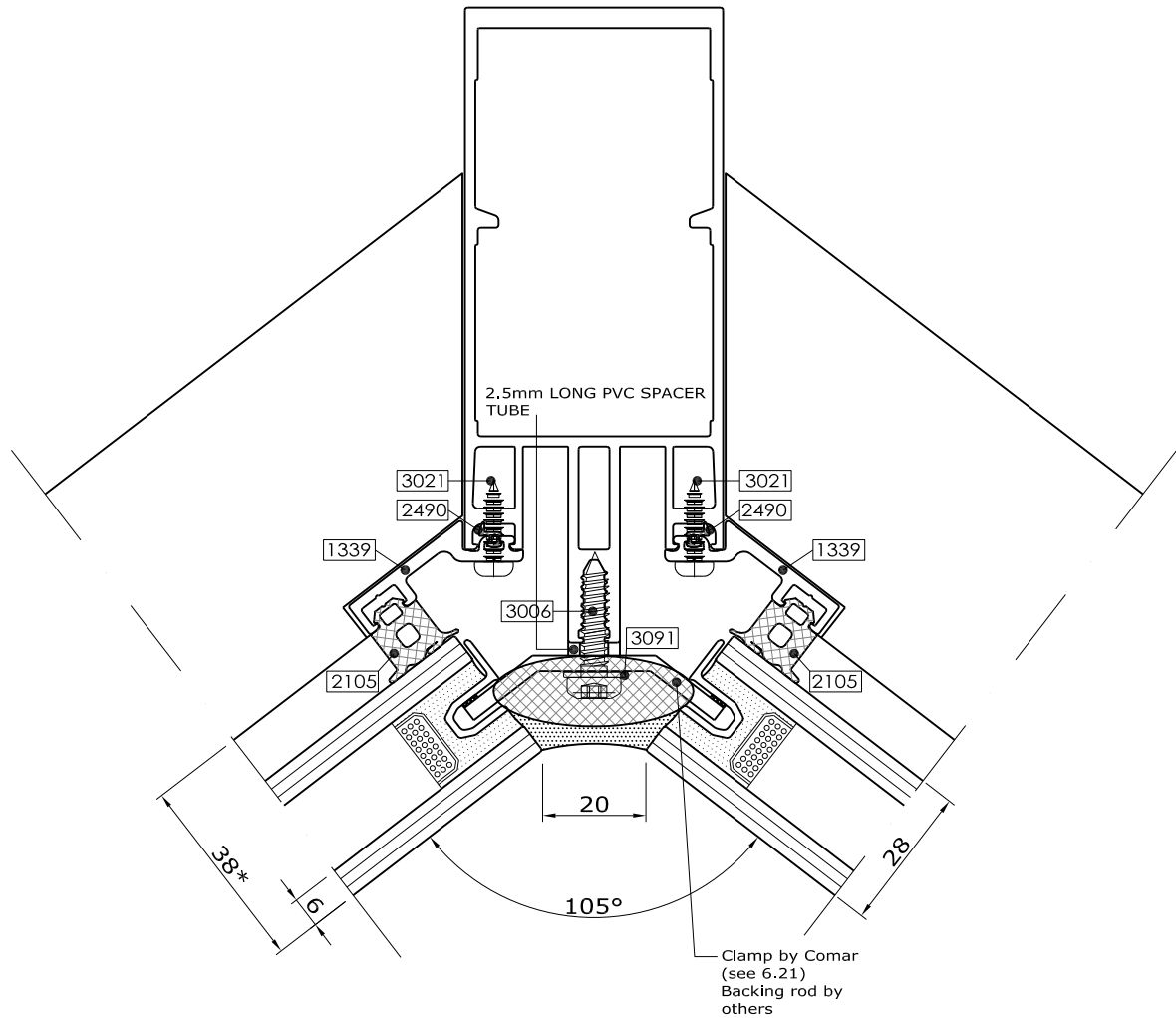
2

Typical details

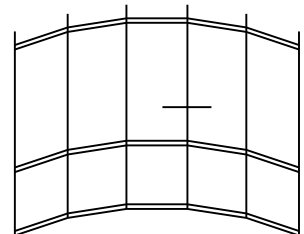
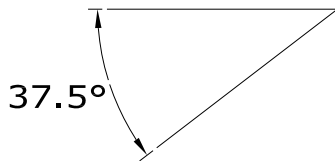
Comar 6EFT



2.94



* Refer to Glazing Chart for glazing options



Fabricators Guide

Changes reserved
Sous reserve de modifications
Änderungen vorbehalten

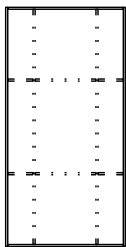
Issue: 04
Date :01-14

Typical details

2

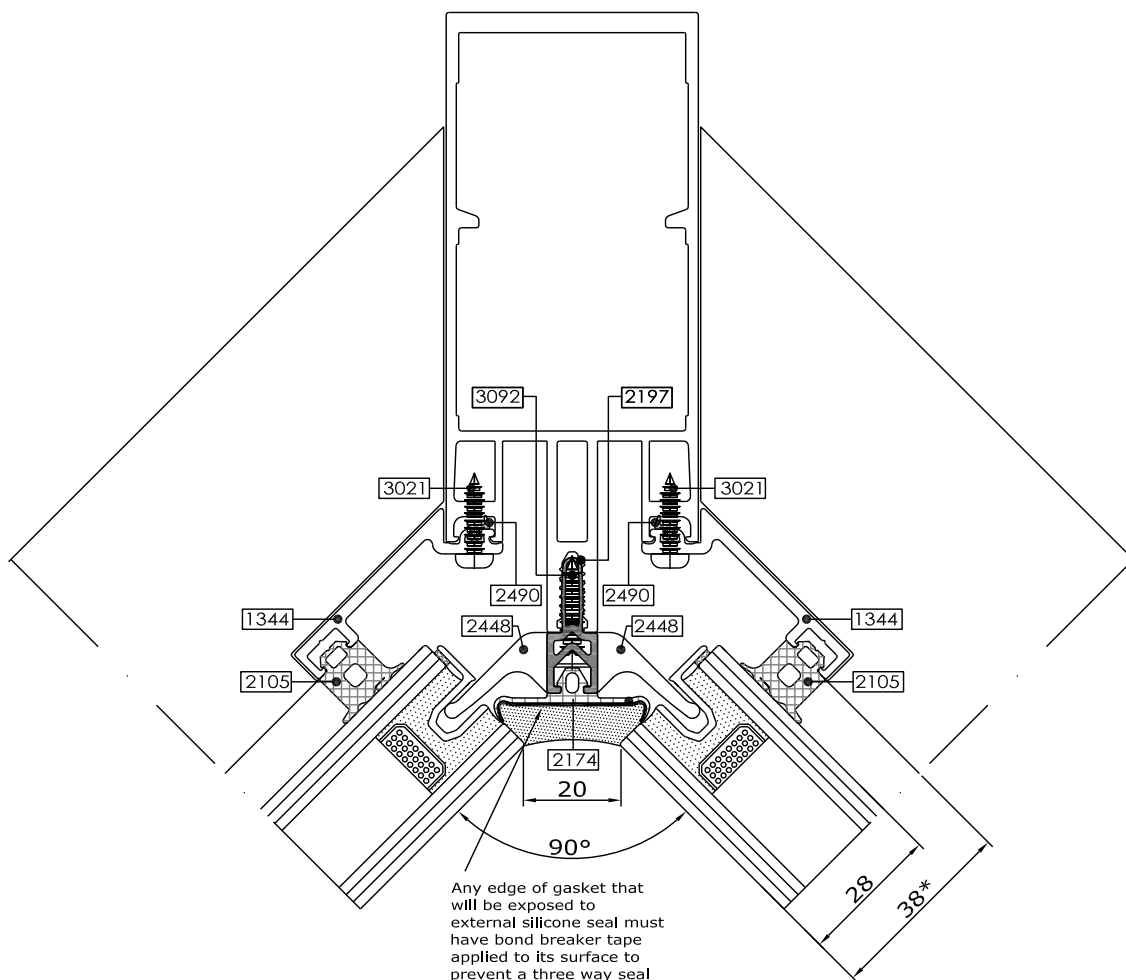
Comar 6EFT

Mullion detail
Facetted facade
45° nominal

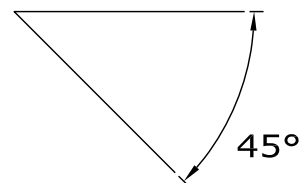
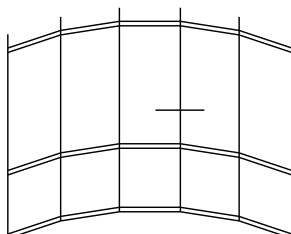


2.95

Fabricators Guide

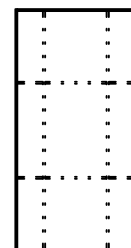


* Refer to Glazing Chart for glazing options

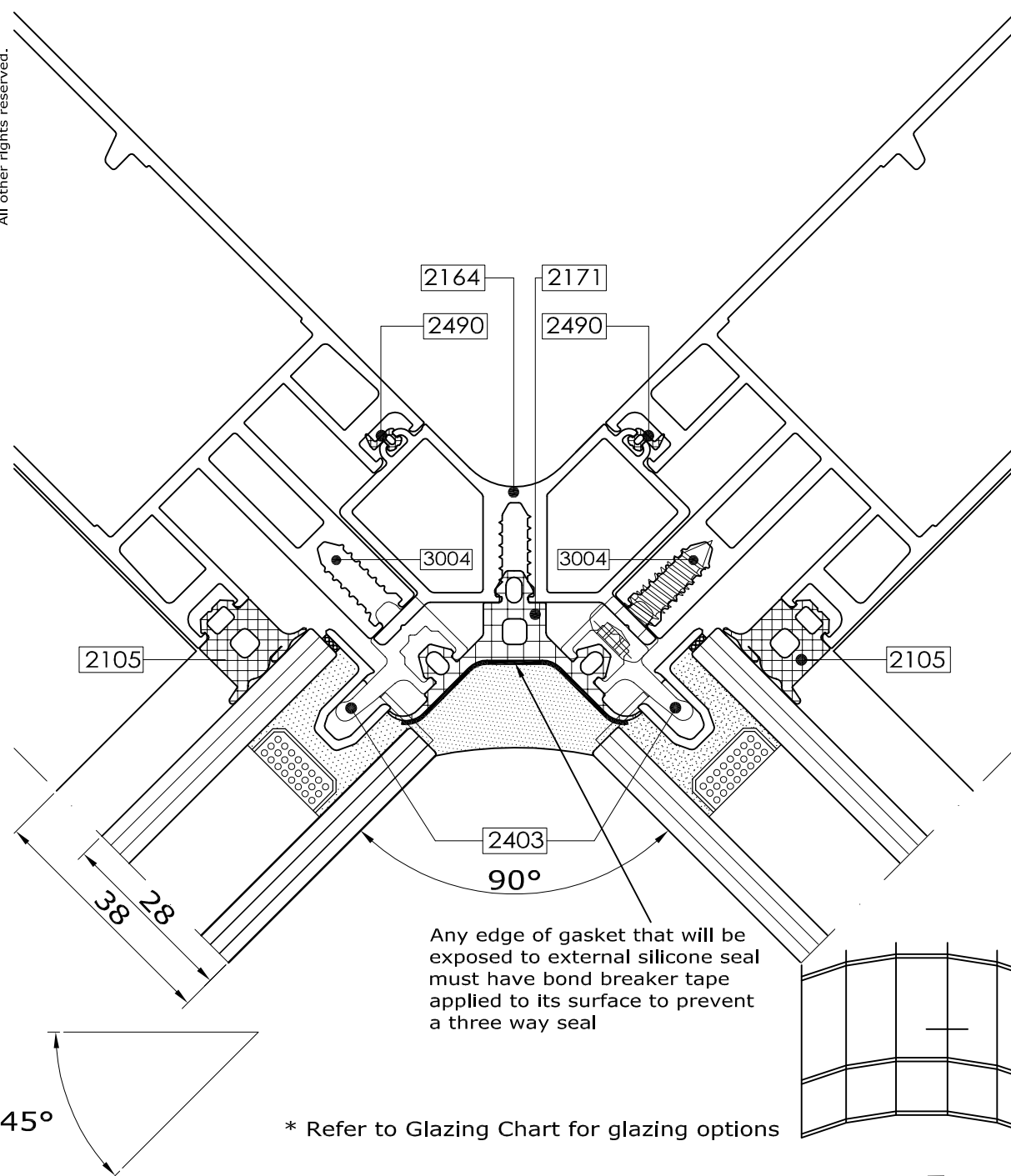


Mullion detail Facetted facade 45° nominal

Copyright and ownership of this drawing is vested in EFT, Euro Facade Systems Ltd, whose prior written consent is required for its use, reproduction or for publication to any third party. All other rights reserved. Subject to modifications.



2.96



Changes reserved
Sous reserve de modifications
Änderungen vorbehalten

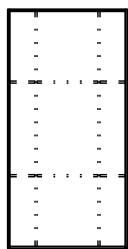
Issue: 04
Date :09-14

Typical details

2

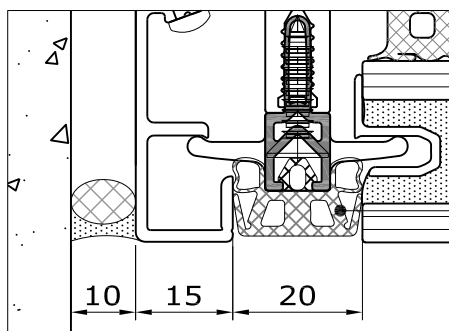
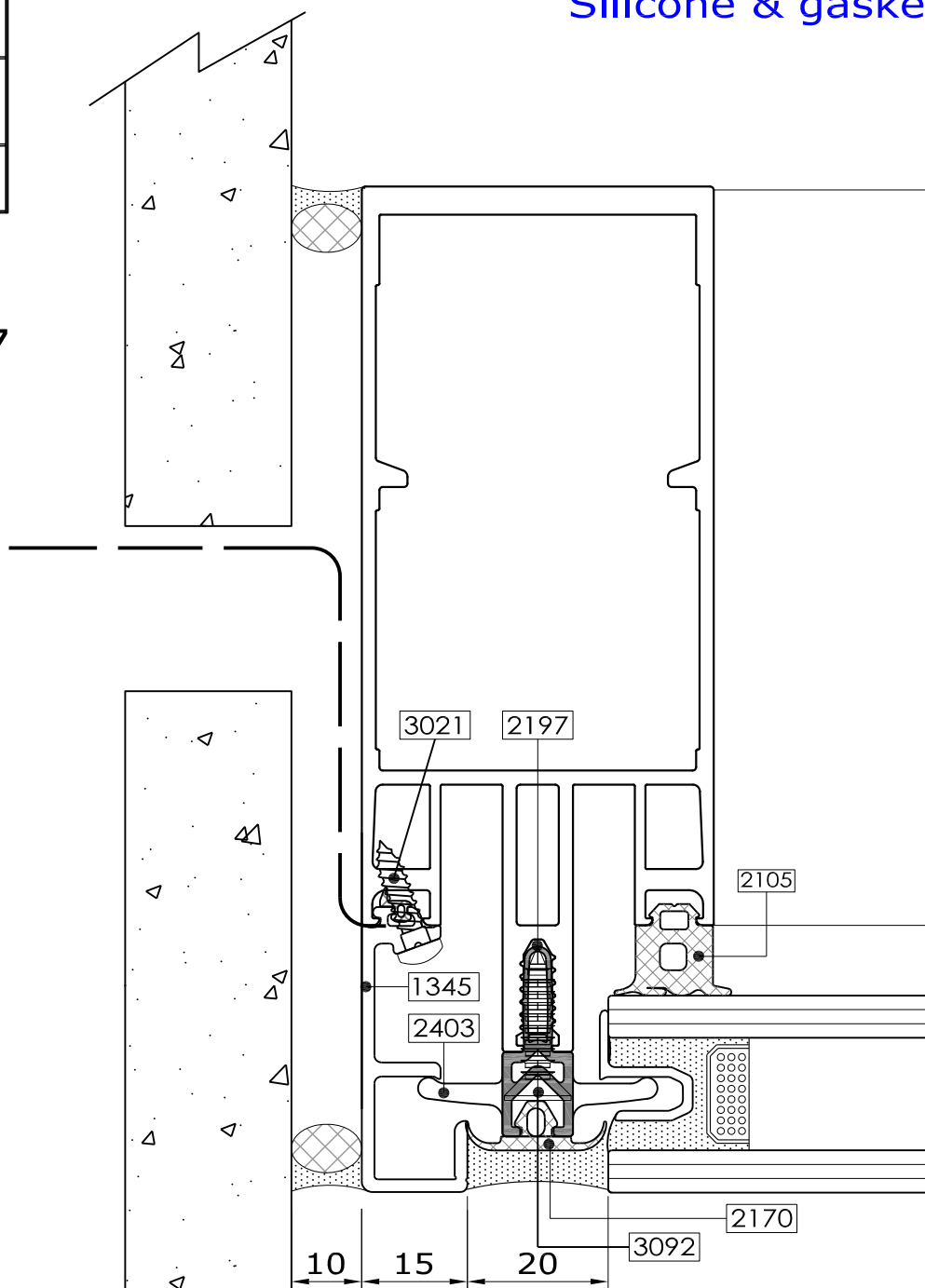
Comar 6EFT

Mullion perimeter detail
Silicone & gasket seal



2.97

Fabricators Guide



Also available
with gasket seal
using EFT
gasket 2175

Changes reserved
Sous reserve de modifications
Änderungen vorbehalten



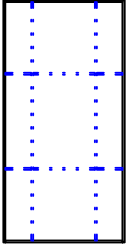
comar

ARCHITECTURAL ALUMINIUM SYSTEMS

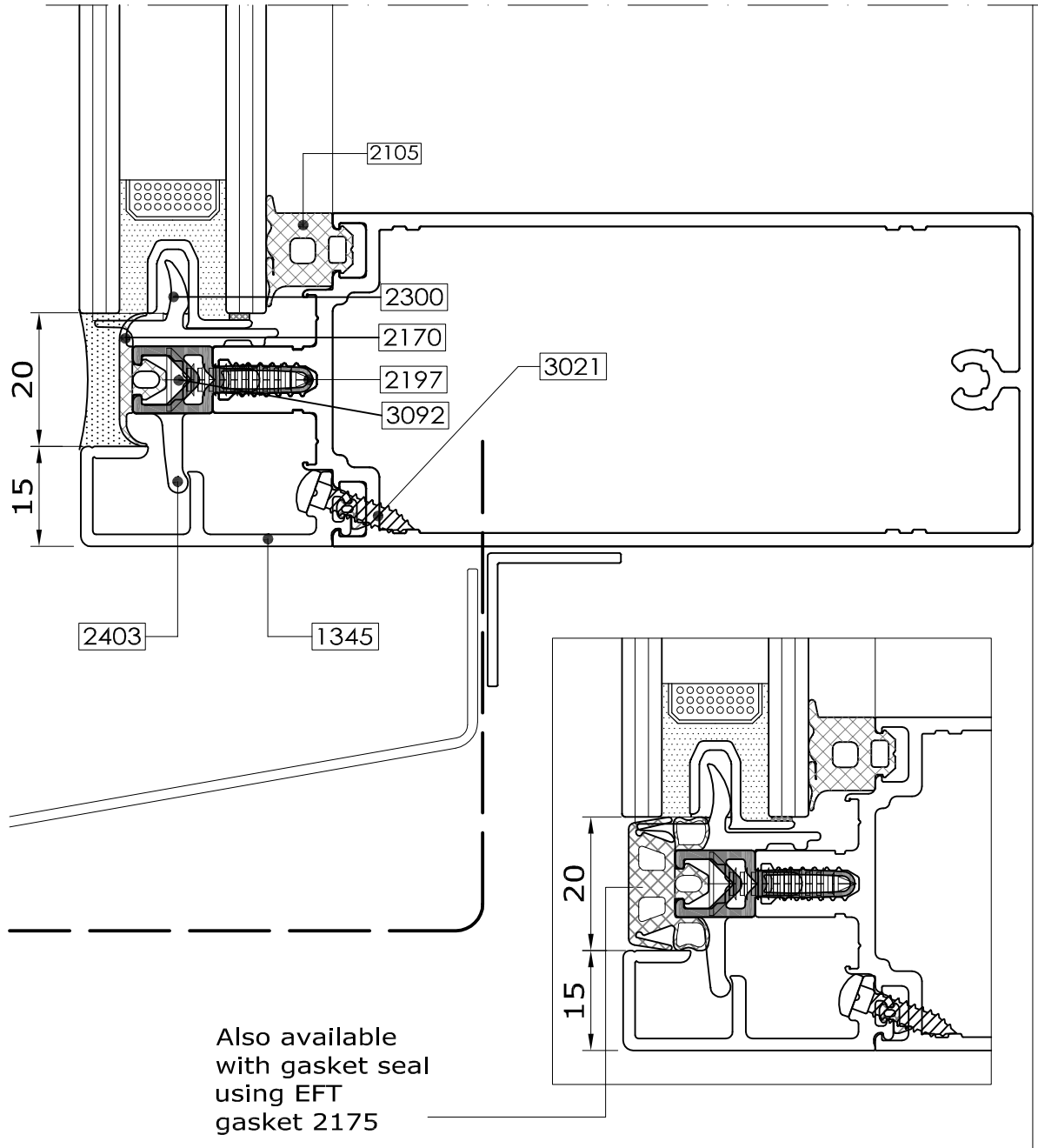
Issue: 04
Date : 01-14

Copyright and ownership of this drawing is vested in EFT,
Euro Facade Systems Ltd, whose prior written consent is required
for its use, reproduction or for publication to any third party.
All other rights reserved. Subject to modifications.

Transom sill detail Silicone & gasket seal



2.98

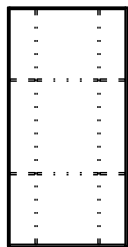


Typical details

2

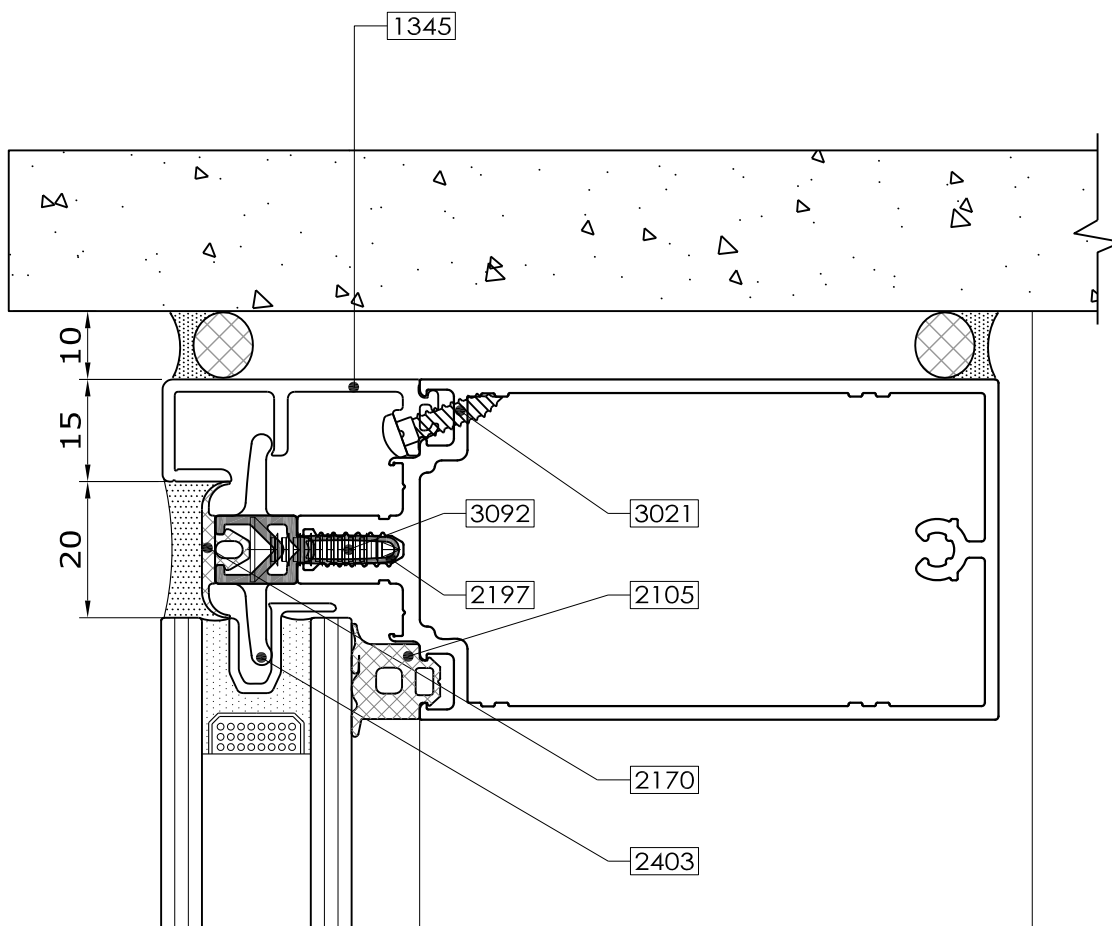
Comar 6EFT

Transom head detail
Silicone & gasket seal

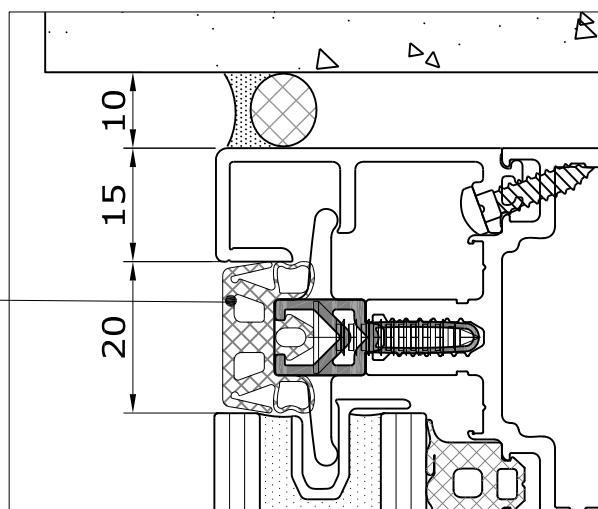


2.99

Fabricators Guide



Also available
with gasket seal
using EFT
gasket 2175



Copyright and ownership of this drawing is vested in EFT,
Euro Facade Systems Ltd, whose prior written consent is required
for its use, reproduction or for publication to any third party.
All other rights reserved. Subject to modifications.



comar

ARCHITECTURAL ALUMINIUM SYSTEMS

Changes reserved
Sous reserve de modifications
Änderungen vorbehalten

Issue: 04
Date : 01-14