

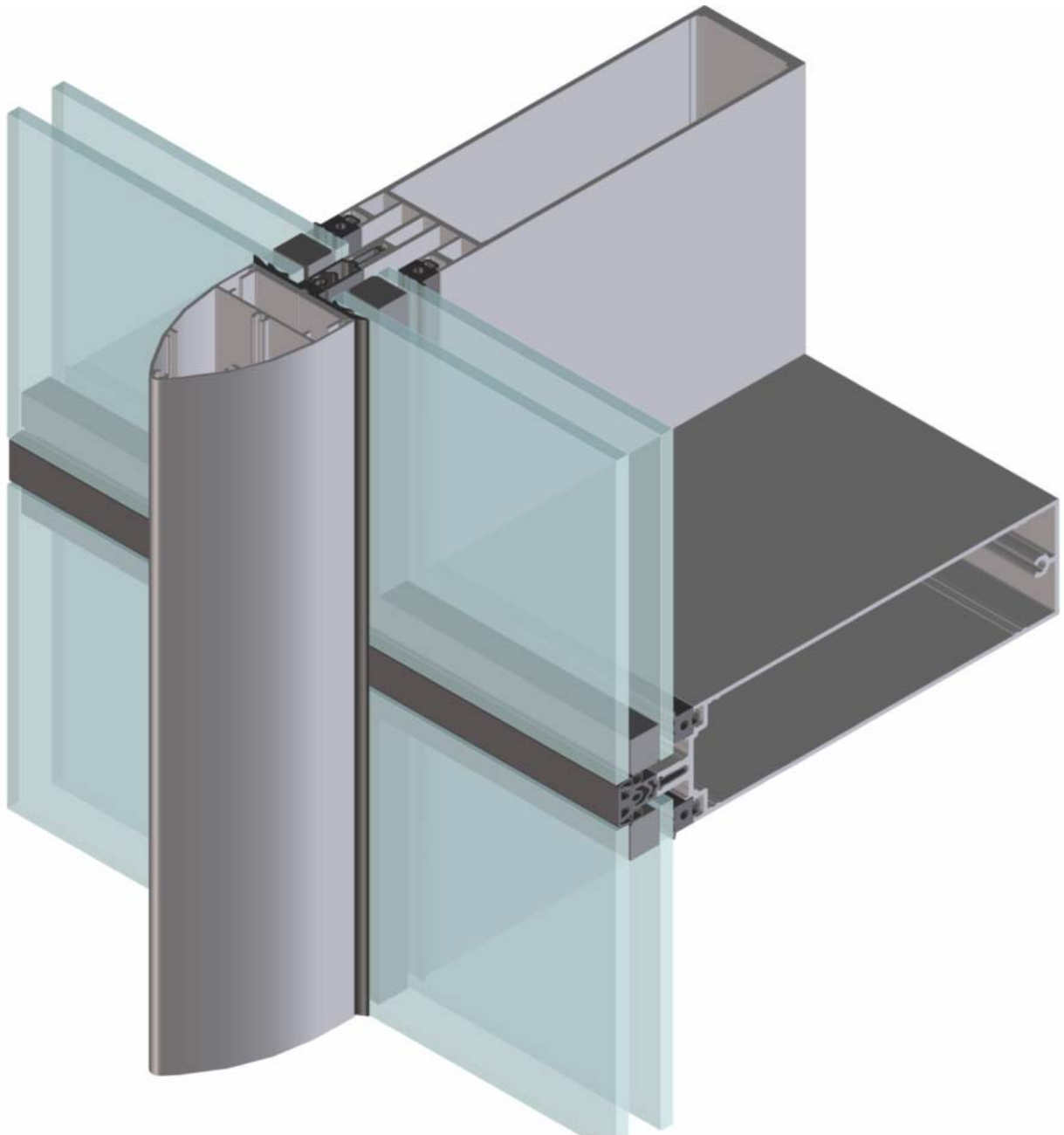
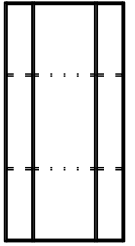
Copyright and ownership of this drawing is vested in EFT,
Euro Facade Systems Ltd, whose prior written consent is required
for its use, reproduction or for publication to any third party.
All other rights reserved.

2sided SGV

2

Typical detail

Comar 6EFT



Fabricators Guide

Changes reserved
Sous reserve de modifications
Änderungen vorbehalten

Issue: 04
Date :01-14

Introduction

Comar 6 EFT 2 Sided SGV

Comar 6 EFT 2 Sided Vertical Curtain Wall System enables the construction of attractive 2 sided structural glazed curtain walling, with the benefits of slim horizontal sightlines or, by using different vertical cover cap design features.

This thermally insulated system consists of standard 50 mm profiles, bespoke profiles are available upon request.

Specification Summary

Comar 6 EFT 2 Sided Vertical Curtain Walling

is a mullion drained, thermally broken curtain wall system, which consists of 50 mm mullions and transoms suitable for facades.

The external horizontal sightline (joint seal) is 20 mm. The joint seal can be made from EPDM, compatible with most silicone sealants or this can be made out of silicone sealant.

Various cover caps are available for this system. The smallest sightline can be achieved using a 50 mm wide double chamfered cap to provide a visible front face of 16 mm

Glazing

The system is externally glazed. Glazing should conform to the requirements of BS 6262 for thickness, type, wind resistance, safety and security.

Drainage

The system is mullion drained, achieved by meeting the requirements of "ventilated and drained glazing system" as specified in BS 6262

Thermal Insulation

Class 2.1 in accordance with DIN 4108 (2.0-2.8 W/m²K) or EN ISO 10077 - 1

The thermal transmittance (Uf) W/m²K, is depending on the insulator strip, calculated as per EN ISO 10077 - 1.

Comparable with class 2.1 DIN 4108 - 4 Table 3

Sound Insulation

Dependant on the glass specification, generally the curtain wall framing reduces the figure by 2dB (A).

Materials

The system is constructed from extruded aluminium profiles, using alloy 6063 complying to the requirements of BS 1474.

The thermal barrier system is achieved by means of PVC/PP extrusion

Construction

Any instructions regarding the manufacture and installation of the system must be strictly adhered to.

Weathering

Glazing vision strips are made of EPDM conforming to BS 4255 Part 1

Performance / exposure category

The system will achieve the following criteria when manufactured, installed and glazed to EFT recommended procedures, in accordance with CWCT approved testing methods.

Classification

Air permeability:	BS EN 12152 - Class AE 750
Water tightness:	BS EN 12154 - Class RE 750
Wind resistance:	BS EN 13116 - 2400 Pa design - 3600 Pa safety

2400Pa (Pascal's) is dependant upon correct mullion and transom selection to suit span and spacing by project.

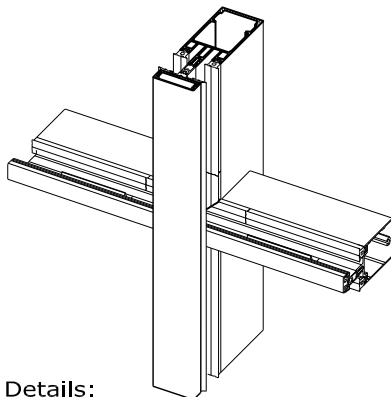
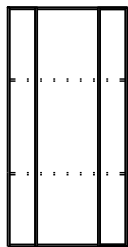
Size limitations

The size limitations of the system depends mainly on the mullion/transom members used to suit the span, spacing and wind/dead loads, which are specific for each individual project. Please refer to Comar's Technical Office for advise.

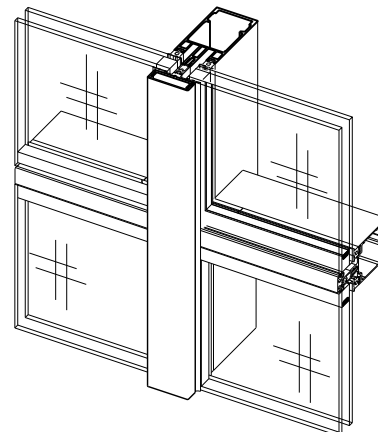
Typical details

2

Comar 6EFT

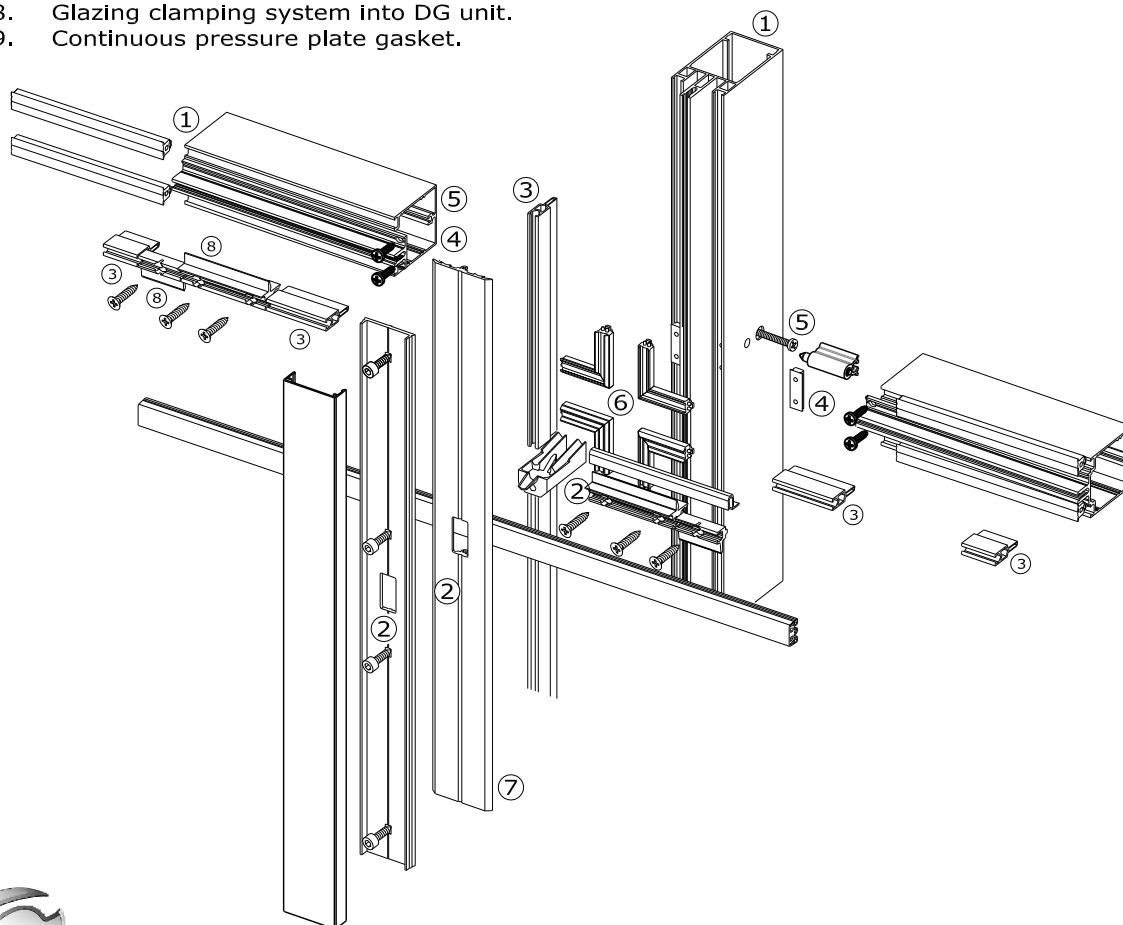


Typical Exploded Detail Vertical cover cap (2sided SGV)



Details:

1. One substructure for all curtain wall types, Fully Capped, 2 sided SGH, 2 sided SGV & 4 sided SG.
2. Controlled drainage system (mullion drained) drainage diverter/cover.
3. Thermally broken.
4. Mullion-Transom step-cut & sealed by EPDM moulding.
5. Ladder (unit) construction or stick build.
6. Moulded EPDM corners available.
7. Continuous pressure plate gasket.
8. Glazing clamping system into DG unit.
9. Continuous pressure plate gasket.



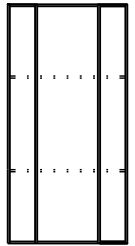
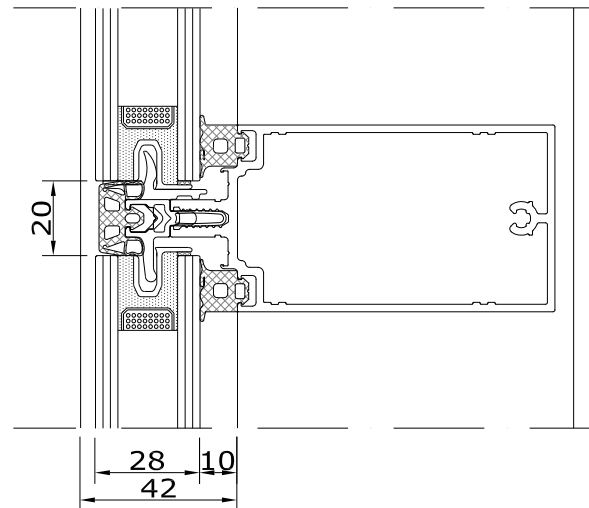
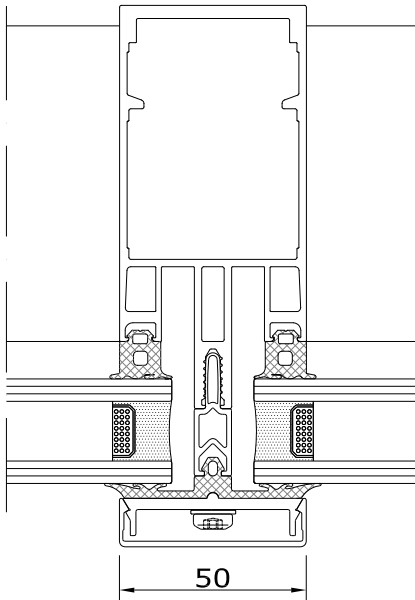
Copyright and ownership of this drawing is vested in EFT, Euro Facade Systems Ltd, whose prior written consent is required for its use, reproduction or for publication to any third party. All other rights reserved. Subject to modifications.



Two sided structural glazing with vertical cover cap (2sided SGV)

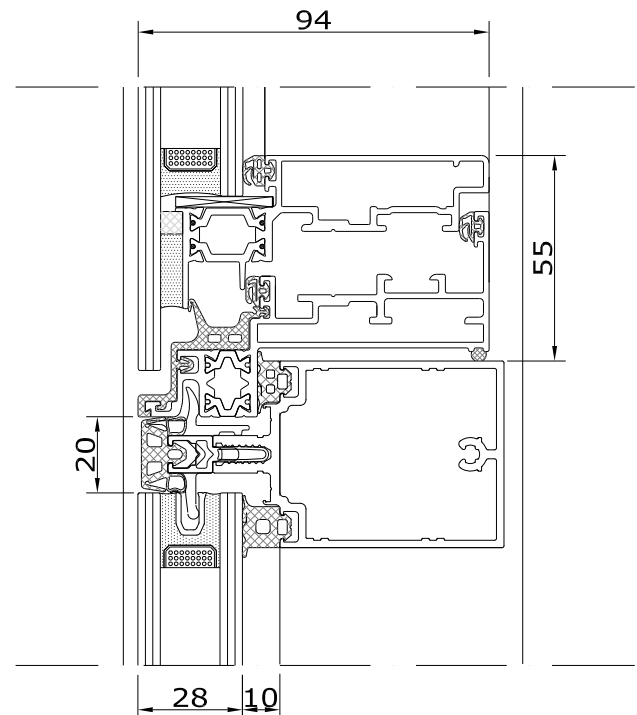
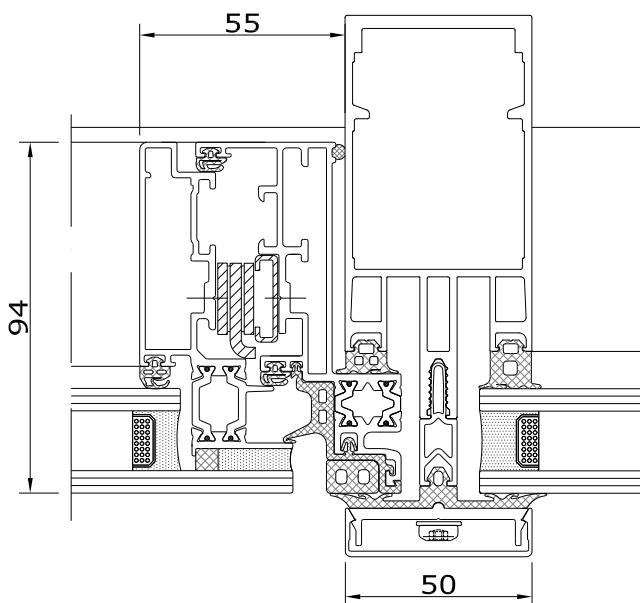
Comar 6EFT

Vertical cover cap / Horizontal EPDM gasket or silicone sealant.



2.46

Including Comar 6EFT Concealed Vent



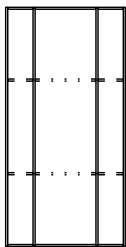
For concealed vent details, refer to section 8

Changes reserved
Sous reserve de modifications
Änderungen vorbehalten

Issue: 04
Date :01-14

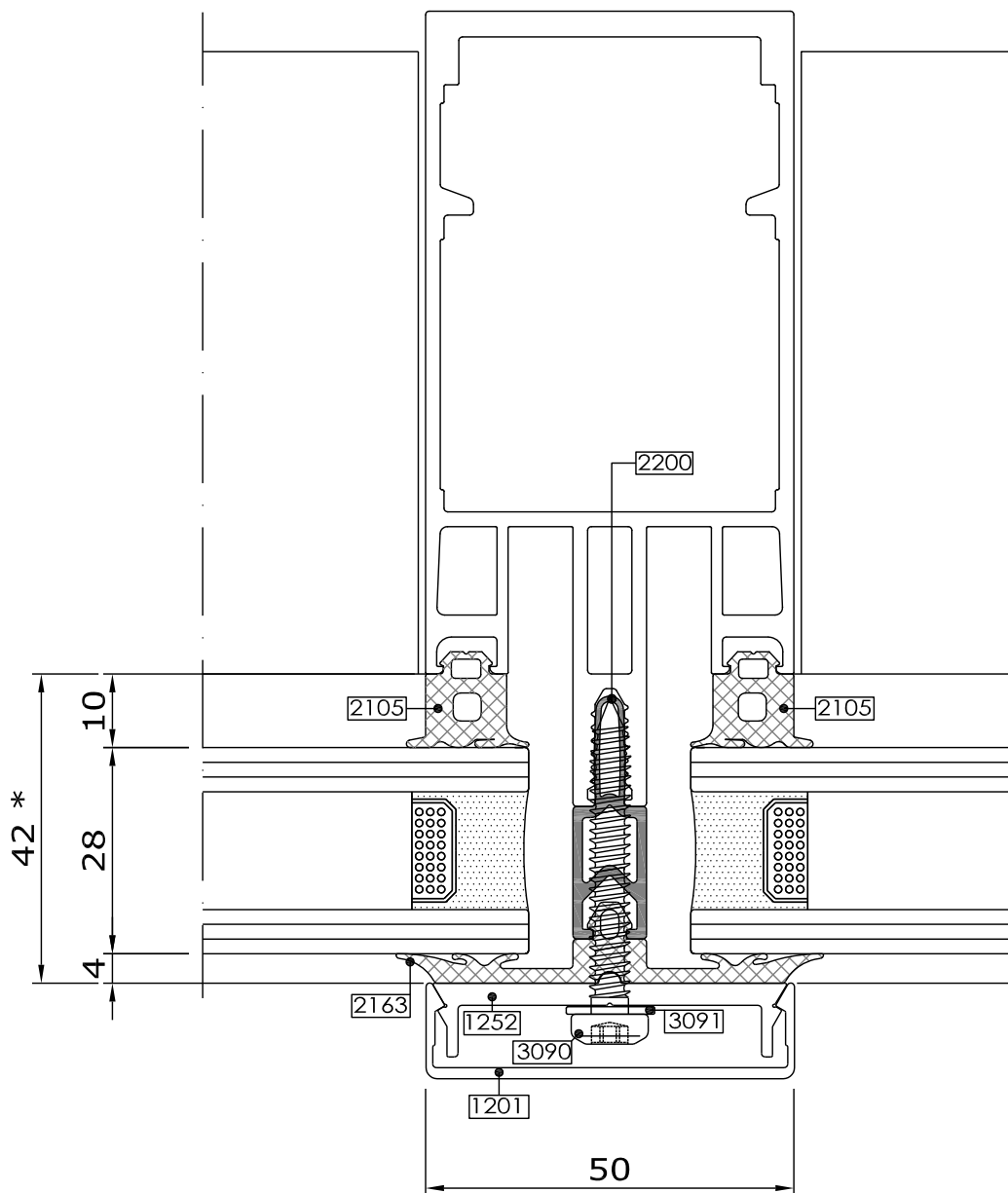
Comar 6EFT

Mullion detail



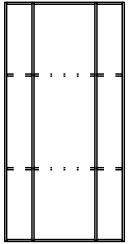
2.47

Fabricators Guide

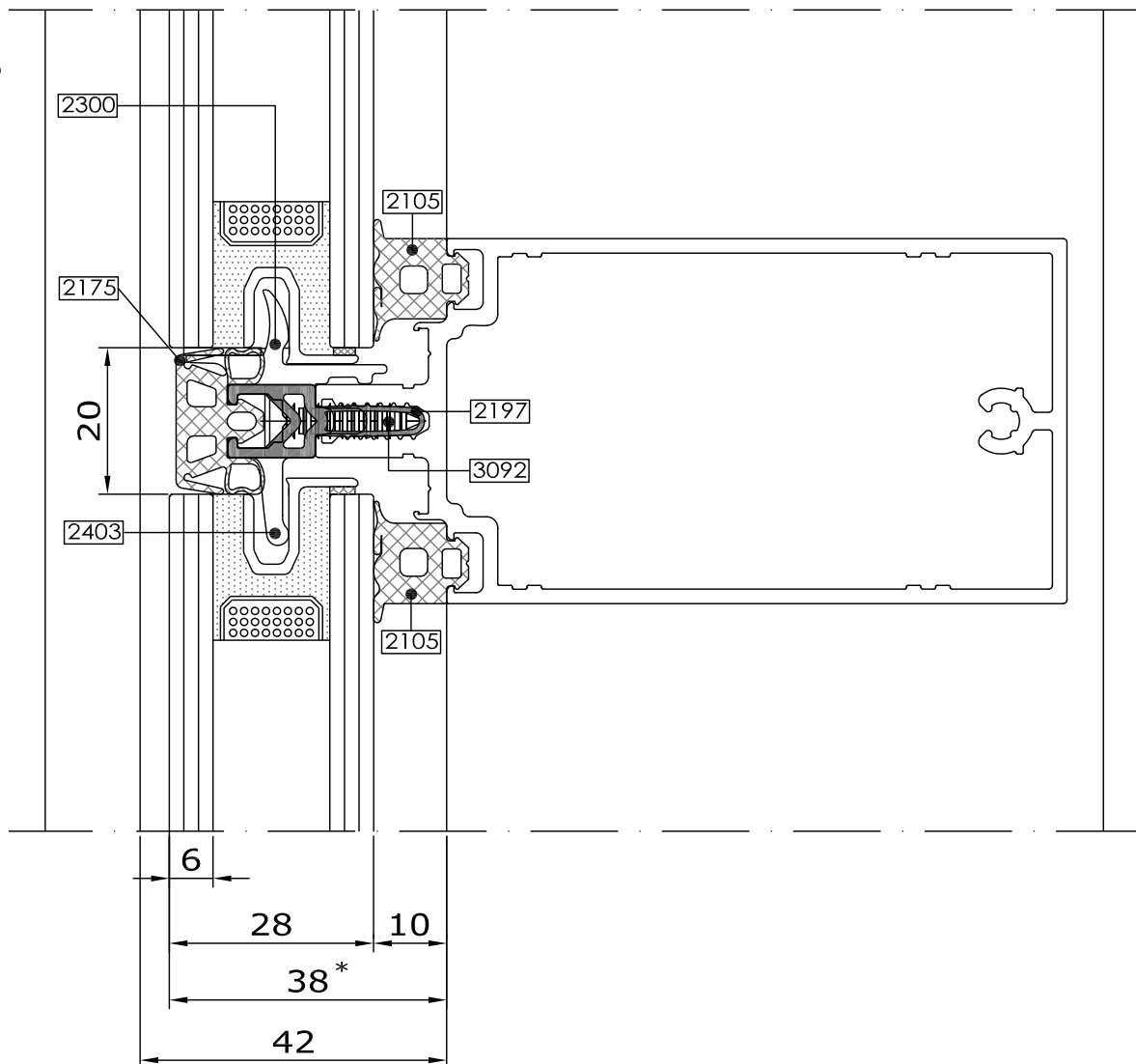


* Refer to Glazing Chart for glazing options

Transom detail Gasket seal



2.48



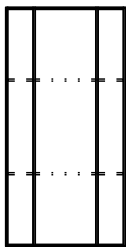
* Refer to Glazing Chart for glazing options

Typical details

2

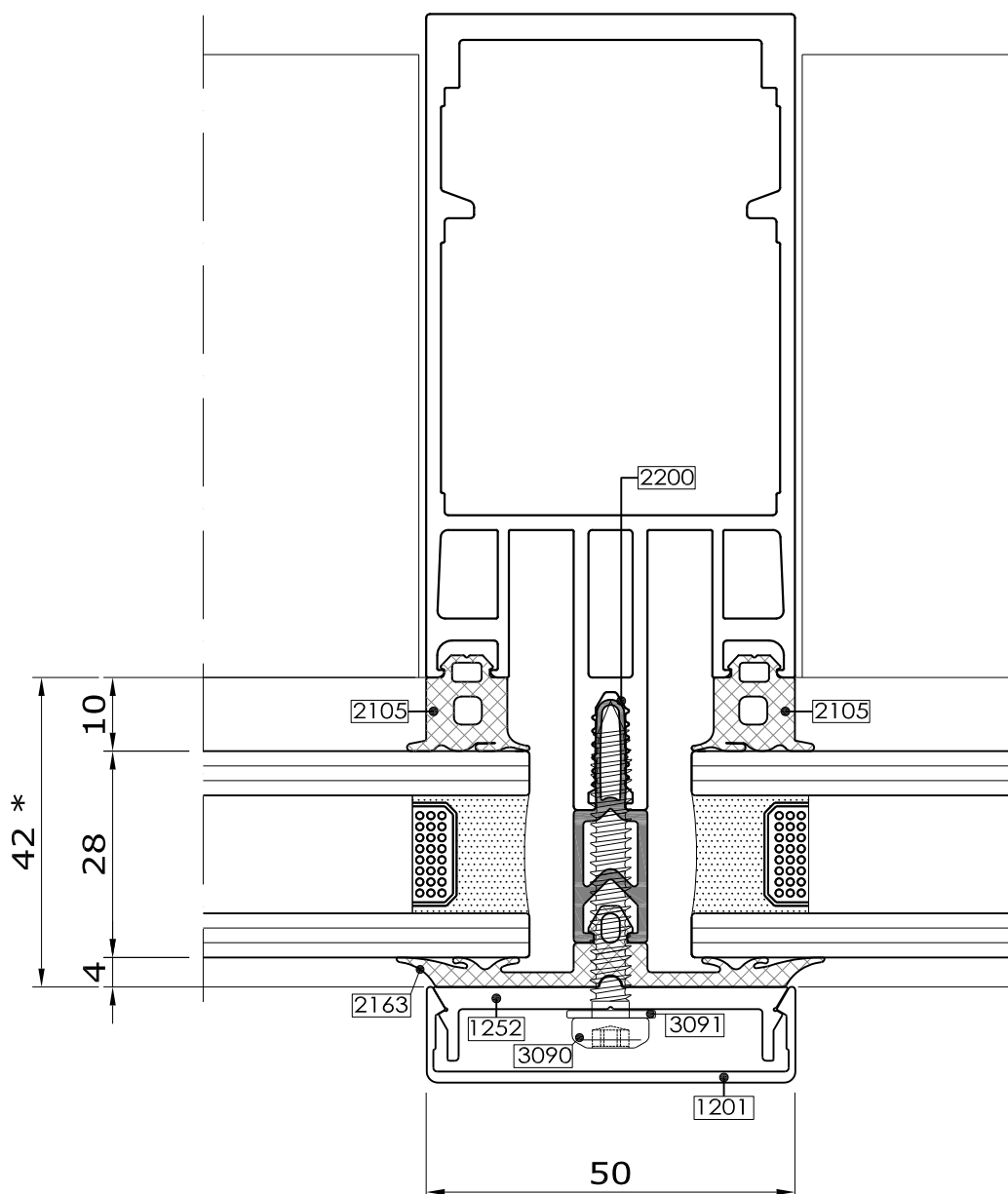
Comar 6EFT

Mullion detail



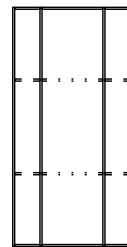
2.49

Fabricators Guide



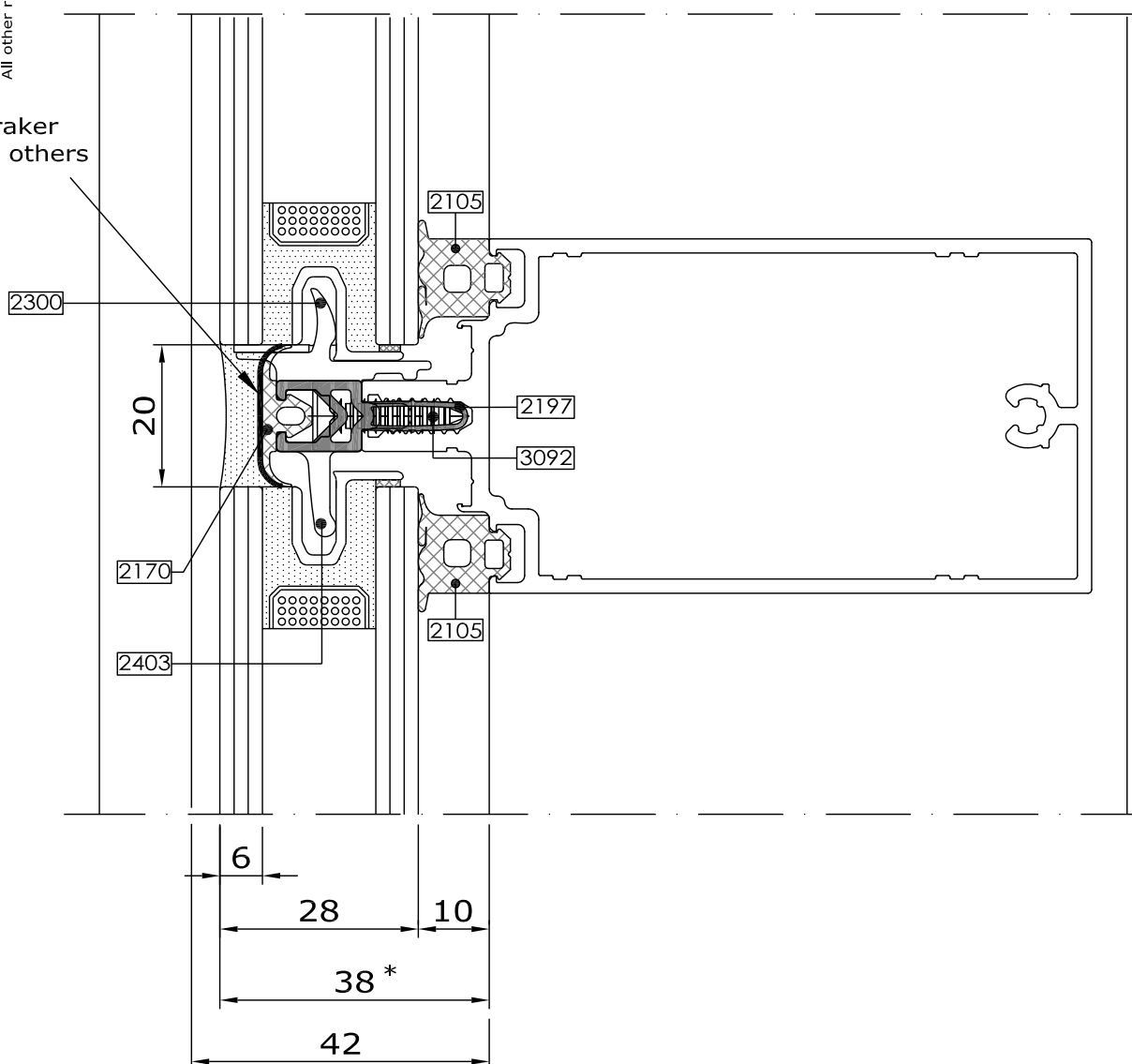
* Refer to Glazing Chart for glazing options

Transom detail Silicone seal



2.50

Bond braker
tape by others



* Refer to Glazing Chart for glazing options



comar
ARCHITECTURAL ALUMINIUM SYSTEMS

Changes reserved
Sous réserve de modifications
Änderungen vorbehalten

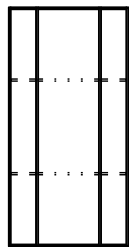
Issue: 04
Date :01-14

Typical details

2

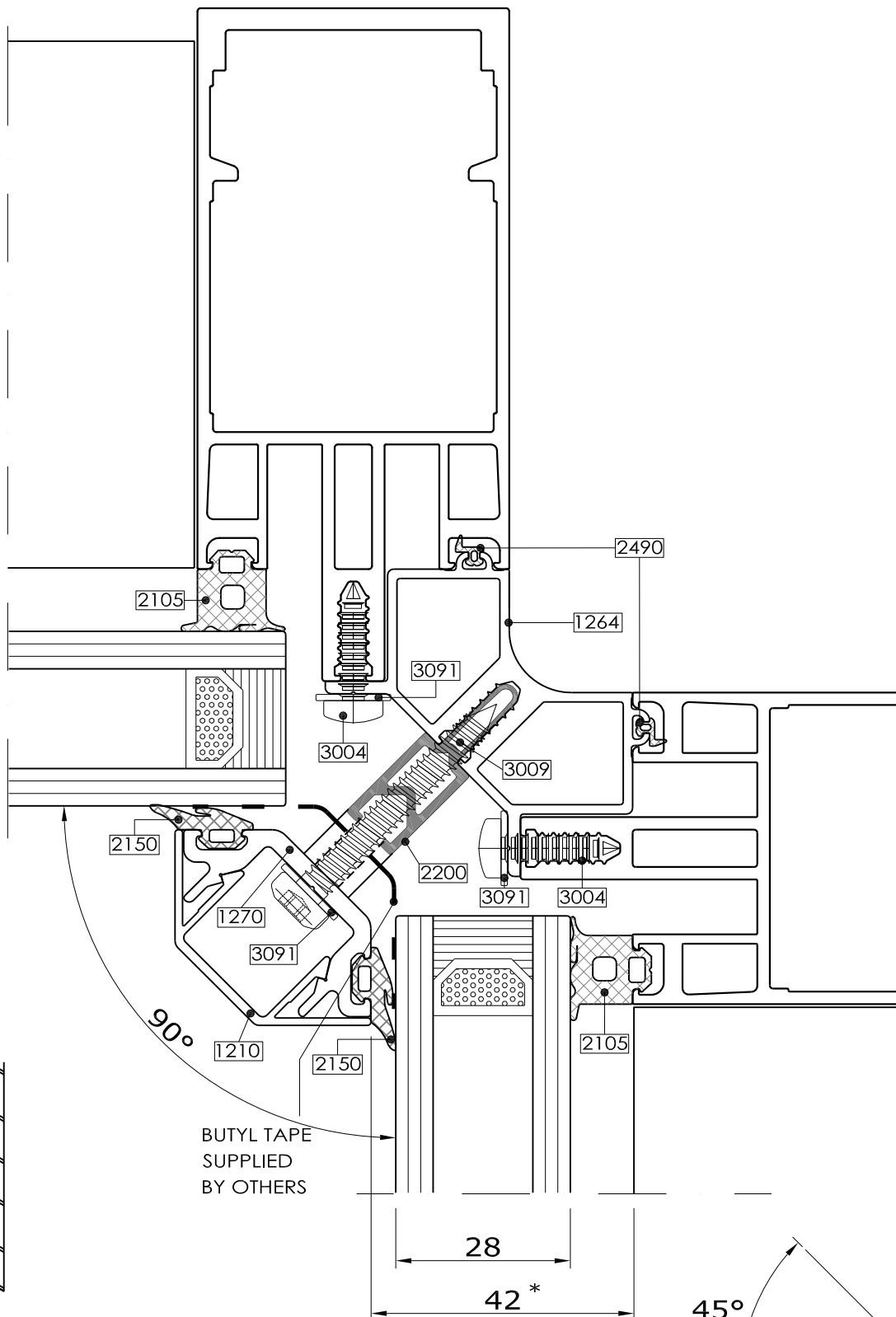
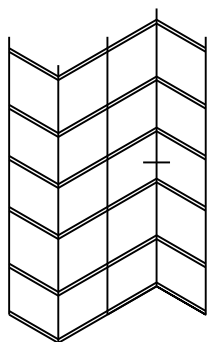
Comar 6EFT

Mullion corner post



2.51

Fabricators Guide



* Refer to Glazing Chart for glazing options

Changes reserved
Sous reserve de modifications
Änderungen vorbehalten



comar

ARCHITECTURAL ALUMINIUM SYSTEMS

Issue: 04
Date : 01-14

Copyright and ownership of this drawing is vested in EFT, Euro Facade Systems Ltd, whose prior written consent is required for its use, reproduction or for publication to any third party. All other rights reserved. Subject to modifications.

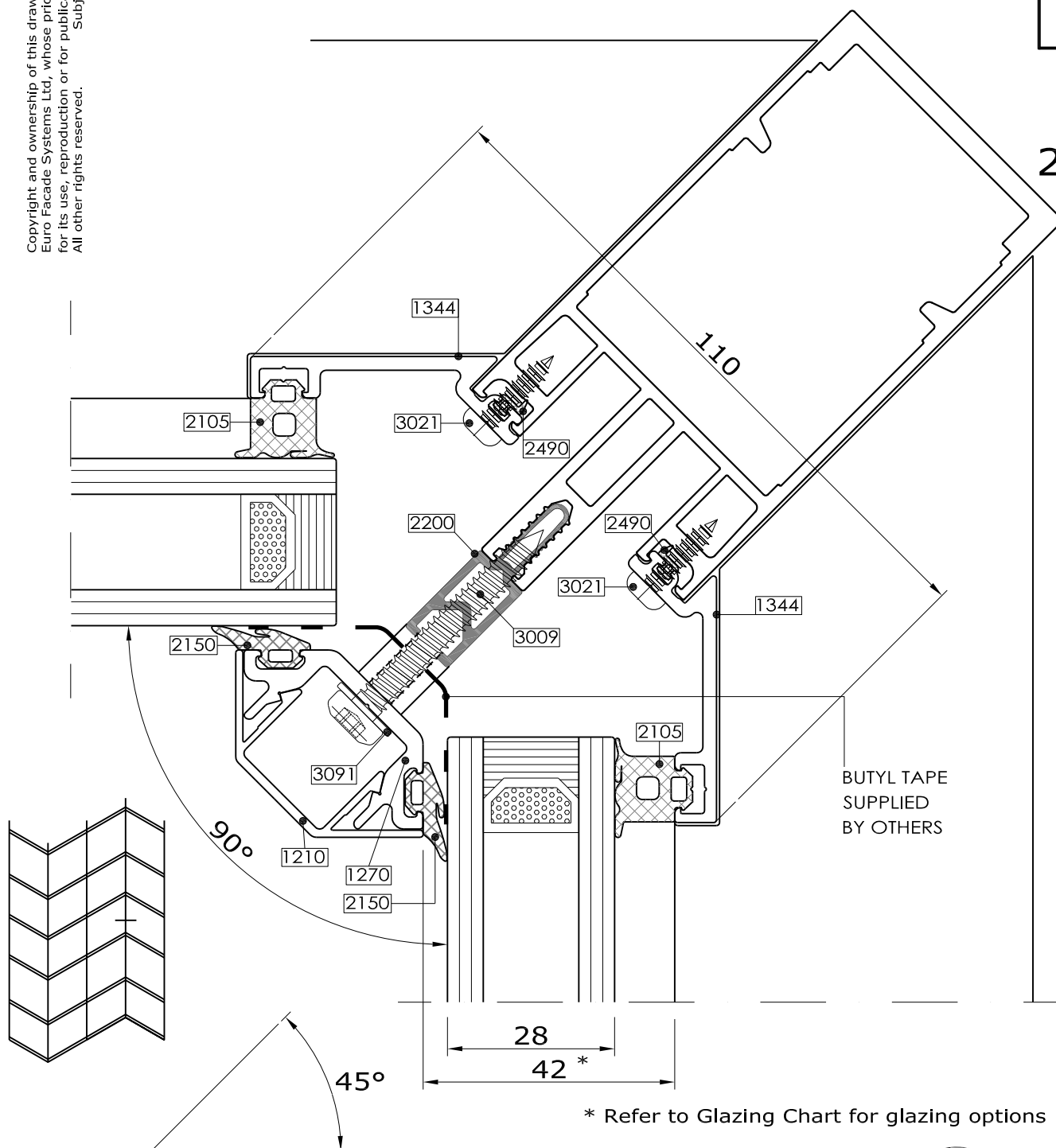
45° mullion corner post

Comar 6EFT



2.52

Fabricators Guide



* Refer to Glazing Chart for glazing options

Changes reserved
 Sous réserve de modifications
 Änderungen vorbehalten

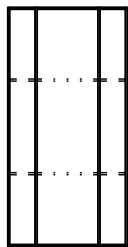
Issue: 04
 Date :01-14

Typical details

2

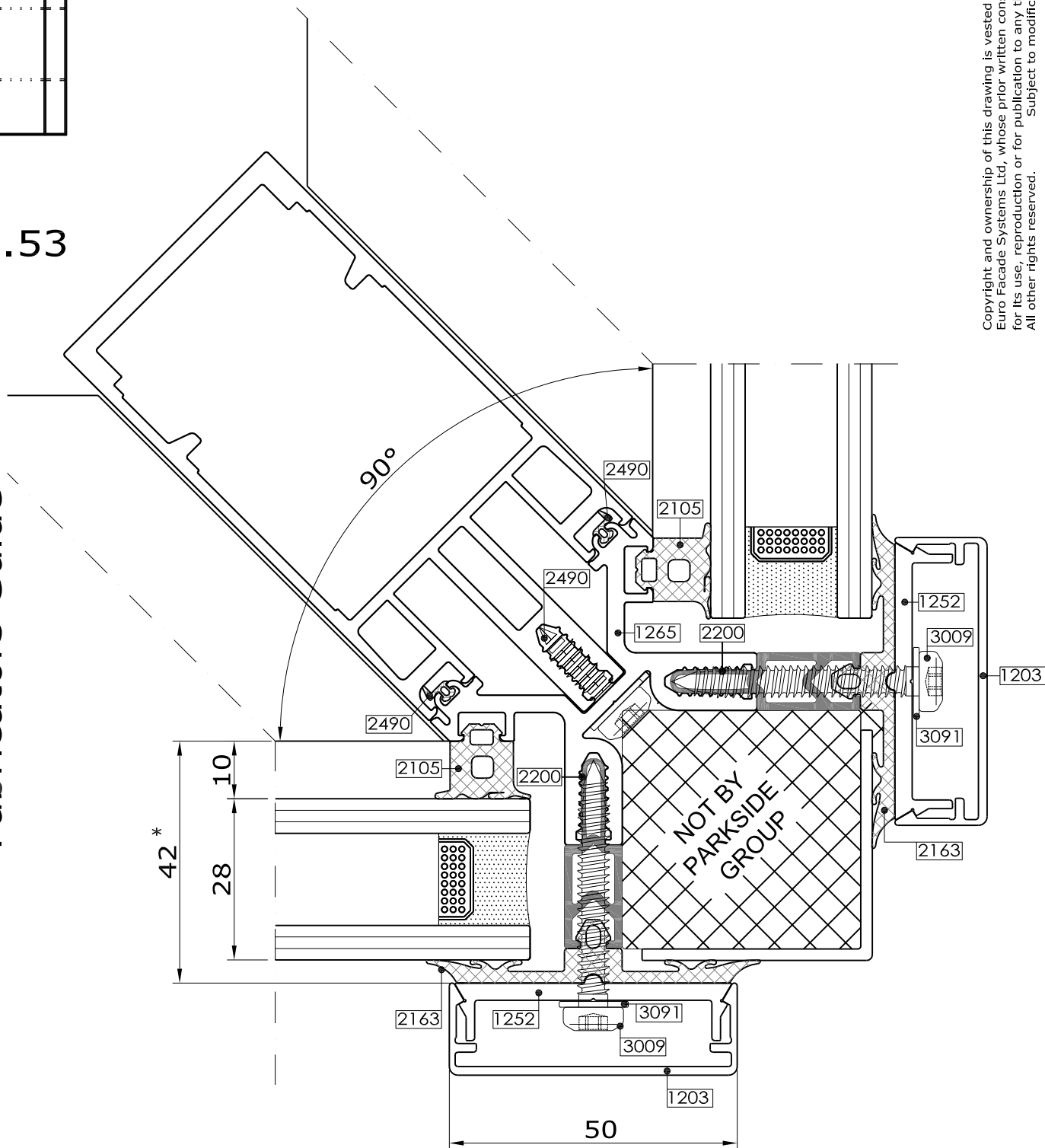
Comar 6EFT

Mullion detail
45 degree corner



2.53

Fabricators Guide



* Refer to Glazing Chart for glazing options

Changes reserved
Sous reserve de modifications
Änderungen vorbehalten

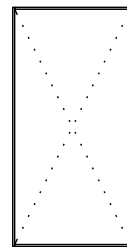
Copyright and ownership of this drawing is vested in EFT,
Euro Facade Systems Ltd, whose prior written consent is required
for its use, reproduction or for publication to any third party.
All other rights reserved. Subject to modifications.

2

Typical details

Future Additions

Comar 6EFT



2.54

FUTURE
ADDITION

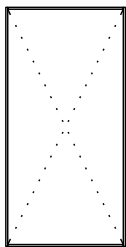
Fabricators Guide

Changes reserved
Sous reserve de modifications
Änderungen vorbehalten

Issue: 04
Date : 09-14

Comar 6EFT

Future Additions



2.55

Profiles Identification

FUTURE
ADDITION