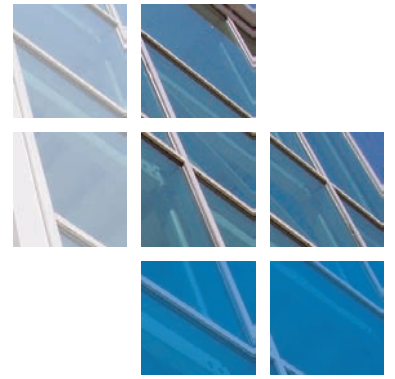




comar

ARCHITECTURAL ALUMINIUM SYSTEMS



St. John Plessington Catholic College.



Comar Architectural Aluminium Systems with their approved fabricator Elfab Aluminium Ltd, supplied Comar 5P.i windows, Comar 6 curtain walling and Comar 7 doors for a new build college. Due to the smooth installation and limited disruption to the college, Elfab Aluminium Ltd also acquired additional works on the project based in the Wirral.

Comar 5P.i. are thermally efficient polyamide insulated aluminium windows which offer outstanding weather performance and low U-values. Comar 5P.i is a 60mm window system that reduces heat loss through the trademark P.i thermal break ensuring low U-values so energy bills are minimised. The windows installed at the college were composites of top hungs on folding openers, a fan light above and a fixed light below. All opening vents were restricted to 150mm. Comar 5P.i is available in a variety of configurations and can be manufactured into casement, tilt and turn, pivot, top swing and sliding windows.

Comar 6 curtain walling is a versatile thermally efficient system designed to integrate panels and glass of different widths, opening vents and doors. The design of Comar 6 makes it ideal for complex faceted curtain walls as well as sheer glazed facades. Comar 6 offers a slim 50mm sight line with a multitude of transoms and mullions to cater for all deflection loads and configurations. In a busy educational environment Comar 7 commercial door sets are a natural choice. Not only are they available in swing, pivot, sliding, auto-sliding and sliding folding, they have been designed specifically for commercial applications where high traffic solutions are required. Comar 7 doors were fitted with anti-finger trap stiles, Axim soft touch panic exit device and concealed transom closers.

All the windows, curtain wall and doors were finished in a polyester powder coat in RAL 7024 matt dark grey. Elfab Aluminium Limited liaised closely with the specifiers to provide design advice and detailing which ensured the project ran smoothly and met site and budget deadlines.

PROJECT DETAILS

Architects
Davis Langdon.

Fabricator
Elfab Aluminium Ltd.

Main Contractor
J. Greenwoods Ltd.

Project Value
£68,177

System Used
Comar 5P.i, 6, 7

Location
Bebington, Wirral.



St. John Plessington College.

The Parkside Group incorporates Comar Architectural Aluminium Systems, Alu-Timber, an aluminium/timber composite system of windows, doors and framing, Axim Architectural Hardware and Duco ventilation and sun control.

This provides a unique opportunity for specifiers and fabricators to rely on a single source for building envelope and integrated systems.

Comar
Comar Architectural Aluminium Systems is the largest British, privately owned aluminium systems company in Europe. Comar designs, extrudes and distributes over 700 integrated profiles to a nationwide approved fabricator network for use in aluminium ground floor treatment, window, door and curtain walling applications. Comar has built its reputation on delivery; over £5M of mill, white polyester powder coating, silver, bronze and anodised profiles are kept in stock. This means that 99% of orders are fulfilled by our customers' weekly delivery.

Alu-Timber - Merging Material Solutions. Creating sustainable, energy efficient buildings is a cornerstone of design.



Alu-Timber, a range of aluminium/timber windows, doors and framing, that combines sustainably grown FSC or PEFC timbers with 100% recyclable aluminium. Alu-Timber gives the specifier benefits: low U-values to achieve current legislation as well as reassurance for the client that the facade will last, with minimal maintenance.

Comar Duco
Comar-Duco produce market leading ventilation and sun control products that continually evolve to meet the latest demands that building regulations command. This comprehensive solution to provide single source aluminium facades, with ventilation and solar shading, incorporates Window Ventilation, including acoustic ventilation, Architectural Louvres, Continuous Louvre Walls and Solar Shading.

Axim
As part of the The Parkside Group, Axim supply a full range of architectural aluminium door hardware including: concealed transom closers, floor springs, surface mounted closers, flush bolts, panic exit devices, handles, letter plates and other ancillary items.

RIBA CPD Provider
The Parkside Group provides RIBA assessed CPD seminars to architects and specifiers throughout the UK. Please contact us for further details.

Nationwide Architectural Specification Team
Comar Architectural Aluminium Systems have a nationwide team of architectural advisors who specialise in providing architects and specifiers with project support and NBS specifications. Fabricators and installers are supported by a team of Territory Managers.



GROUND FLOOR TREATMENT	
COMAR 1	Single Glazed GFT
COMAR 3	Double Glazed GFT
COMAR 4	Single Glazed GFT
COMAR 8	Fin/Bead GFT
CURTAIN WALLING	
COMAR 6	Curtain Walling, Stick Build & Ladder Frame, Square Cut & Step Cut.
COMAR 6	EFT Structural Glazing 2 & 4 sided
DOORS	
COMAR 7	Doors, Folding, Sliding, Swing & Polyamide Rebated.
WINDOWS	
COMAR 5	Windows, 45mm, 50mm, 55mm, 60mm & 75mm Polyamide.
WINDOW WALLING	
COMAR 2	Feature Wall T.B. Window Walling, Thermally Broken.
COMAR 9	High Performance Window, Doors & Framing

The Parkside Group Ltd.,
Unit 5, The Willow Centre,
17 Willow Lane, Mitcham, Surrey,
CR4 4NX.

Tel: 0208 685 9685
Fax: 0208 685 9696
Email: projects@parksidegroup.co.uk
www.parksidegroup.co.uk

