

Meridian Point, Southend on Sea.



Meridian Point is a new prestigious residential and retail development in the heart of Southend-On-Sea. The £8M project was architecturally demanding and access to the site was challenging due to its built-up location. The entire building is an ensemble of six blocks, each varying in height, shape and purpose, bringing colourful animation to the street frontage. The wall fabric displays a tightly controlled pallet of materials: brick-work for the five and three storey corner blocks, brick coloured wood panel cladding façade for the two central blocks and two four-storey high glass screens

Here it would be difficult to overstate the importance of fenestration: the south-facing windows promise sea views and the design of the entire external envelope allows the maximum amount of natural daylight inside the building. The fabricators worked closely with the architects from the early design stages and advised on the glazing systems required.

To meet the architect's design concept complementary grey polyester powder coated aluminium framing was specified. The entire building was furnished with Comar 5 tilt & turn windows. Comar 5 was installed direct into brick wall and wood cladding reveals.

The eventual cost of the glazing was kept down to a minimum by specifying the cost-effective Comar 2 window walling system. Comar 2 was used for the retail units on the ground floor and for the two elegant three floors spanning glazed façades for the galleried apartments. The versatility of Comar 2 includes 3-way glazing profiles and corner mullions that are adjustable from 90° to 135° and was used in this project to achieve the corner glazing on the five storey block.

The impact of construction on the neighbouring businesses and homes was kept to a minimum by installing factory fabricated aluminium systems.

PROJECT DETAILS

Fabricator:
Design & Creation Ltd

Contractor:
Hollybrook

Project Value:
£8M

Systems Used:
Comar 2, 5 and 7

Location:
Southchurch Road,
Southend-On-Sea



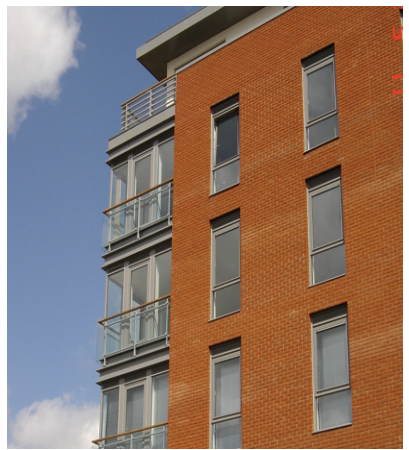
Meridian Point Apartments, Southend.

The Parkside Group incorporates Comar Architectural Aluminium Systems, Alu-Timber, an aluminium/timber composite system of windows, doors and framing, Axim Architectural Hardware and Duco ventilation and sun control.

This provides a unique opportunity for specifiers and fabricators to rely on a single source for building envelope and integrated systems.

Comar
Comar Architectural Aluminium Systems is the largest British, privately owned aluminium systems company in Europe. Comar designs, extrudes and distributes over 700 integrated profiles to a nationwide approved fabricator network for use in aluminium ground floor treatment, window, door and curtain walling applications. Comar has built its reputation on delivery; over £5M of mill, white polyester powder coating, silver, bronze and anodised profiles are kept in stock. This means that 99% of orders are fulfilled by our customers' weekly delivery.

Alu-Timber - Merging Material Solutions. Creating sustainable, energy efficient buildings is a cornerstone of design.



Alu-Timber, a range of aluminium/timber windows, doors and framing, that combines sustainably grown FSC or PEFC timbers with 100% recyclable aluminium. Alu-Timber gives the specifier benefits: low U-values to achieve current legislation as well as reassurance for the client that the facade will last, with minimal maintenance.

Comar Duco
Comar-Duco produce market leading ventilation and sun control products that continually evolve to meet the latest demands that building regulations command. This comprehensive solution to provide single source aluminium facades, with ventilation and solar shading, incorporates Window Ventilation, including acoustic ventilation, Architectural Louvres, Continuous Louvre Walls and Solar Shading.

Axim
As part of the The Parkside Group, Axim supply a full range of architectural aluminium door hardware including: concealed transom closers, floor springs, surface mounted closers, flush bolts, panic exit devices, handles, letter plates and other ancillary items.

RIBA CPD Provider
The Parkside Group provides RIBA assessed CPD seminars to architects and specifiers throughout the UK. Please contact us for further details.

Nationwide Architectural Specification Team
Comar Architectural Aluminium Systems have a nationwide team of architectural advisors who specialise in providing architects and specifiers with project support and NBS specifications. Fabricators and installers are supported by a team of Territory Managers.



| GROUND FLOOR TREATMENT | |
|------------------------|---|
| COMAR 1 | Single Glazed GFT |
| COMAR 3 | Double Glazed GFT |
| COMAR 4 | Single Glazed GFT |
| COMAR 8 | Fin/Bead GFT |
| CURTAIN WALLING | |
| COMAR 6 | Curtain Walling, Stick Build & Ladder Frame, Square Cut & Step Cut. |
| COMAR 6 | EFT Structural Glazing 2 & 4 sided |
| DOORS | |
| COMAR 7 | Doors, Folding, Sliding, Swing & Polyamide Rebated. |
| WINDOWS | |
| COMAR 5 | Windows, 45mm, 50mm, 55mm, 60mm & 75mm Polyamide. |
| WINDOW WALLING | |
| COMAR 2 | Feature Wall T.B. Window Walling, Thermally Broken. |
| COMAR 9 | High Performance Window, Doors & Framing |

The Parkside Group Ltd.,
Unit 5, The Willow Centre,
17 Willow Lane, Mitcham,
CR4 4NX.

Tel: 0208 685 9685
Fax: 0208 685 9696
Email: projects@parksidegroup.co.uk
www.parksidegroup.co.uk

