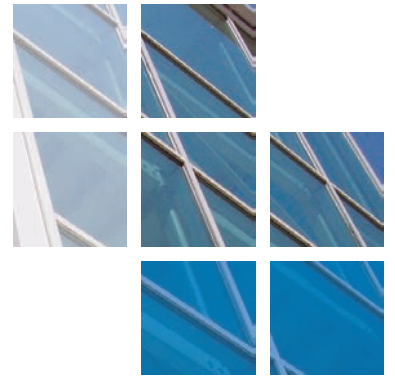




comar

ARCHITECTURAL ALUMINIUM SYSTEMS



University of Bedford, Liberty Park.



Comar Architectural Aluminium Systems, with their approved fabricator Alumet Systems (UK) Ltd, supplied the Comar 5P.i 60mm casement window system for student accommodation at Liberty Park, University of Bedfordshire. This large scale modern and contemporary project forms part of the facilities at the University of Bedfordshire and the development is made up of numerous buildings which form a square shape with open landscaped garden space in its centre. Comar 5P.i windows were selected because they offer a cost effective and robust solution to high use applications such as student accommodation.

The external envelope for the newly built 3 & 4 storey development was fitted with the Comar 5P.i 60mm window that reduces heat loss through the trademark P.i thermal break ensuring low U-values so energy bills are minimised. Comar 5P.i has two separately extruded profiles which are then rolled together with a P.i. strip which forms the break, and offers a dual colour option if required. The windows at Liberty Park were top hung with outward opening vents and fitted with non-locking silver coated cockspur handles and friction hinges to restrict opening to 150mm. The window frames on the Liberty Park project were finished with polyester powder coat in a grey RAL. Comar 5P.i is available in a variety of configurations and can be manufactured into casement, tilt and turn and top swing fully reversible windows.

All Comar approved fabricators are required to have the technical expertise to attend pre-site meetings and provide detailing. Alumet liaised closely with the specifier to provide design advice and detailing which ensured the project ran smoothly and met site deadlines.

PROJECT DETAILS

Architects
O'Connell East Architects

Fabricator
Alumet Systems (UK) Ltd

Main Contractor
Marriott Construction

Project Value
£1,419,000

System Used
Comar 5P.i – 60mm

Location
Bedford



University of Bedford, Liberty Park.

The Parkside Group incorporates Comar Architectural Aluminium Systems, Alu-Timber, an aluminium/timber composite system of windows, doors and framing, Axim Architectural Hardware and Duco ventilation and sun control.

This provides a unique opportunity for specifiers and fabricators to rely on a single source for building envelope and integrated systems.

Comar
Comar Architectural Aluminium Systems is the largest British, privately owned aluminium systems company in Europe. Comar designs, extrudes and distributes over 700 integrated profiles to a nationwide approved fabricator network for use in aluminium ground floor treatment, window, door and curtain walling applications. Comar has built its reputation on delivery; over £5M of mill, white polyester powder coating, silver, bronze and anodised profiles are kept in stock. This means that 99% of orders are fulfilled by our customers' weekly delivery.

Alu-Timber - Merging Material Solutions. Creating sustainable, energy efficient buildings is a cornerstone of design.



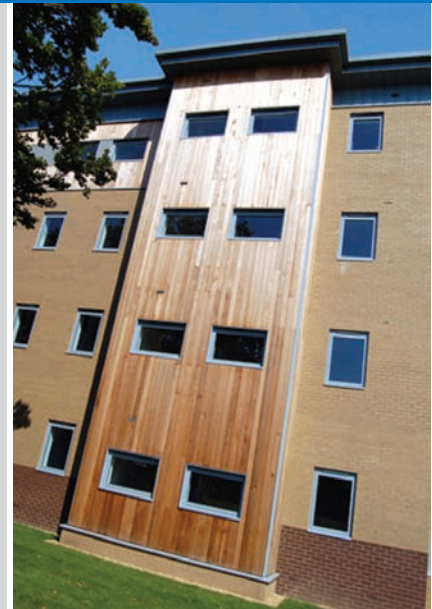
Alu-Timber, a range of aluminium/timber windows, doors and framing, that combines sustainably grown FSC or PEFC timbers with 100% recyclable aluminium. Alu-Timber gives the specifier benefits: low U-values to achieve current legislation as well as reassurance for the client that the facade will last, with minimal maintenance.

Comar Duco
Comar-Duco produce market leading ventilation and sun control products that continually evolve to meet the latest demands that building regulations command. This comprehensive solution to provide single source aluminium facades, with ventilation and solar shading, incorporates Window Ventilation, including acoustic ventilation, Architectural Louvres, Continuous Louvre Walls and Solar Shading.

Axim
As part of the The Parkside Group, Axim supply a full range of architectural aluminium door hardware including: concealed transom closers, floor springs, surface mounted closers, flush bolts, panic exit devices, handles, letter plates and other ancillary items.

RIBA CPD Provider
The Parkside Group provides RIBA assessed CPD seminars to architects and specifiers throughout the UK. Please contact us for further details.

Nationwide Architectural Specification Team
Comar Architectural Aluminium Systems have a nationwide team of architectural advisors who specialise in providing architects and specifiers with project support and NBS specifications. Fabricators and installers are supported by a team of Territory Managers.



GROUND FLOOR TREATMENT	
COMAR 1	Single Glazed GFT
COMAR 3	Double Glazed GFT
COMAR 4	Single Glazed GFT
COMAR 8	Fin/Bead GFT
CURTAIN WALLING	
COMAR 6	Curtain Walling, Stick Build & Ladder Frame, Square Cut & Step Cut.
COMAR 6	EFT Structural Glazing 2 & 4 sided
DOORS	
COMAR 7	Doors, Folding, Sliding, Swing & Polyamide Rebated.
WINDOWS	
COMAR 5	Windows, 45mm, 50mm, 55mm, 60mm & 75mm Polyamide.
WINDOW WALLING	
COMAR 2	Feature Wall T.B. Window Walling, Thermally Broken.
COMAR 9	High Performance Window, Doors & Framing

The Parkside Group Ltd.,
Unit 5, The Willow Centre,
17 Willow Lane, Mitcham, Surrey,
CR4 4NX.

Tel: 0208 685 9685
Fax: 0208 685 9696
Email: projects@parksidegroup.co.uk
www.parksidegroup.co.uk

