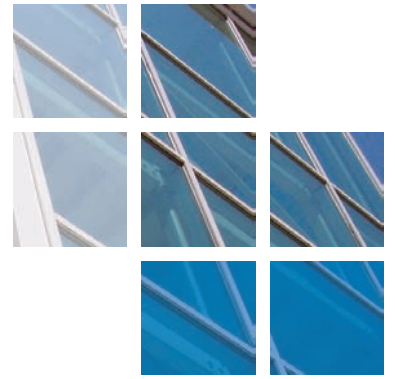




# comar

ARCHITECTURAL ALUMINIUM SYSTEMS



## Collingwood College, Camberley, Surrey.



Comar Architectural Aluminium Systems and their approved fabricator Alimatic Ltd., have recently completed a full refurbishment project to provide a whole new building envelope to Collingwood College, Camberley, Surrey. The design brief was for the façade to be modern, clean and contemporary whilst complementing the school colour. The College and the Local Authority are extremely happy with the end result and are now planning the refurbishment of an adjacent school. Intensive consultations took place as the brief for this project required Alimatic to specially design many elements, including the corner panels to ensure the smooth installation.

For the sleek modern façade, Comar 6 curtain walling was specified. Comar 6 curtain walling is a versatile thermally efficient system designed to integrate panels and glass of different widths into the façade with special profiles to include opening vents and doors. The design of Comar 6 makes it ideal for complex faceted curtain walls as well as sheer glazed façades. Comar 6 offers a slim 50mm sight line with a multitude of transoms and mullions to cater for all deflection loads and grid centres.

For the opening vents, Comar 5P.I. thermally efficient polyamide insulated aluminium windows were installed offering outstanding weather performance and low U-values. Comar 5P.I. is a 60mm window system that reduces heat loss through the trademark P.i thermal break ensuring low U-values, so energy bills are minimised. Comar 5P.I. is available in a variety of configurations and can be manufactured into casement, tilt and turn, pivot, top swing and sliding windows. The windows installed at the College were top hung/fixing light composites.

In a busy educational environment, Comar 7 commercial door sets are a natural choice. Not only are they available in swing, pivot, sliding, auto-sliding and sliding folding, they have been designed specifically for educational applications where high traffic solutions are required. For safety, the Comar 7 swing doors were fitted with anti-finger trap stiles, Axim soft touch panic exit device and Axim concealed transom closers which were hung directly from the Comar 6 frame. All aluminium systems were finished in Hipca White RAL 9910 (semi gloss) polyester powder coat.

All Comar approved fabricators are required to have the technical expertise to attend pre-site meetings and provide detailing. Comar Architectural Advisors and Alimatic Ltd., liaised closely with the specifiers to provide design advice, which ensured the project conformed to planning requirements, ran smoothly and met site deadlines.

### PROJECT DETAILS

Architects  
Mouchel

Fabricator  
Alimatic Limited

Main Contractor  
Apollo Construction

Project Value  
£350,000

System Used  
Comar 5P.I, 6 & 7

Location  
Camberley, Surrey.



# Collingwood College, Camberley, Surrey.

The Parkside Group incorporates Comar Architectural Aluminium Systems, Alu-Timber, an aluminium/timber composite system of windows, doors and framing, Axim Architectural Hardware and Duco ventilation and sun control.

This provides a unique opportunity for specifiers and fabricators to rely on a single source for building envelope and integrated systems.

Comar Architectural Aluminium Systems is the largest British, privately owned aluminium systems company in Europe. Comar designs, extrudes and distributes over 700 integrated profiles to a nationwide approved fabricator network for use in aluminium ground floor treatment, window, door and curtain walling applications. Comar has built its reputation on delivery; over £5M of mill, white polyester powder coating, silver, bronze and anodised profiles are kept in stock. This means that 99% of orders are fulfilled by our customers' weekly delivery.

Alu-Timber - Merging Material Solutions. Creating sustainable, energy efficient buildings is a cornerstone of design.



Alu-Timber, a range of aluminium/timber windows, doors and framing, that combines sustainably grown FSC or PEFC timbers with 100% recyclable aluminium. Alu-Timber gives the specifier benefits: low U-values to achieve current legislation as well as reassurance for the client that the facade will last, with minimal maintenance.

Comar Duco produce market leading ventilation and sun control products that continually evolve to meet the latest demands that building regulations command. This comprehensive solution to provide single source aluminium facades, with ventilation and solar shading, incorporates Window Ventilation, including acoustic ventilation, Architectural Louvres, Continuous Louvre Walls and Solar Shading.

Axim As part of the The Parkside Group, Axim supply a full range of architectural aluminium door hardware including: concealed transom closers, floor springs, surface mounted closers, flush bolts, panic exit devices, handles, letter plates and other ancillary items.

RIBA CPD Provider The Parkside Group provides RIBA assessed CPD seminars to architects and specifiers throughout the UK. Please contact us for further details.

Nationwide Architectural Specification Team Comar Architectural Aluminium Systems have a nationwide team of architectural advisors who specialise in providing architects and specifiers with project support and NBS specifications. Fabricators and installers are supported by a team of Territory Managers.



GROUND FLOOR TREATMENT	
COMAR 1	Single Glazed GFT
COMAR 3	Double Glazed GFT
COMAR 4	Single Glazed GFT
COMAR 8	Fin/Bead GFT
CURTAIN WALLING	
COMAR 6	Curtain Walling, Stick Build & Ladder Frame, Square Cut & Step Cut.
COMAR 6	EFT Structural Glazing 2 & 4 sided
DOORS	
COMAR 7	Doors, Folding, Sliding, Swing & Polyamide Rebated.
WINDOWS	
COMAR 5	Windows, 45mm, 50mm, 55mm, 60mm & 75mm Polyamide.
WINDOW WALLING	
COMAR 2	Feature Wall T.B. Window Walling, Thermally Broken.
COMAR 9	High Performance Window, Doors & Framing

The Parkside Group Ltd., Unit 5, The Willow Centre, 17 Willow Lane, Mitcham, Surrey, CR4 4NX.

Tel: 0208 685 9685  
Fax: 0208 685 9696  
Email: [projects@parksidegroup.co.uk](mailto:projects@parksidegroup.co.uk)  
[www.parksidegroup.co.uk](http://www.parksidegroup.co.uk)

