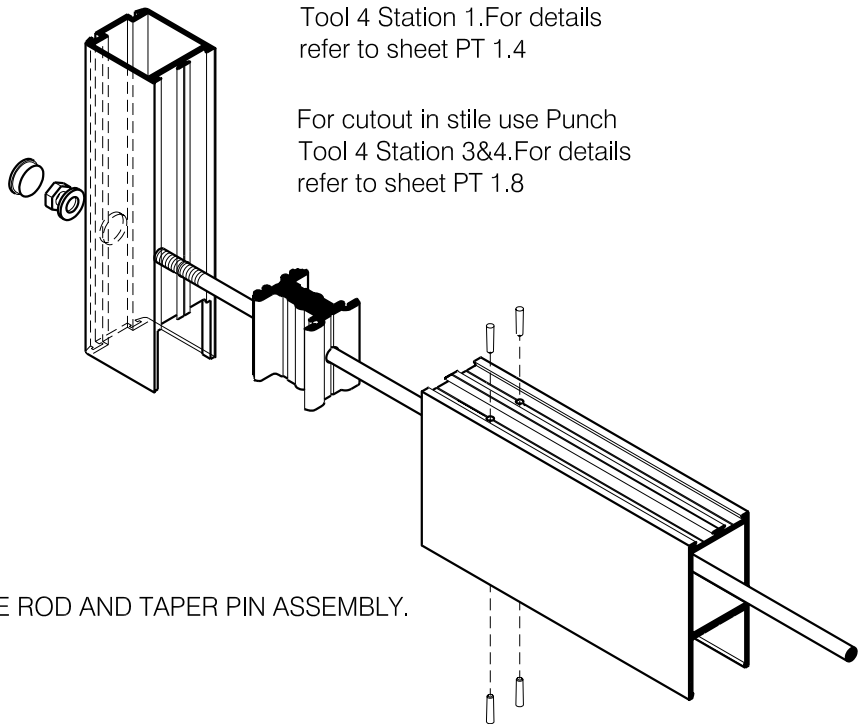


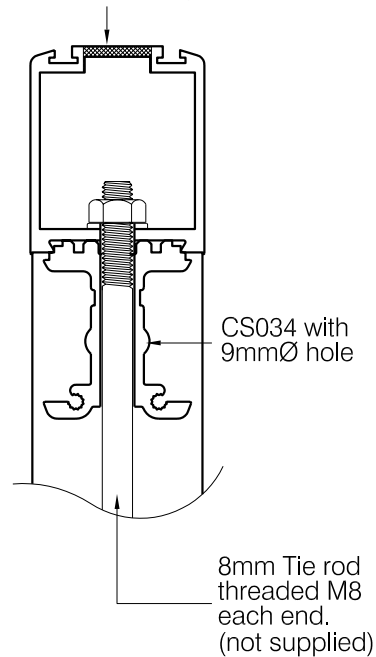
For hole in stile use Punch
Tool 4 Station 1. For details
refer to sheet PT 1.4

For cutout in stile use Punch
Tool 4 Station 3&4. For details
refer to sheet PT 1.8



TIE ROD AND TAPER PIN ASSEMBLY.

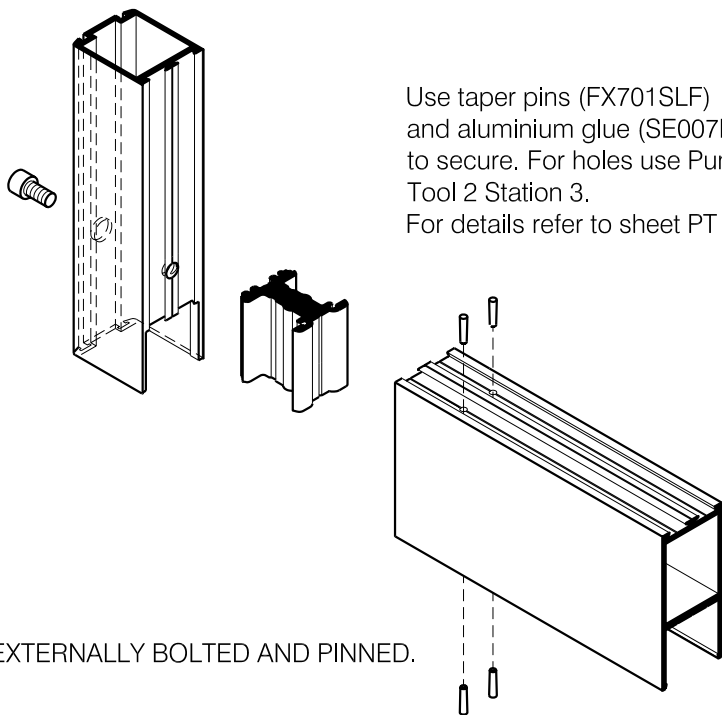
Access hole if required.



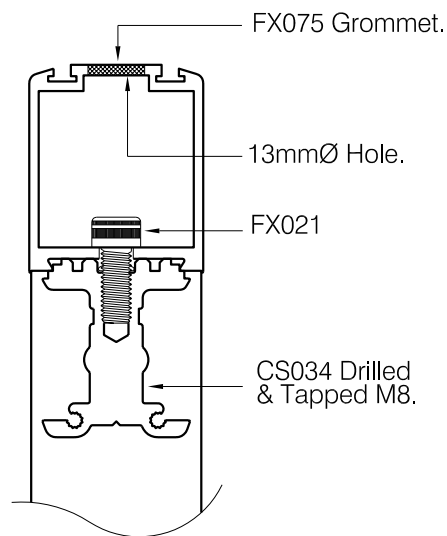
CS034 with
9mmØ hole

8mm Tie rod
threaded M8
each end.
(not supplied)

Use taper pins (FX701SLF)
and aluminium glue (SE007DBLK)
to secure. For holes use Punch
Tool 2 Station 3.
For details refer to sheet PT 1.7



EXTERNALLY BOLTED AND PINNED.



FX075 Grommet.

13mmØ Hole.

FX021

CS034 Drilled
& Tapped M8.