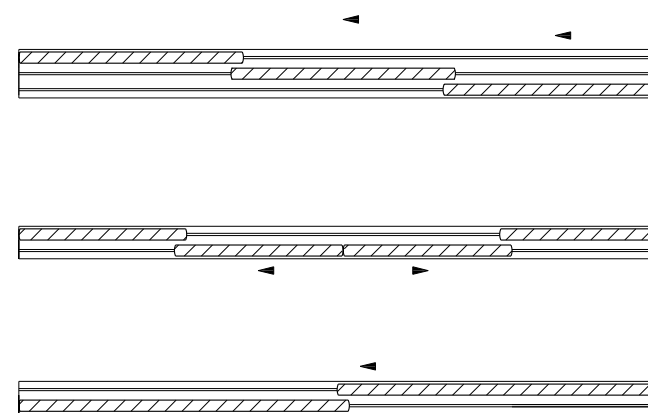
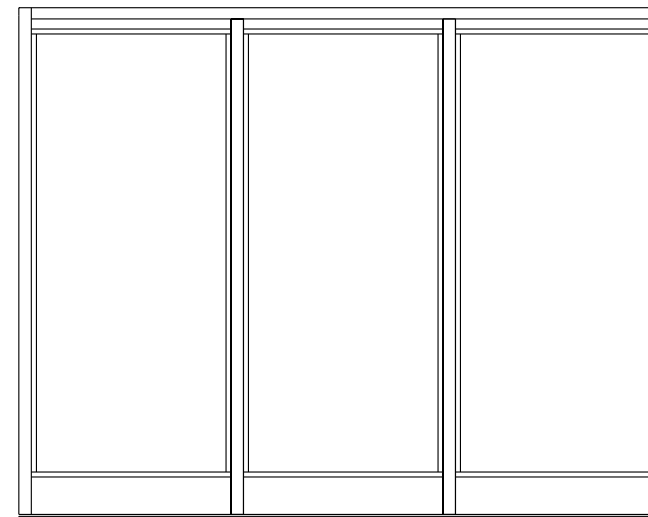
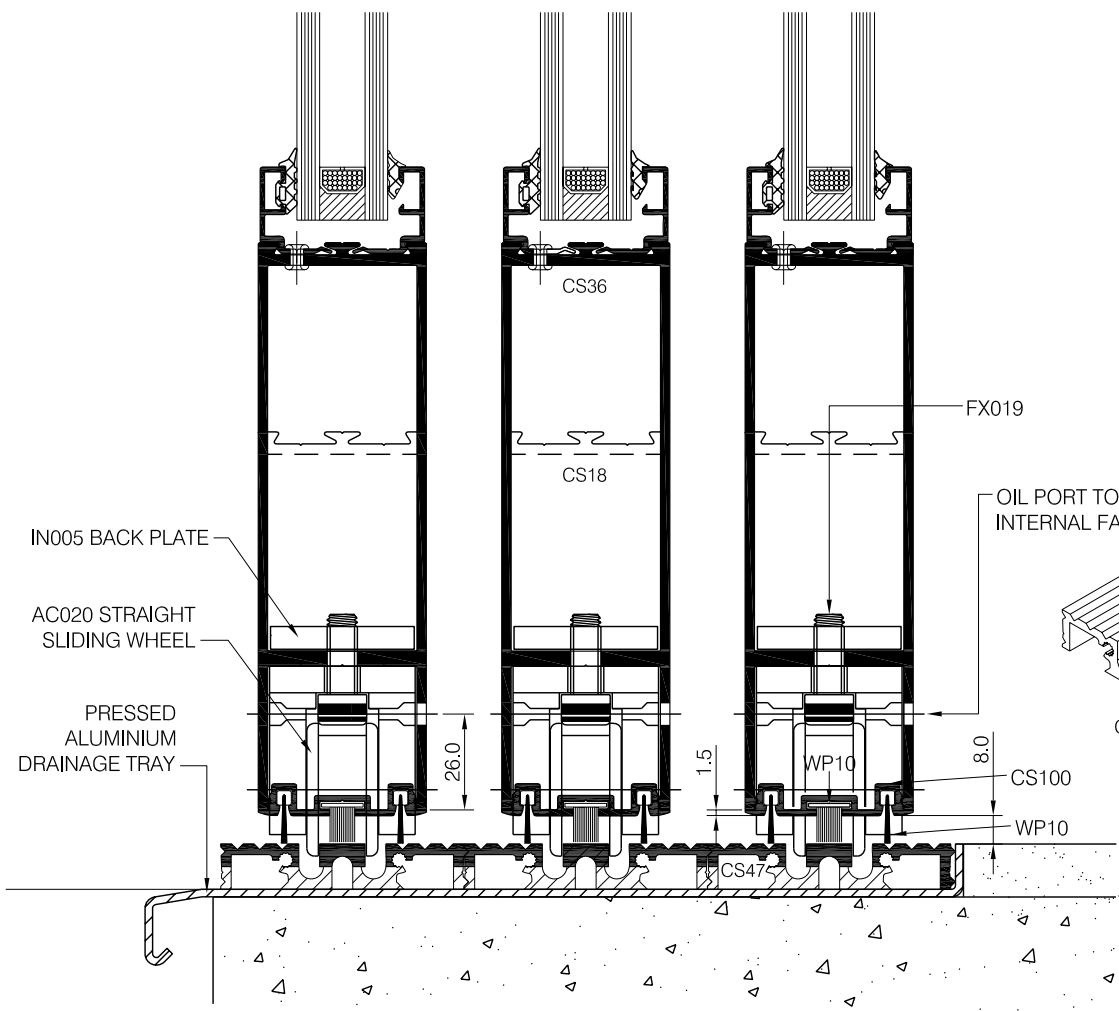
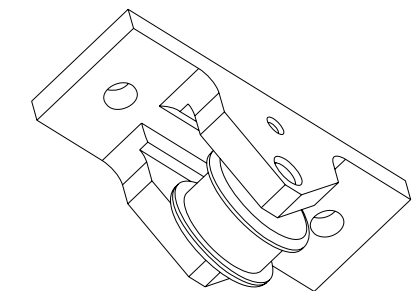


HD048 Flush pull inserted into door stile. 95mm x 32mm hole routed into door stile using 5mmØ router cutter to match corners of flush pull. flush pulls are secured using M5 x 10mm csk. screws at 110mm centres.



10mm x 6mm DRAINAGE SLOT TO UNDERSIDE OF SLIDING DOOR TRACK

NOTE:  
ENSURE THAT SLOTS TO UNDERSIDE OF CS47 ARE NOT POSITIONED UNDER WHEELS WHEN DOORS ARE IN A NATURAL CLOSED POSITION. SLOTS REQUIRED AT 1 Mtr. CENTRES WHERE TRACKS ABUT EACH OTHER SLOTS MUST BE ALIGNED FOR MAX. DRAINAGE.



AC020 straight sliding wheel secured using 2No.M8 x 30 bolts (FX019) into 2No.std.sq back plates (IN005)  
Max. wheel bearing load 250kgs i.e max door weight 500kgs.  
Extra door weight can be achieved using additional wheels Consult COMAR for applications.  
Wheels to be positioned to suit glass packing blocks.