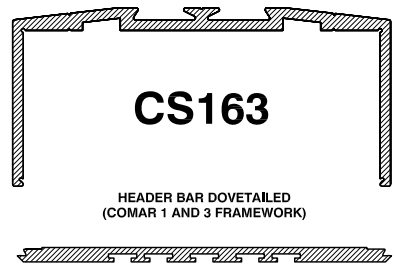


**CS13**

100mm x 45mm HEADER BAR

**CS162**

HEADER BAR  
(COMAR 2 FRAMEWORK)



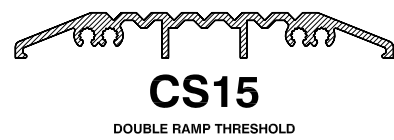
**CS163**

HEADER BAR DOVETAILED  
(COMAR 1 AND 3 FRAMEWORK)



**CS68**

HEADER BAR PLATE



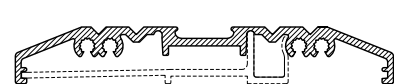
**CS15**

DOUBLE RAMP THRESHOLD



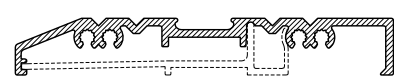
**CS45**

SINGLE RAMP THRESHOLD



**CS315**

DOUBLE RAMP DRAINED THRESHOLD



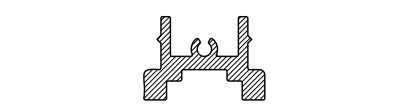
**CS345**

SINGLE RAMP DRAINED THRESHOLD



**CS346**

DRAINAGE TRAY



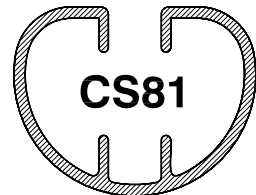
**CS786**

8mm SIDE WING CARRIER



**CS787**

3mm SIDE WING CARRIER



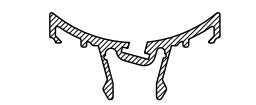
**CS81**

FINGER GUARD



**CS89**

NARROW FINGER GUARD STILE



**CS14**

FINGER GUARD INSERT



**CS90**

FINGER GUARD INSERT



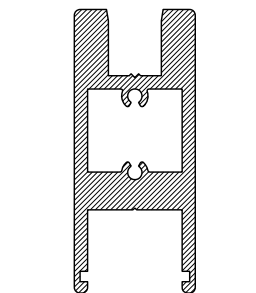
**CS84**

FILLER POCKET WOOLPILE



**CS87**

DRAUGHT STRIP



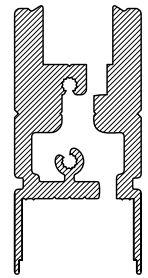
**CS80**

ARMOURED GLASS RAIL



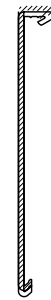
**CS82**

END CAP



**CS77 & CS78**

ARMOUR GLASS CLAMP RAIL  
(PART A AND PART B)



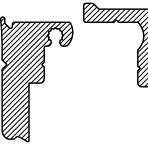
**CS79**

ARMOUR GLASS CLAMP  
RAIL COVER



**CS785**

A.G. RAIL WOOLPILE CARRIER



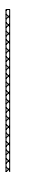
**CS777 & CS778**

ARMOUR GLASS SASH RAIL  
(PARTS A & B)



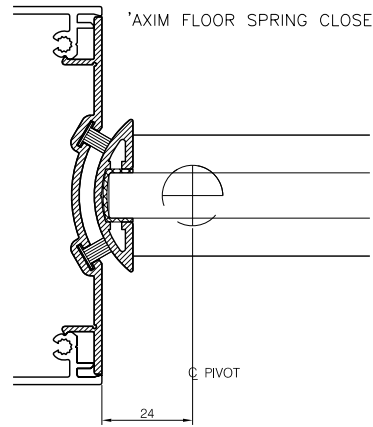
ARMOUR GLASS SASH RAIL COVER

**CS779**

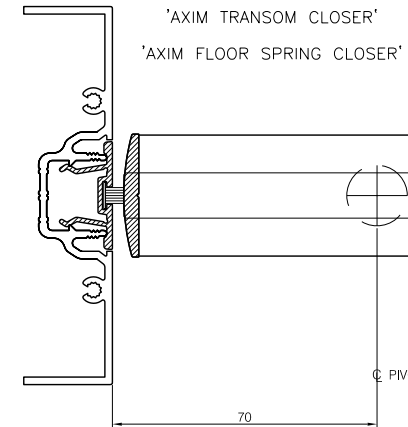


**GK91**

12mm GLAZING INSERT

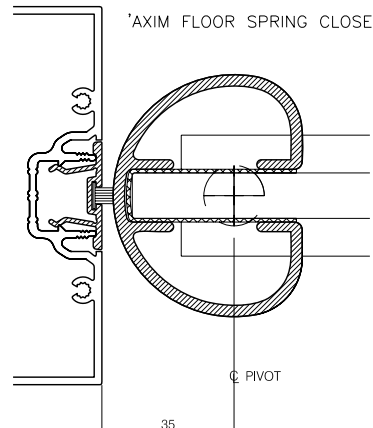


'AXIM FLOOR SPRING CLOSER'

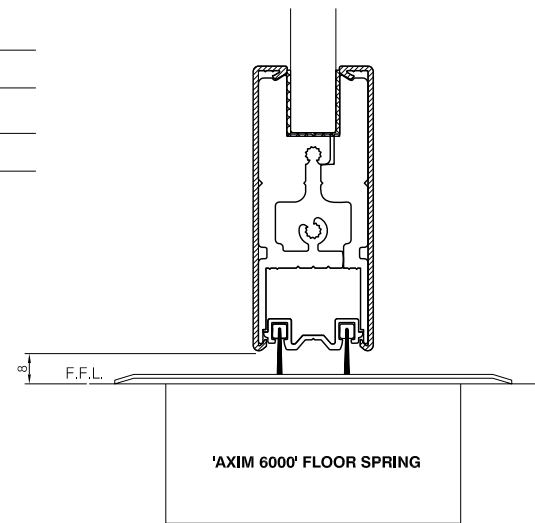


'AXIM TRANSOM CLOSER'

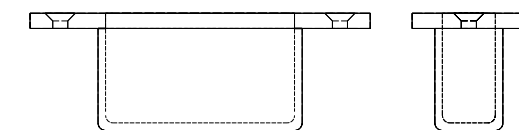
'AXIM FLOOR SPRING CLOSER'



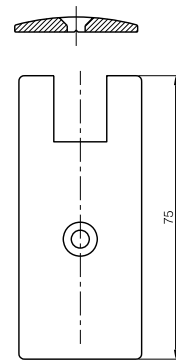
'AXIM FLOOR SPRING CLOSER'



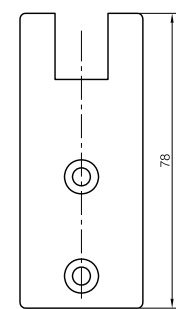
'AXIM 6000' FLOOR SPRING



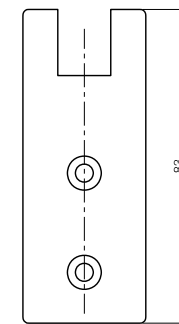
**LK201**



**AG 075**



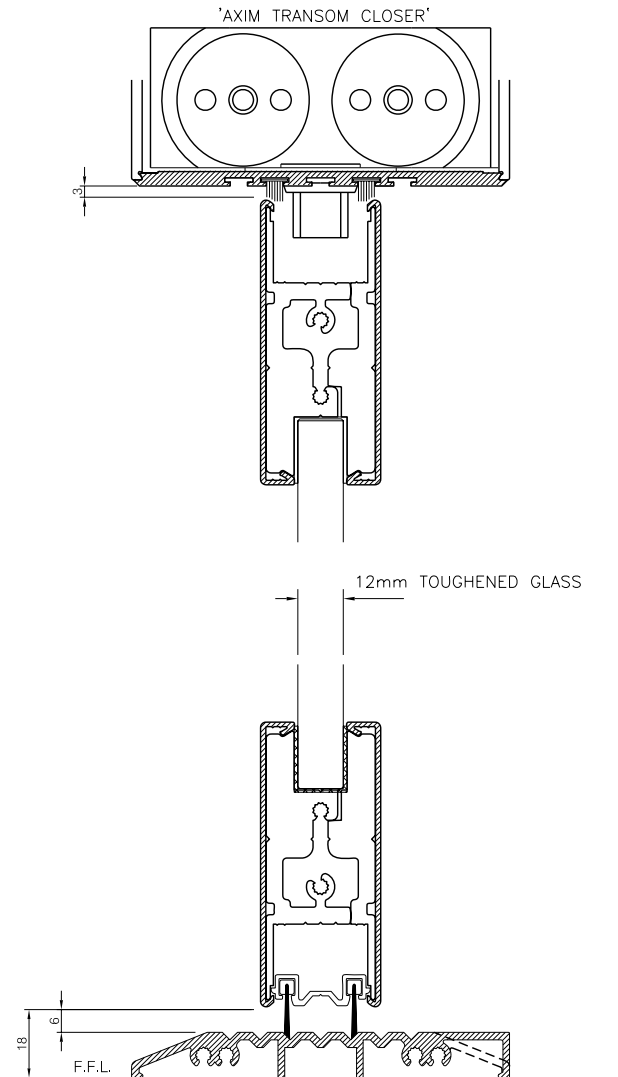
**AG 078**



**AG 083**

END CAPS AVAILABLE IN THE  
FOLLOWING FINISHES.

- MILL
- SILVER ANODISED
- BRONZE ANODISED
- SATIN STAINLESS STEEL
- POLISHED STAINLESS STEEL
- SATIN BRONZE
- POLISHED BRONZE



30mm BACKSET  
10mm EXTENSION (SPECIAL)  
30mm BACKSET DEADLOCK WITH  
10mm EXTENDED BOLT LK 200 BSVR