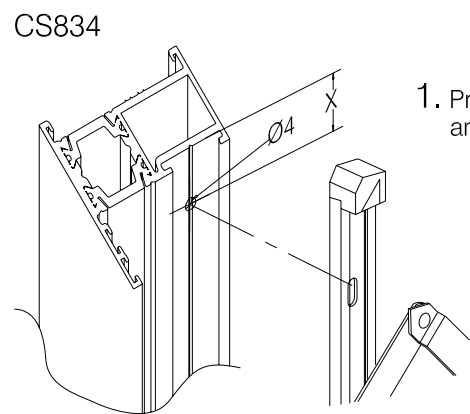
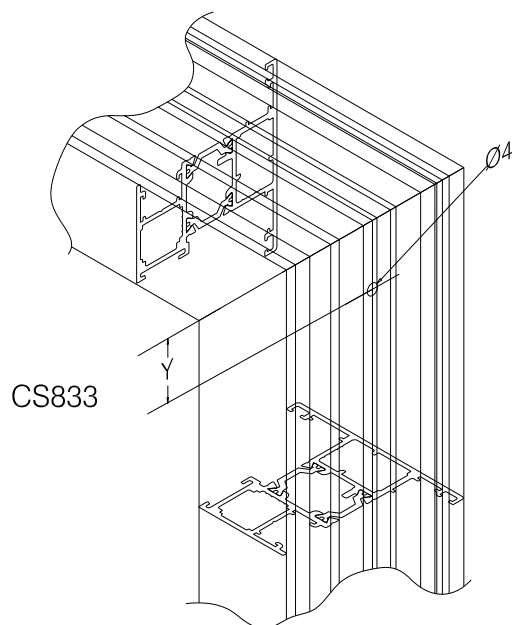


1. Preparation for Cockspur handle WS803/804 and 3mm wedge WS801.

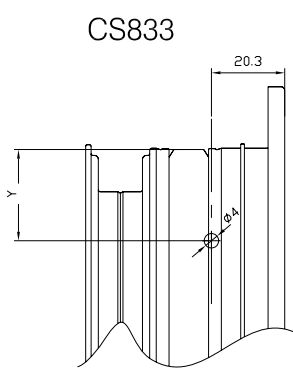


2. Datum for Cotswold hinge fixing to outer frame.

HINGE TYPE	VENT HOLE POSITION 'X'
12" SH R & NR	32.6*
516" SH NR	32.6*
16" SH R	36.2*
12" TH R	32.6*
16" - 24" TH R	36.2*
8" - 24" TH NR	36.2*
EASY CLEAN	20.8

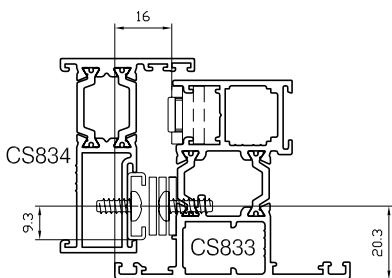


3. Datum for Cotswold hinge fixing to sash. Mark hole positions first, drill to centre of slots, fit hinge, adjust if required, then drill datum hole and fit screw to "lock" hinge position.

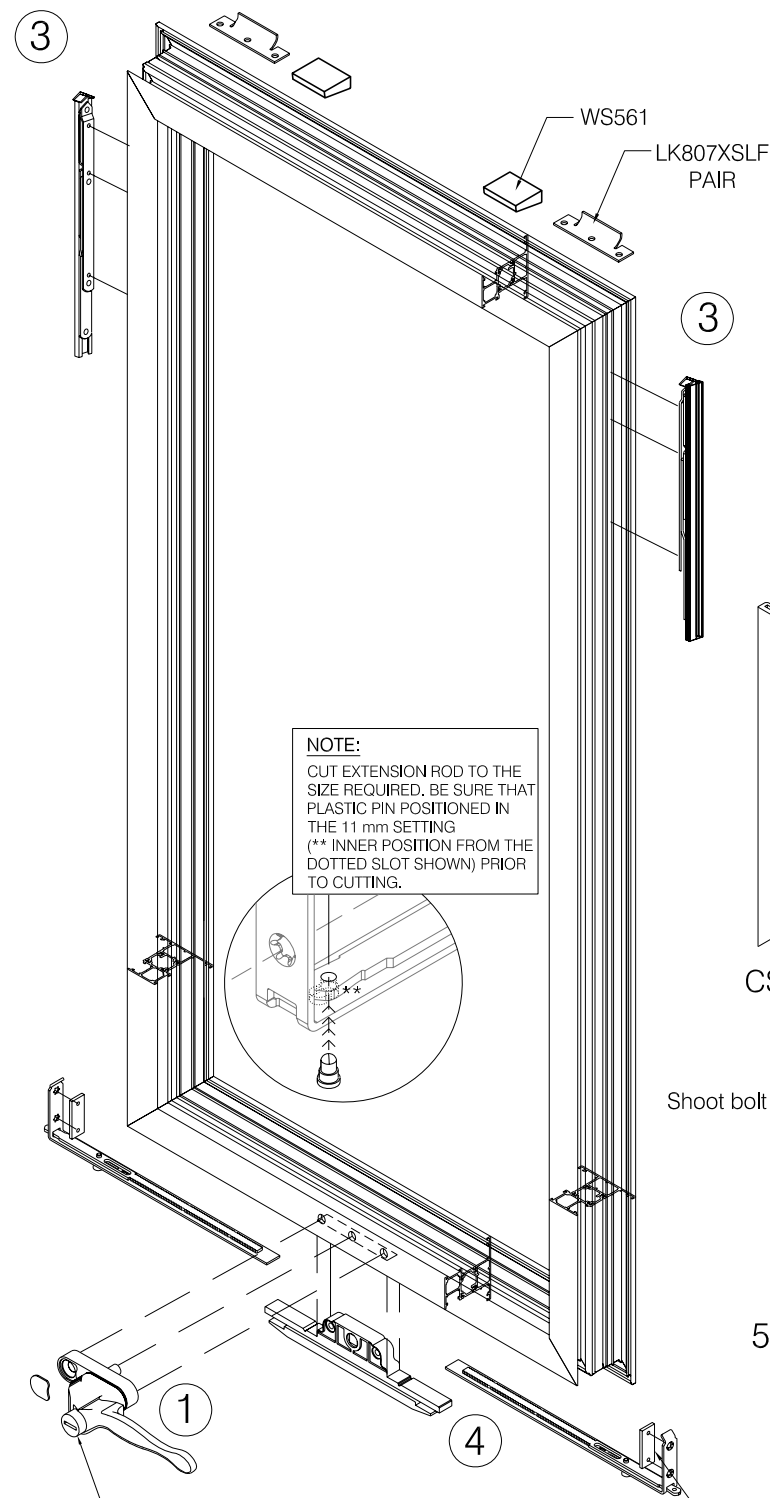
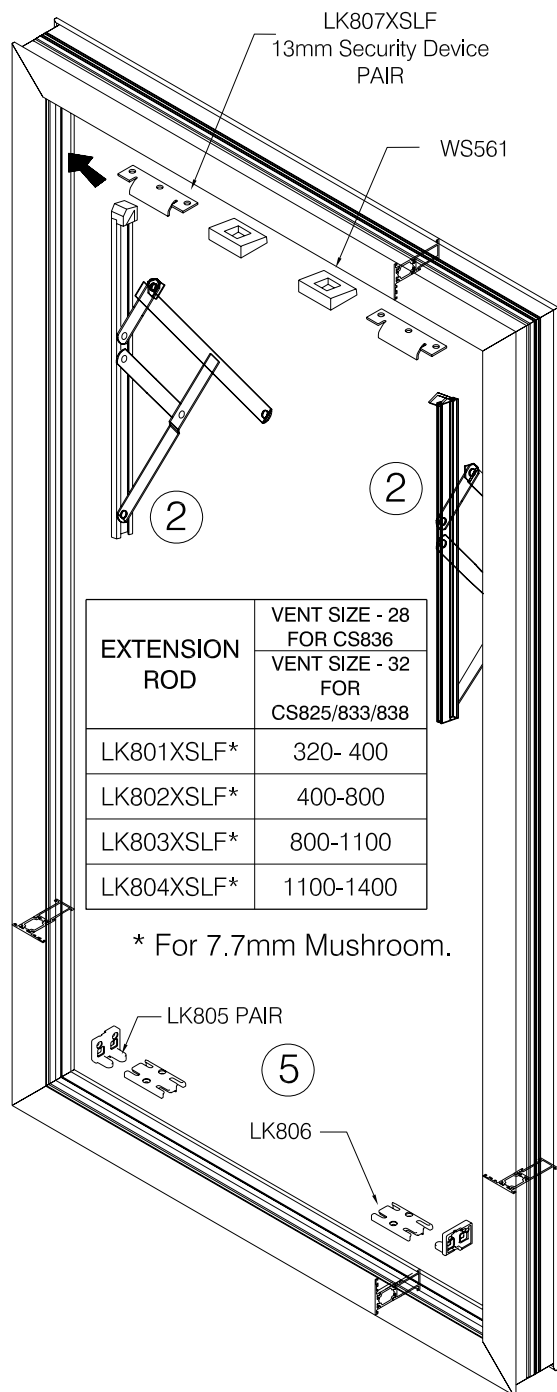


HINGE TYPE	OUTER FRAME HOLE POSITION 'Y'
ALL TYPES	15.5
HEAVY DUTY	36.5
EASY CLEAN	31.3

* Please see Page Ref.5.20 for the Jig3 Tooling Option.

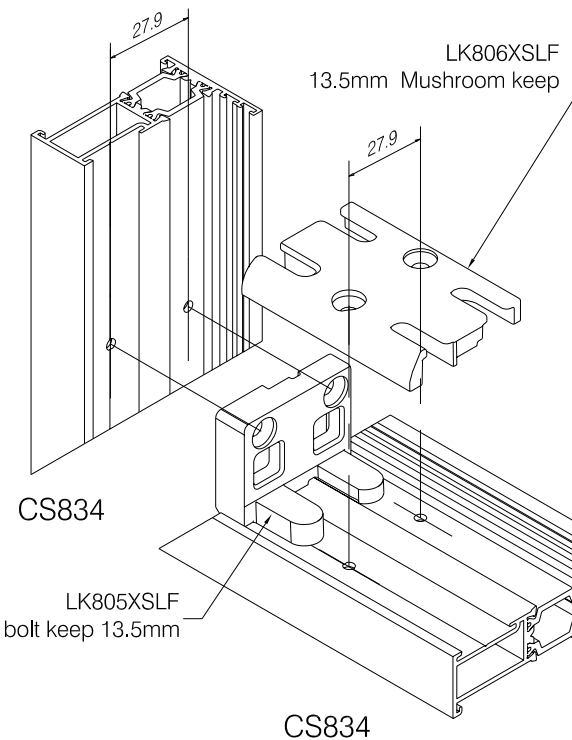


4. Preparation for Gearbox LK808XSLF Page Ref. 5.19.



Profiles	
Outer Frames Cut to	Work size
Sash size Mitre cut to	Work size - 30mm

Glass	
Sash Glass Cut to	Sash size - 108mm



5. Preparation for Mushroom Keep LK806XSLF and Shootbolt Keep LK805XSLF.

VENT SIZE - 28 FOR CS836	VENT SIZE - 32 FOR CS825/833/838	KEEPS REQUIRED
320-400		2 x LK805 + 2 x LK806
400-800		2 x LK805 + 4 x LK806
800-1100		2 x LK805 + 4 x LK806
1100-1400		2 x LK805 + 4 x LK806

NOTE:
As with all types of friction hinges, friction cannot be provided until the slider moves, therefore when limiting the opening of vents to angles of 10° or less, a separate device will be required to prevent the window from closing.